



NINGBO MFLAB MEDICAL INSTRUMENTS CO., LTD.

Add: NO. 508, Yingdong Road(N), Yinzhou Economic Development Zone,
315145 Ningbo China.
Tel: 0574-81877257 Fax: 0574-81877057
<http://www.mflab.com> www.foyomed.com www.seasight-med.com
E-mail: products@mflab.com

 Approved
**SCIENTIFIC
PRODUCTS**



Establishment & Featured Products

MFLAB is established in the year 2011. We are mainly focusing on the products including respiratory products, anesthetic medical products, laboratory products, etc.

Location

MFLAB locates in the eastern coast of China, Ningbo Port, also near Shanghai Port. Convenient for shipment.

Scope

Our MFLAB production area is covering 15,500 m2. Among it, it is including 100000 grade purification workshops and cleaning room, totally 9,200 m2. There are more than 250 workers in the production line.

Certification

We MFLAB have been passed by GMP, ISO13485, US FDA on-site Audit, Saudi Arabian FDA on-site Audit, Malaysian MOH on-site Audit, TUV CE 0197 certification of more than 40 products, and a number of patents.

Export Reputation

Our MFLAB products have been exported to over 100 countries worldwide through a network of distributors and subsidiaries, covering North American, South American, European, Asian and African countries.

Concept


We MFLAB devote to build a professional service team to respond to your inquiries, provide information accordingly and discuss your requirements.



Contents

Microscope Slides	01
Microscope Cover Glass	05
Microscope Slides Accessories	08
Slides Storage Box	09
Slides Staining Racks & Jar	10
Embedding Cassettes.....	11
Cuvette Cup Match for Cruor Apparatus.....	17
Sample Cups.....	19
Test Tubes.....	20
Test Tube Stoppers.....	24
Test Tube Racks.....	26
Centrifuge Tubes Racks.....	27
Centrifuge Tubes.....	28
Cryo-tubes.....	30
Freezing Boxes.....	30
Capillary.....	30
Pipette Tips.....	32
Tips Box.....	33
Transfer Pipettes.....	34
Serological Pipettes.....	36
Pasteur Pipettes.....	36
Microplates.....	38
Petri Dishes.....	40
Swab.....	40
Inoculation Loops.....	41
Cell Spreader.....	41
Number Reading Variable Volume Pipette.....	42
Pipette Pump.....	43
Pipette Reservoir.....	43
Pipette Stand.....	43
Container.....	44
Flip-Top Sample Vials.....	45
Histology Specimen Container.....	46
Measuring Cup.....	46
Plastic Beaker.....	46
Bottle Washer.....	46
Vacuum Blood Collection Tube.....	48
Blood Collection Needle	54
ESR Fast Detector.....	55
Glassware.....	57
Centrifuge.....	64
Laboratory Instruments.....	66
Microscope.....	81





MFLAB CAT.NO.7102

SIZE: 25.4X76.2mm
1-1.2mm THICK

MICROSCOPE SLIDES

72PCS CUT EDGES PLAIN 25.4 X 76.2mm(1X3) 1mm-1.2mm THICK

MICROSCOPE SLIDES

Non-interleaved
Dim.: 25.4mm x 76.2mm(1"x3")
Thickness: 1.0 - 1.2mm

Material Element: Glass
Storage Requirement:
Prevent Stress, Dampproof, Normaltemperature
Packing:
50pcs/box
50boxes/carton
36x18x16cm

MICROSCOPE SLIDES Pathology Grade

Code	Description	Corner		
MF99117101	Fine polished edges, plain	90°		
MF99117105	Fine polished edges, Frosted one end one side	90°		
MF99117107	Fine polished edges, Frosted one end both side	90°		
MF99147102	Cut edges, plain	90°		
MF99147105	Cut edges ,Frosted one end one side	90°		
MF99147107	Cut edges ,Frosted one end both side	90°		
MF99127101	Fine polished edges, plain	45°		
MF99127105	Fine polished edges, Frosted one end one side	45°		
MF99127107	Fine polished edges, Frosted one end both side	45°		
MF99137101	Beveled edges, plain	45°		
MF99137105	Beveled edges, frosted one end one side	45°		
MF99137107	Beveled edges, frosted one end both sides	45°		
MF99127103	Single cavity, fine polished edges	45°		
MF99127104	Double cavity, fine polished edges	45°		

Pathology Grade
Non-interleaved
Dim.: 25.4mm x 76.2mm(1" x 3")
Thickness: 1.0 - 1.2mm



MFLAB CAT.NO.7109

SIZE: 25.4X76.2mm
1-1.2mm THICK

MICROSCOPE SLIDES

72PCS CUT EDGES PLAIN 25.4 X 76.2mm(1X3) 1mm-1.2mm THICK

MICROSCOPE SLIDES

MICROSCOPE SLIDES Color Frosted

Fine Polished Edges, 90° Corners

Code	Description	Corner		
MF99118105W	White Color, Frosted one end one side	90°		
MF99118105O	Orange Color, Frosted one end one side	90°		
MF99118105Y	Yellow Color, Frosted one end one side	90°		
MF99118105G	Green Color, Frosted one end one side	90°		
MF99118105P	Pink Color, Frosted one end one side	90°		
MF99118105B	Blue Color, Frosted one end one side	90°		

Fine Polished Edges, 45° Corners

Code	Description	Corner		
MF99128105W	White Color, Frosted one end one side	45°		
MF99128105O	Orange Color, Frosted one end one side	45°		
MF99128105Y	Yellow Color, Frosted one end one side	45°		
MF99128105G	Green Color, Frosted one end one side	45°		
MF99128105P	Pink Color, Frosted one end one side	45°		
MF99128105B	Blue Color, Frosted one end one side	45°		

Pathology Grade
Non-interleaved
Dim.: 25.4mm x 76.2mm(1" x 3")
Thickness: 1.0 - 1.2mm

MICROSCOPE SLIDES
Color Frosted

CE

Beveled Edges

Code	Description	Corner
MF99138105W	White Color, Frosted one end one side	45°
MF99138105O	Orange Color, Frosted one end one side	45°
MF99138105Y	Yellow Color, Frosted one end one side	45°
MF99138105G	Green Color, Frosted one end one side	45°
MF99138105P	Pink Color, Frosted one end one side	45°
MF99138105B	Blue Color, Frosted one end one side	45°

Cut Edges

Code	Description	Corner
MF99148105W	White Color, Frosted one end one side	90°
MF99148105O	Orange Color, Frosted one end one side	90°
MF99148105Y	Yellow Color, Frosted one end one side	90°
MF99148105G	Green Color, Frosted one end one side	90°
MF99148105P	Pink Color, Frosted one end one side	90°
MF99148105B	Blue Color, Frosted one end one side	90°

MICROSCOPE SLIDES Standard Grade

Interleaved
Dim.: 25.4mm x 76.2mm(1"x3")
Thickness: 1.0 - 1.2mm



Code	Description	Corner
MF99247102	Cut edges, plain	90°
MF99247105	Cut edges, Frosted one end one side	90°
MF99247107	Cut edges, Frosted one end one side	90°
MF99217101	Fine polished edges, plain	90°
MF99217105	Fine polished edges, Frosted one end one side	90°
MF99217107	Fine polished edges, Frosted one end both side	90°
MF99227101	Fine polished edges, plain	45°
MF99227105	Fine polished edges, Frosted one end one side	45°
MF99227107	Fine polished edges, Frosted one end both side	45°

MICROSCOPE SLIDES
Economy Grade

Interleaved Ground Edges
Dim.: 25.4mm x 76.2mm(1"x3")
Thickness: 1.0 - 1.2mm

CE

Code	Description	Corner
MF99327101	Rough ground edges, plain	45°
MF99317102	Cut edges, plain	90°
MF99327105	Rough ground edges, Frosted one end one side	45°
MF99347105	Cut edges, Frosted one end one side	90°
MF99327107	Rough ground edges, Frosted one end both side	45°
MF99317107	Cut edges, Frosted one end both side	90°



MICROSCOPE COVER GLASS Standard Grade

Microscope Cover Glass
Microscope Cover Glass, Standard Grade,
Individual Vacuum Pack
In Aluminum foil Cover glass packed
In Vacuum and Dry Conditions
Before Using

Storage Requirement:
Prevent Stress, Dampproof,
Normal Temperature
Packing: Individual Wrapped,
In Vacuum Aluminum Foil
Out Carton: 51 x 23 x 29cm

Thickness Available
Nr. 1 0.13-0.16mm
Nr. 1.5 0.16-0.19mm
Nr. 2 0.19-0.23mm
Special Dimensions available Upon request



Code	Dim.	Packing
MF98111818	18x18	200pcs/vacuum pack, 2000pcs/inner box, 40000pcs/ctn
MF98112020	20x20	200pcs/vacuum pack, 2000pcs/inner box, 40000pcs/ctn
MF98112222	22x22	200pcs/vacuum pack, 2000pcs/inner box, 40000pcs/ctn
MF98112424	24x24	200pcs/vacuum pack, 2000pcs/inner box, 40000pcs/ctn
MF98112232	22x32	100pcs/vacuum pack, 1000pcs/inner box, 20000pcs/ctn
MF98112432	24x32	100pcs/vacuum pack, 1000pcs/inner box, 20000pcs/ctn
MF98112240	22x40	100pcs/vacuum pack, 1000pcs/inner box, 20000pcs/ctn
MF98112440	24x40	100pcs/vacuum pack, 1000pcs/inner box, 20000pcs/ctn
MF98112250	22x50	100pcs/vacuum pack, 1000pcs/inner box, 20000pcs/ctn
MF98112450	24x50	100pcs/vacuum pack, 1000pcs/inner box, 20000pcs/ctn
MF98112260	22x60	100pcs/vacuum pack, 1000pcs/inner box, 20000pcs/ctn
MF98112460	24x60	100pcs/vacuum pack, 1000pcs/inner box, 20000pcs/ctn

HEMACYTOMETER COVER GLASS CE

Thickness: 0.4mm
Packing: 10pcs/pack, 10packs/inner box, 100packs/ctn

Code	Dim.	Description
MF99312026	20X26mm	90° Corners, Polished Edges
MF99322222	22X22mm	45° Corners, Polished Edges
MF99332424	24X24mm	45° Corners, Polished Edges
MF99342026	20X26mm	90° Corners, Cut Edges
MF99352026	20x26mm	45° Corners, Cut Edges

MICROSCOPE COVER GLASS Economy Grade



Thickness Available
Nr. 1 0.13-0.16mm
Nr. 1.5 0.16-0.19mm
Nr. 2 0.19-0.23mm
Special Dimensions available Upon request

Code	Dim.	Packing
MF98211818	18x18	100pcs/box, 1000pcs/vacuum pack, 50000pcs/ctn
MF98212020	20x20	100pcs/box, 1000pcs/vacuum pack, 50000pcs/ctn
MF98212222	22x22	100pcs/box, 1000pcs/vacuum pack, 50000pcs/ctn
MF98212424	24x24	100pcs/box, 1000pcs/vacuum pack, 50000pcs/ctn
MF98212232	22x32	100pcs/box, 1000pcs/vacuum pack, 50000pcs/ctn
MF98212432	24x32	100pcs/box, 1000pcs/vacuum pack, 50000pcs/ctn
MF98212240	22x40	100pcs/box, 1000pcs/vacuum pack, 40000pcs/ctn
MF98212440	24x40	100pcs/box, 1000pcs/vacuum pack, 40000pcs/ctn
MF98212250	22x50	100pcs/box, 1000pcs/vacuum pack, 30000pcs/ctn
MF98212450	24x50	100pcs/box, 1000pcs/vacuum pack, 30000pcs/ctn
MF98212260	22x60	100pcs/box, 1000pcs/vacuum pack, 30000pcs/ctn
MF98212460	24x60	100pcs/box, 1000pcs/vacuum pack, 30000pcs/ctn

Slips-circular

Code	Dim.	Packing
MF98210008	Φ8mm	100pcs/box, 1000pcs/vacuum pack, 50000pcs/ctn
MF98210010	Φ10mm	100pcs/box, 1000pcs/vacuum pack, 50000pcs/ctn
MF98210011	Φ11mm	100pcs/box, 1000pcs/vacuum pack, 50000pcs/ctn
MF98210012	Φ12mm	100pcs/box, 1000pcs/vacuum pack, 50000pcs/ctn
MF98210013	Φ13mm	100pcs/box, 1000pcs/vacuum pack, 50000pcs/ctn
MF98210014	Φ14mm	100pcs/box, 1000pcs/vacuum pack, 50000pcs/ctn
MF98210015	Φ15mm	100pcs/box, 1000pcs/vacuum pack, 40000pcs/ctn
MF98210016	Φ16mm	100pcs/box, 1000pcs/vacuum pack, 40000pcs/ctn
MF98210018	Φ18mm	100pcs/box, 1000pcs/vacuum pack, 30000pcs/ctn
MF98210020	Φ20mm	100pcs/box, 1000pcs/vacuum pack, 30000pcs/ctn
MF98210022	Φ22mm	100pcs/box, 1000pcs/vacuum pack, 30000pcs/ctn
MF98210024	Φ24mm	100pcs/box, 1000pcs/vacuum pack, 30000pcs/ctn
MF98210025	Φ25mm	100pcs/box, 1000pcs/vacuum pack, 30000pcs/ctn

HEMOCYTOMETER SET

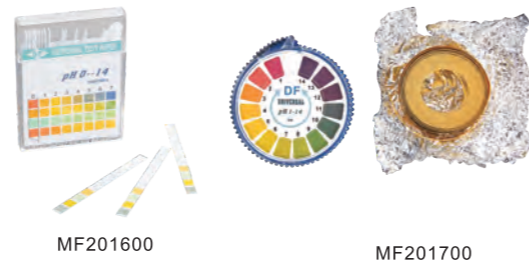
MF920202N
Counting Chamber(Neubauer, 2 chambers)----1pc
Erythrocyte Pipette ----- 1pc
Leucocyte Pipette ----- 1pc
Blood Cover Slip -----2pcs

Counting Chamber
MF920002N/MF920004N Improved Neubauer,
2 Chambers/4 Chambers
MF920002T/mf920004T Thoma,
2 Chambers/4 Chambers
MF920002F/MF820004F Fuchs-Rosenthal,
2 Chambers/4 Chambers
Packing: 10pcs/box, 400pcs/ctn,
39x35x43cm

Blood Pipettes For Corpuseles
MF920100R Erythrocyte Pipette
MF920100W Leucocyte Pipette
Packing: 10pcs/box, 400pcs/ctn,
39x35x43cm

Universal Test Paper

MF201600 0.6cmx8cm, Palette: 0.6 x0.6cm, 0 - 14 universal type, 100strips/box
MF201700 0.8cmx5cm, With plastic cutter, 1 - 14 universal type, 1pc/box
Note: Soak test strip in the test solution for a halfsecond and compare it with the standard color, the results obtained.

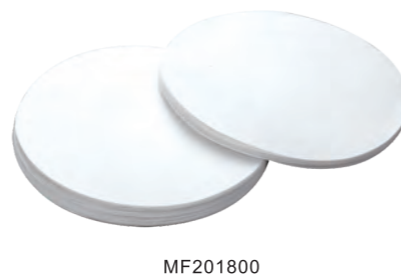


Filter Paper

MF201800
Filter paper is a good filtration performance of paper, it have a strong absorption for liquid. In analytical laboratory, filter paper used as a filter medium, and made the solution and solid separation.

1, Qualitative filter paper/with the number 1 marked
The quality filter papers is only for general qualitative analysis and for sediment filtration or float filtration in solution but not for quality analysis.

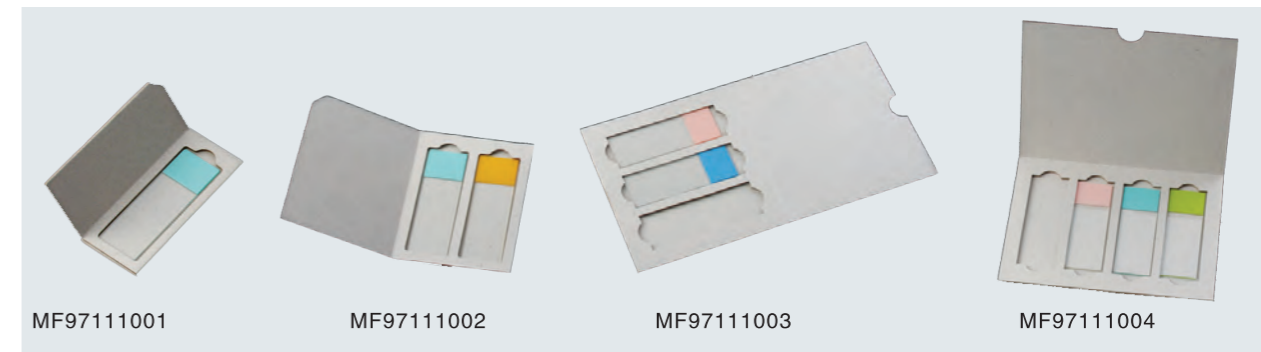
2, Quantitative filter paper/with the number 2 marked
The quantitative filter paper are used or precisely calculating the numerical value filtration, like determination of residue, undissolved substance and so on. Generally speaking, processing in the high temperature furnace is needed after filtration by quantitative filter papers.



Filtration Rate

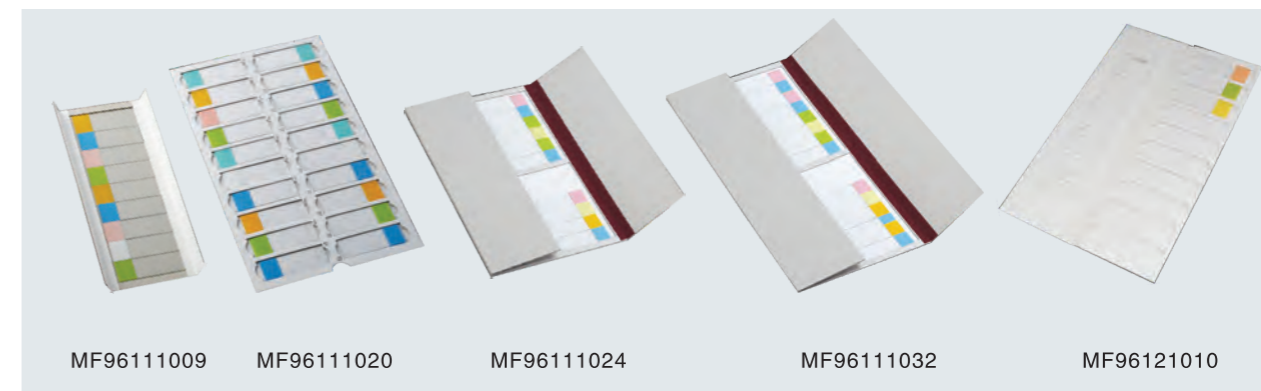
Rapid filter paper: ≤35S, with the number 01 marked
Medium-Speed filter paper ≤70S, with the number 02 marked
Slow-Speed filter paper ≤ 140S, with the number 03 marked
Size: Circular shape 7cm, 9cm, 10cm, 11cm, 12.5cm, 15cm, 18cm
Packing: 100pcs/box, 100boxes/ctn
For example: 201 that is rapid quantitative filter paper

MICROSCOPE SLIDE ACCESSORIES



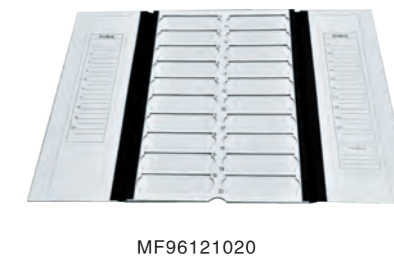
Cardboard Mailers for Microscope Slides
With lid and dividers
Suitable for 25 x 75mm slides

MF97111001 Slides mailer for 1 piece slide, 50pcs/inner box, 100pca/carton
MF97111002 Slides mailer for 2 piece slide, 50pcs/inner box, 100pca/carton
MF97111003 Slides mailer for 3 piece slide, 50pcs/inner box, 100pca/carton
MF97111004 Slides mailer for 4 piece slide, 50pcs/inner box, 100pca/carton



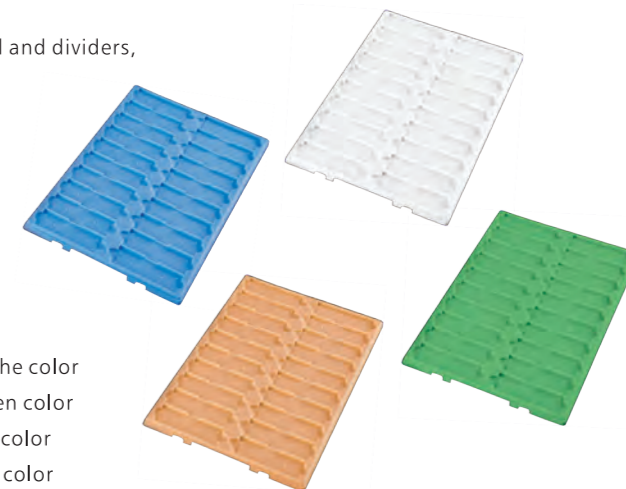
Cardboard Trays and Wallets Microscope Slides 25 x75mm

MF96111009 Slides Tray and wallet for 9 piece slide,
10pcs/inner box, 250pcs/carton
MF96111020 Slides Tray and wallet for 20 piece slide, with Dividers,
10pcs/inner box, 100pcs/carton
MF96111024 Slides Tray and wallet for 24 piece slide, with lid,
5pcs/inner box, 50pcs/carton
MF96111032 Slides Tray and wallet for 32 piece slide, with lid,
5pcs/inner box, 50pcs/carton
MF96121010 Slides Tray and wallet for 10 piece slide, with lid and dividers,
5pcs/inner box, 50pcs/carton
MF96121020 Slides Tray and wallet for 20 piece slide, with lid and dividers,
5pcs/inner box, 50pcs/carton



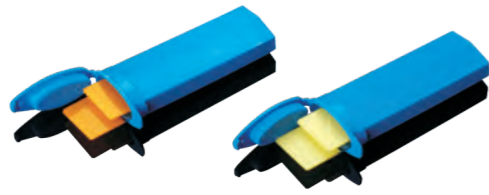
Plastic Slide Trays
Suitable for 25 x 75mm Slides

MF96211020W Slides tray for 20 piece slide, PS material, Withe color
MF96211020G Slides tray for 20 piece slide, PS material, Green color
MF96211020P Slides tray for 20 piece slide, PS material, Pink color
MF96211020B Slides tray for 20 piece slide, PS material, Blue color





MICROSCOPE SLIDE ACCESSORIES CE



MF97231002

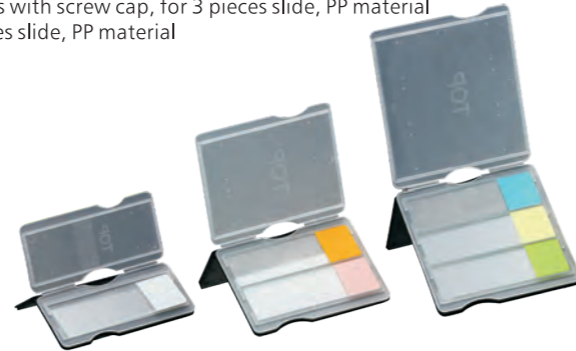
Plastic Mailers For Microscope Slides

MF97211001 Slides mailer for 1 piece slide, PP material
 MF97211002 Slides mailer for 2 piece slide, PP material
 MF97211003 Slides mailer for 3 piece slide, PP material
 MF97231002 Slides mailer for 2 piece slide, Vertical, PP material, Blue/Neutral
 MF97221003 Slides mailer containers with screw cap, for 3 pieces slide, PP material
 MF97241005 Slides mailer for 5 pieces slide, PP material

MF97241005



MF97221003



MF97211001

MF97211002

MF97211003

SLIDES STORAGE BOX

Slides Storage Boxes

Material: ABS

More Colors Available Upon Request



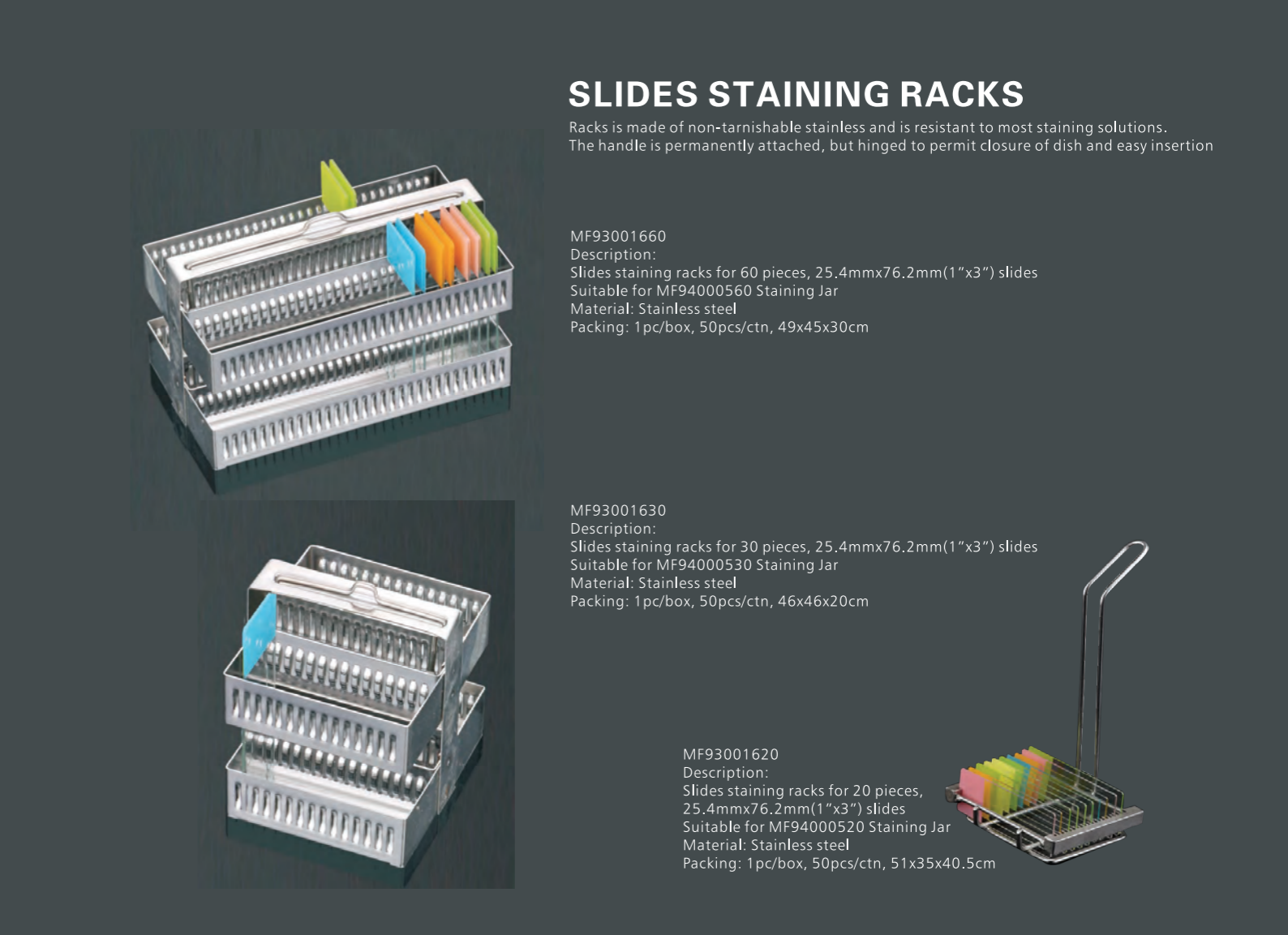
MF95002012G Grey Color
 MF95002012M Metallic Grey Color
 MF95002012O Orange Color
 Slides storage boxes for 12 pieces, 25.4mm x 76.2mm (1"x3")slides, Packing: 240pcs/ctn, 43.5x25.5x33.5cm

MF95002025G Grey Color
 MF95002025M Metallic Grey Color
 MF95002025O Orange Color
 MF95002025W Ivory-White
 Slides storage boxes for 25 pieces, 25.4mm x 76.2mm (1"x3")slides, Packing: 120pcs/ctn, 52x21x33.5cm



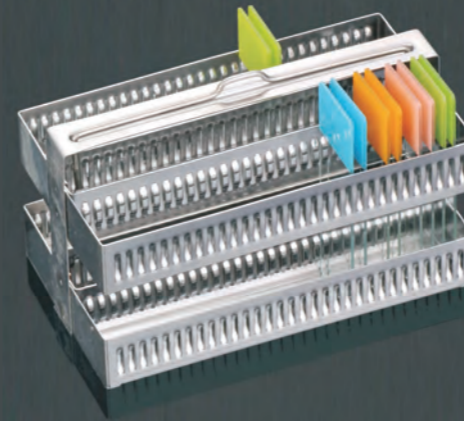
MF95002100G Grey Color
 MF95002100M Metallic Grey Color
 MF95002100O Orange Color
 MF95002100W Ivory-White
 Slides storage boxes for 100 pieces, 25.4mm x 76.2mm (1"x3")slides, Packing: 50pcs/ctn, 86.5x21x35cm

MF95002050G Grey Color
 MF95002050M Metallic Grey Color
 MF95002050O Orange Color
 MF95002050W Ivory-White
 Slides storage boxes for 50 pieces, 25.4mm x 76.2mm (1"x3")slides, Packing: 120pcs/ctn, 56x41x34cm



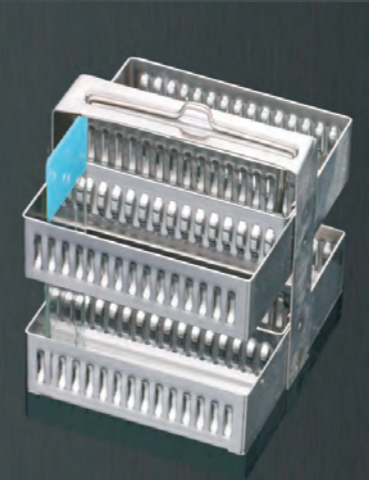
SLIDES STAINING RACKS

Racks is made of non-tarnishable stainless and is resistant to most staining solutions. The handle is permanently attached, but hinged to permit closure of dish and easy insertion



MF93001660

Description: Slides staining racks for 60 pieces, 25.4mmx76.2mm(1"x3") slides
 Suitable for MF94000560 Staining Jar
 Material: Stainless steel
 Packing: 1pc/box, 50pcs/ctn, 49x45x30cm



MF93001630

Description: Slides staining racks for 30 pieces, 25.4mmx76.2mm(1"x3") slides
 Suitable for MF94000530 Staining Jar
 Material: Stainless steel
 Packing: 1pc/box, 50pcs/ctn, 46x46x20cm

MF93001620

Description: Slides staining racks for 20 pieces, 25.4mmx76.2mm(1"x3") slides
 Suitable for MF94000520 Staining Jar
 Material: Stainless steel
 Packing: 1pc/box, 50pcs/ctn, 51x35x40.5cm



SLIDES STAINING JAR, GLASS



MF94000505 Slides staining jar for 5 piece, 25.4 mm x 76.2mm(1"x3")slides, coplin type
 Packing: 1pc/box, 20pcs/ctn, 37x30x14.5cm



MF94000609 Slides staining jar for 9 piece, 25.4 mm x 76.2mm(1"x3")slides, Hellendhal type
 Packing: 1pc/box, 20pcs/ctn, 37.5x16.5x24.5cm



MF94000520 Slides staining jar for 20 piece, 25.4 mm x 76.2mm(1"x3")slides, Papanicolaou type
 Packing: 1pc/box, 20pcs/ctn, 55x27x23.5cm



MF94000560 Slides staining jar for 60 piece, 25.4 mm x 76.2mm(1"x3")slides, with ground-in glass lid amber color available, suitable for MF93001660 Rack, Racks not included
 Packing: 1pc/box, 10pcs/ctn, 56.5x19.5x26cm



MF94000530 Slides staining jar for 30 piece, 25.4 mm x 76.2mm(1"x3")slides, with ground-in glass lid amber color available, suitable for MF93001630 Rack, Racks not included
 Packing: 1pc/box, 20pcs/ctn, 54x24.5x24cm

MF94000510 Slides staining jar for 10 piece, 25.4 mm x 76.2mm(1"x3")slides, schifferdecker type
 Packing: 1pc/box, 20pcs/ctn, 43.5x23x35cm

EMBEDDING CASSETTES

Suitable for most Automatic Embedding Cassette labeling instruments

CODE	COLOR	MATERIAL
MF69010101W	○ White	Polyoxymethylene (P.O.M.)
MF69010101Y	● Yellow	Polyoxymethylene (P.O.M.)
MF69010101G	● Green	Polyoxymethylene (P.O.M.)
MF69010101P	● Pink	Polyoxymethylene (P.O.M.)
MF69010101B	● Blue	Polyoxymethylene (P.O.M.)
MF69010101T	● Tan	Polyoxymethylene (P.O.M.)
MF69010101M	● Purple	Polyoxymethylene (P.O.M.)
MF69010101N	● Peach	Polyoxymethylene (P.O.M.)
MF69010101O	● Orange	Polyoxymethylene (P.O.M.)
MF69010101A	● Aqua	Polyoxymethylene (P.O.M.)

Biopsy-Square holes with removable lid,

P.O.M. Material

Packing: 250pcs/dispenser box, 8x250pcs/carton



CODE	COLOR	MATERIAL
MF69010102W	○ White	Polyoxymethylene (P.O.M.)
MF69010102Y	● Yellow	Polyoxymethylene (P.O.M.)
MF69010102G	● Green	Polyoxymethylene (P.O.M.)
MF69010102P	● Pink	Polyoxymethylene (P.O.M.)
MF69010102B	● Blue	Polyoxymethylene (P.O.M.)
MF69010102T	● Tan	Polyoxymethylene (P.O.M.)
MF69010102M	● Purple	Polyoxymethylene (P.O.M.)
MF69010102N	● Peach	Polyoxymethylene (P.O.M.)
MF69010102O	● Orange	Polyoxymethylene (P.O.M.)
MF69010102A	● Aqua	Polyoxymethylene (P.O.M.)

Histology-Strip Holes with Removable Lid,

P.O.M. Material

Packing: 250pcs/dispenser box, 8x250pcs/carton

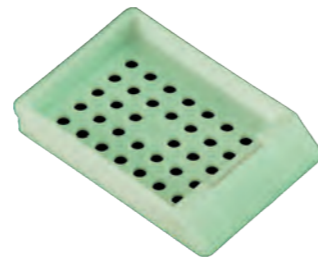


CODE	COLOR	MATERIAL
MF69020103W	○ White	Polyoxymethylene (P.O.M.)
MF69020103Y	● Yellow	Polyoxymethylene (P.O.M.)
MF69020103G	● Green	Polyoxymethylene (P.O.M.)
MF69020103P	● Pink	Polyoxymethylene (P.O.M.)
MF69020103B	● Blue	Polyoxymethylene (P.O.M.)
MF69020103T	● Tan	Polyoxymethylene (P.O.M.)
MF69020103M	● Purple	Polyoxymethylene (P.O.M.)
MF69020103N	● Peach	Polyoxymethylene (P.O.M.)
MF69020103O	● Orange	Polyoxymethylene (P.O.M.)
MF69020103A	● Aqua	Polyoxymethylene (P.O.M.)

Standard-Round Holes without Lid

P.O.M. Material

Packing: 500pcs/dispenser box, 8x500pcs/carton



EMBEDDING CASSETTES

Suitable for most Automatic Embedding Cassette labeling instruments

CODE	COLOR	MATERIAL
MF69010104W	○ White	Polyoxymethylene (P.O.M.)
MF69010104Y	● Yellow	Polyoxymethylene (P.O.M.)
MF69010104G	● Green	Polyoxymethylene (P.O.M.)
MF69010104P	● Pink	Polyoxymethylene (P.O.M.)
MF69010104B	● Blue	Polyoxymethylene (P.O.M.)
MF69010104T	● Tan	Polyoxymethylene (P.O.M.)
MF69010104M	● Purple	Polyoxymethylene (P.O.M.)
MF69010104N	● Peach	Polyoxymethylene (P.O.M.)
MF69010104O	● Orange	Polyoxymethylene (P.O.M.)
MF69010104A	● Aqua	Polyoxymethylene (P.O.M.)

Biopsy-Fine Square Holes with Removable Lid

P.O.M. Material

Packing: 250pcs/dispenser box, 8x250pcs/carton



CODE	COLOR	MATERIAL
MF6903(04)0105W	○ White	Polyoxymethylene (P.O.M.)
MF6903(04)0105Y	● Yellow	Polyoxymethylene (P.O.M.)
MF6903(04)0105G	● Green	Polyoxymethylene (P.O.M.)
MF6903(04)0105P	● Pink	Polyoxymethylene (P.O.M.)
MF6903(04)0105B	● Blue	Polyoxymethylene (P.O.M.)
MF6903(04)0105T	● Tan	Polyoxymethylene (P.O.M.)
MF6903(04)0105M	● Purple	Polyoxymethylene (P.O.M.)
MF6903(04)0105N	● Peach	Polyoxymethylene (P.O.M.)
MF6903(04)0105O	● Orange	Polyoxymethylene (P.O.M.)
MF6903(04)0105A	● Aqua	Polyoxymethylene (P.O.M.)

Biopsy-Fine Square Holes with Detachable/Hinged Lid

P.O.M. Material

Packing:

MF6903: Cassettes & Lids separately packed, 4x500 cassettes + 2x1000 lids/carton

MF6904: Assembled cassettes and lids, 375pcs/dispenser box, 8x375pcs/carton



CODE	COLOR	MATERIAL
MF6903(04)0106W	○ White	Polyoxymethylene (P.O.M.)
MF6903(04)0106Y	● Yellow	Polyoxymethylene (P.O.M.)
MF6903(04)0106G	● Green	Polyoxymethylene (P.O.M.)
MF6903(04)0106P	● Pink	Polyoxymethylene (P.O.M.)
MF6903(04)0106B	● Blue	Polyoxymethylene (P.O.M.)
MF6903(04)0106T	● Tan	Polyoxymethylene (P.O.M.)
MF6903(04)0106M	● Purple	Polyoxymethylene (P.O.M.)
MF6903(04)0106N	● Peach	Polyoxymethylene (P.O.M.)
MF6903(04)0106O	● Orange	Polyoxymethylene (P.O.M.)
MF6903(04)0106A	● Aqua	Polyoxymethylene (P.O.M.)

Histology-Strip Holes with Detachable/Hinged Lid

P.O.M. Material

Packing:

MF6903: Cassettes & Lids separately packed, 4x500 cassettes + 2x1000 lids/carton

MF6904: Assembled cassettes and lids, 375pcs/dispenser box, 8x375pcs/carton



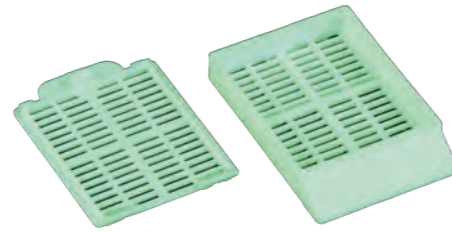


EMBEDDING CASSETTES

Suitable for most Automatic Embedding Cassette labeling instruments

CODE	COLOR	MATERIAL
MF6903(04)0107W	○ White	Polyoxymethylene (P.O.M.)
MF6903(04)0107Y	● Yellow	Polyoxymethylene (P.O.M.)
MF6903(04)0107G	● Green	Polyoxymethylene (P.O.M.)
MF6903(04)0107P	● Pink	Polyoxymethylene (P.O.M.)
MF6903(04)0107B	● Blue	Polyoxymethylene (P.O.M.)
MF6903(04)0107T	● Tan	Polyoxymethylene (P.O.M.)
MF6903(04)0107M	● Purple	Polyoxymethylene (P.O.M.)
MF6903(04)0107N	● Peach	Polyoxymethylene (P.O.M.)
MF6903(04)0107O	● Orange	Polyoxymethylene (P.O.M.)
MF6903(04)0107A	● Aqua	Polyoxymethylene (P.O.M.)

Histology-Strip Holes with Detachable/Hinged Lid
P.O.M. Material
Packing:
MF6903: Cassettes & Lids separately packed, 4x500 cassettes + 2x1000 lids/carton
MF6904: Assembled cassettes and lids, 375pcs/dispenser box, 8x375pcs/carton



CODE	COLOR	MATERIAL
MF69020108W	○ White	Polyoxymethylene (P.O.M.)
MF69020108Y	● Yellow	Polyoxymethylene (P.O.M.)
MF69020108G	● Green	Polyoxymethylene (P.O.M.)
MF69020108P	● Pink	Polyoxymethylene (P.O.M.)
MF69020108B	● Blue	Polyoxymethylene (P.O.M.)
MF69020108T	● Tan	Polyoxymethylene (P.O.M.)
MF69020108M	● Purple	Polyoxymethylene (P.O.M.)
MF69020108N	● Peach	Polyoxymethylene (P.O.M.)
MF69020108O	● Orange	Polyoxymethylene (P.O.M.)
MF69020108A	● Aqua	Polyoxymethylene (P.O.M.)

Standard-Round Holes without Lid
P.O.M. Material
Packing: 500pcs/dispenser box, 8x500pcs/carton



CODE	COLOR	MATERIAL
MF69020109W	○ White	Polyoxymethylene (P.O.M.)
MF69020109Y	● Yellow	Polyoxymethylene (P.O.M.)
MF69020109G	● Green	Polyoxymethylene (P.O.M.)
MF69020109P	● Pink	Polyoxymethylene (P.O.M.)
MF69020109B	● Blue	Polyoxymethylene (P.O.M.)
MF69020109T	● Tan	Polyoxymethylene (P.O.M.)
MF69020109M	● Purple	Polyoxymethylene (P.O.M.)
MF69020109N	● Peach	Polyoxymethylene (P.O.M.)
MF69020109O	● Orange	Polyoxymethylene (P.O.M.)
MF69020109A	● Aqua	Polyoxymethylene (P.O.M.)

Standard-Square Holes without Lid
P.O.M. Material
Packing: 500pcs/dispenser box, 8x500pcs/carton



EMBEDDING CASSETTES

Suitable for most Automatic Embedding Cassette labeling instruments

CODE	COLOR	MATERIAL
MF6903(04)0110W	○ White	Polyoxymethylene (P.O.M.)
MF6903(04)0110Y	● Yellow	Polyoxymethylene (P.O.M.)
MF6903(04)0110G	● Green	Polyoxymethylene (P.O.M.)
MF6903(04)0110P	● Pink	Polyoxymethylene (P.O.M.)
MF6903(04)0110B	● Blue	Polyoxymethylene (P.O.M.)
MF6903(04)0110T	● Tan	Polyoxymethylene (P.O.M.)
MF6903(04)0110M	● Purple	Polyoxymethylene (P.O.M.)
MF6903(04)0110N	● Peach	Polyoxymethylene (P.O.M.)
MF6903(04)0110O	● Orange	Polyoxymethylene (P.O.M.)
MF6903(04)0110A	● Aqua	Polyoxymethylene (P.O.M.)

Histology-Strip Holes with Detachable Lid
P.O.M. Material
Packing:
MF6903: Cassettes & Lids separately packed, 4x500 cassettes + 2x1000 lids/carton
MF6904: Assembled cassettes and lids, 375pcs/dispenser box, 8x375pcs/carton



CODE	COLOR	MATERIAL
MF6903(04)0111W	○ White	Polyoxymethylene (P.O.M.)
MF6903(04)0111Y	● Yellow	Polyoxymethylene (P.O.M.)
MF6903(04)0111G	● Green	Polyoxymethylene (P.O.M.)
MF6903(04)0111P	● Pink	Polyoxymethylene (P.O.M.)
MF6903(04)0111B	● Blue	Polyoxymethylene (P.O.M.)
MF6903(04)0111T	● Tan	Polyoxymethylene (P.O.M.)
MF6903(04)0111M	● Purple	Polyoxymethylene (P.O.M.)
MF6903(04)0111N	● Peach	Polyoxymethylene (P.O.M.)
MF6903(04)0111O	● Orange	Polyoxymethylene (P.O.M.)
MF6903(04)0111A	● Aqua	Polyoxymethylene (P.O.M.)

Biopsy-Fine Square Holes with Detachable Lid
P.O.M. Material
Packing:
MF6903: Cassettes & Lids separately packed, 4x500 cassettes + 2x1000 lids/carton
MF6904: Assembled cassettes and lids, 375pcs/dispenser box, 8x375pcs/carton



CODE	COLOR	MATERIAL
MF6903(04)0112W	○ White	Polyoxymethylene (P.O.M.)
MF6903(04)0112Y	● Yellow	Polyoxymethylene (P.O.M.)
MF6903(04)0112G	● Green	Polyoxymethylene (P.O.M.)
MF6903(04)0112P	● Pink	Polyoxymethylene (P.O.M.)
MF6903(04)0112B	● Blue	Polyoxymethylene (P.O.M.)
MF6903(04)0112T	● Tan	Polyoxymethylene (P.O.M.)
MF6903(04)0112M	● Purple	Polyoxymethylene (P.O.M.)
MF6903(04)0112N	● Peach	Polyoxymethylene (P.O.M.)
MF6903(04)0112O	● Orange	Polyoxymethylene (P.O.M.)
MF6903(04)0112A	● Aqua	Polyoxymethylene (P.O.M.)

Histology-Strip Holes with Detachable Lid
with 4 of 13 x 12mm compartments
P.O.M. Material
Packing:
MF6903: Cassettes & Lids separately packed, 4x500 cassettes + 2x1000 lids/carton
MF6904: Assembled cassettes and lids, 375pcs/dispenser box, 8x375pcs/carton

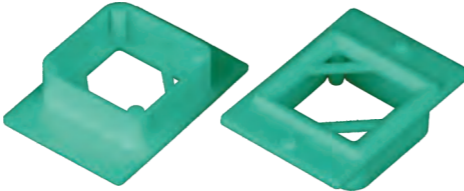


EMBEDDING CASSETTES

Suitable for most Automatic Embedding Cassette labeling instruments

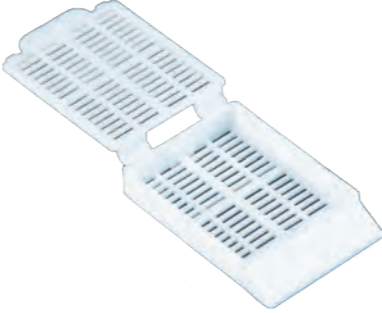
CODE	COLOR	MATERIAL
MF69020201W	○ White	ABS
MF69020201Y	● Yellow	ABS
MF69020201G	● Green	ABS
MF69020201P	● Pink	ABS
MF69020201B	● Blue	ABS
MF69020201T	● Tan	ABS
MF69020201M	● Purple	ABS
MF69020201N	● Peach	ABS
MF69020201O	● Orange	ABS
MF69020201A	● Aqua	ABS

Embedding Cassettes "O" Ring
ABS Material
Packing: 500pcs/dispenser box, 4x500pcs/carton

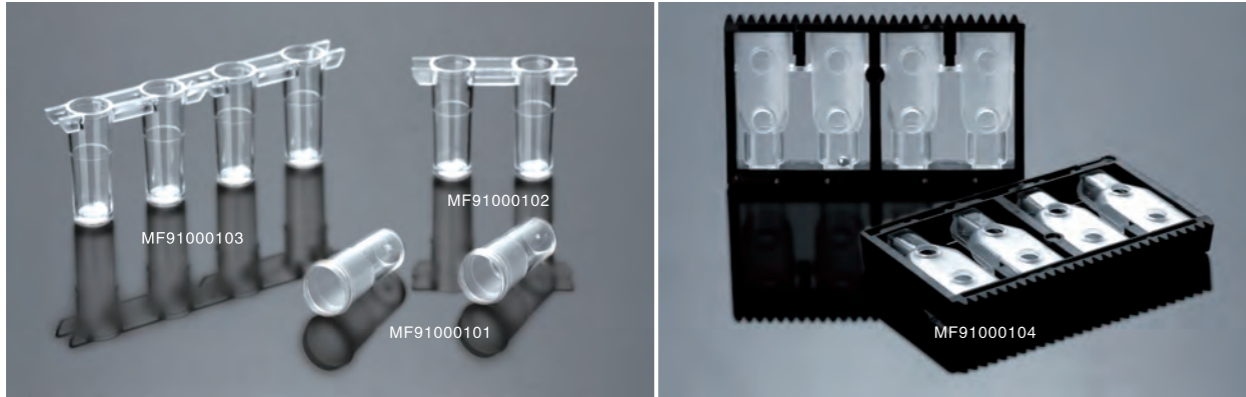


CODE	COLOR	MATERIAL
MF69012107W	○ White	Polyoxymethylene (P.O.)
MF69012107Y	● Yellow	Polyoxymethylene (P.O.)
MF69012107G	● Green	Polyoxymethylene (P.O.)
MF69012107P	● Pink	Polyoxymethylene (P.O.)
MF69012107B	● Blue	Polyoxymethylene (P.O.)
MF69012107T	● Tan	Polyoxymethylene (P.O.)
MF69012107M	● Purple	Polyoxymethylene (P.O.)
MF69012107N	● Peach	Polyoxymethylene (P.O.)
MF69012107O	● Orange	Polyoxymethylene (P.O.)
MF69012107A	● Aqua	Polyoxymethylene (P.O.)

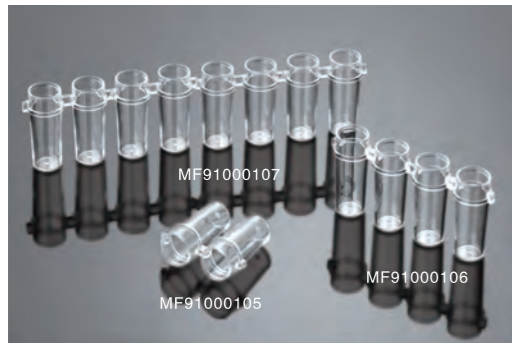
Histology-Strip Holes with Removable
P.O.M. Material
Packing: 250pcs/dispenser box, 8x250pcs/carton



CUVETTE CUP MATCH FOR CRUOR APPARTUS (CE)



MF91000101 Match for German BE 1 Hole Types Cruor Apparatus Material: PP Packing: 30000pcs/ctn, 57x30x40cm	MF91000102 Match for German BE 2 Holes Types Cruor Apparatus Material: PP Packing: 7000pcs/ctn, 48x32x32cm	MF91000103 Match for German BE 4 Holes Types Cruor Apparatus Material: PP Packing: 3500pcs/ctn, 49x33x33cm	MF91000104 Match for German BE aUTOMATIC Cruor Apparatus Material: PP Packing: 2610pcs/ctn, 48x32x32cm
--	--	--	--



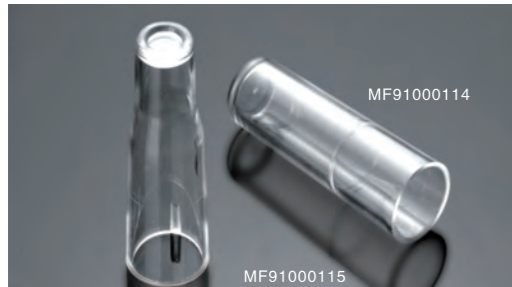
Code	Description	Material	Packing
MF91000105	Match for German BECL 4, 2 Holes types, Cruor Apparatus,	PS	5000pcs/ctn, 56x35x30cm
MF91000106	Match for German BECL 4, 4 Holes types, Cruor Apparatus,	PS	2500pcs/ctn, 56x35x30cm
MF91000107	Match for German BECL 4, 8 Holes types, Cruor Apparatus,	PS	1250pcs/ctn, 56x35x30cm



MF91000108	Match for TECO Blood clot meters, Cruor Apparatus,	PS	13500pcs/ctn, 56x35x30cm
MF91000109	Match for TECO 2 Holes Types, Cruor Apparatus,	PS	5000pcs/ctn, 38x24x34.5cm
MF91000110	Match for TECO 1 Hole Types, Cruor Apparatus,	PS	30000pcs/ctn, 60x26x36cm



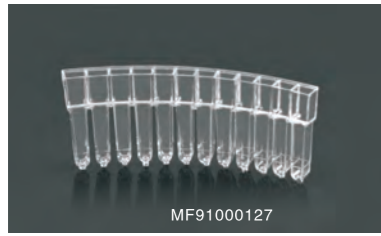
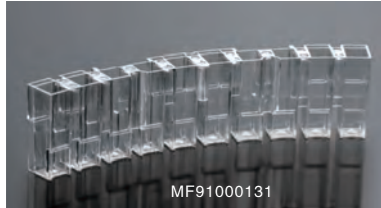
MF91000111	Match for SYSMEX CA530 Cruor Apparatus,	PS	20000pcs/ctn, 56x30x38cm
MF91000112	Match for SYSMEX CA6000 Cruor Apparatus,	PS	20000pcs/ctn, 56x30x38cm
MF91000113	Match for SYSMEX CA100 Cruor Apparatus,	PS	15000pcs/ctn, 48x32x37cm



MF91000114	Match for Spain Cruor Apparatus,	PS	8000pcs/ctn, 49x33x33cm
MF91000115	Match for German Labor Cruor Apparatus,	PS	1000pcs/ctn, 49x33x33cm

Code	Description	Material	Packing
MF91000116	Match for American Pacific and German TECO 4 Holes Types, Cruor Apparatus,	PS	1000pcs/ctn, 49x33x33cm
MF91000117	Match for French Oujialmp, Cruor Apparatus	PS	2000pcs/ctn, 36x20x20cm
MF91000118	Match for Zhongshan Peikang, Cruor Apparatus	PS	2000pcs/ctn, 36x20x20cm
MF91000119	Bleeding Timer(Adult and Child)	ABS	1000pcs/ctn, 53.5x36x26cm
MF910001120	Match for Tianjin Pulisheng and French stago, Cruor Apparatus,	PS	2100pcs/ctn, 50.5x30.5x39.5cm
MF910001121	Match for ZhongQing Shidi, Cruor Apparatus,	PS	2800pcs/ctn, 47.5x44x32cm
MF910001122	Silution Plate, Match for American Coulter color	PS	100pcs/ctn, 49x33x33cm
MF910001124	Match for Beijing Pulang, Cruor Apparatus	PS	10000pcs/ctn, 62x34x35cm
MF910001125	Match for Swiss Serozyme, Cruor Apparatus	PS	4000pcs/ctn, 49x33x33cm
MF91000126	Match for French Stago Automatic, Cruor Apparatus	PS	50pcs/ctn, 50x30x38cm

CUVETTE CUP MATCH FOR CRUOR APPARTUS

	Code	Description	Material	Packing
	MF91000127	Match for Roses Biochemical Apparatus	PS	6000pcs/ctn, 56x41x42cm
	MF91000131	Match for Italy Saba Biochemical Apparatus	PS	1000pcs/ctn, 49x33x33cm

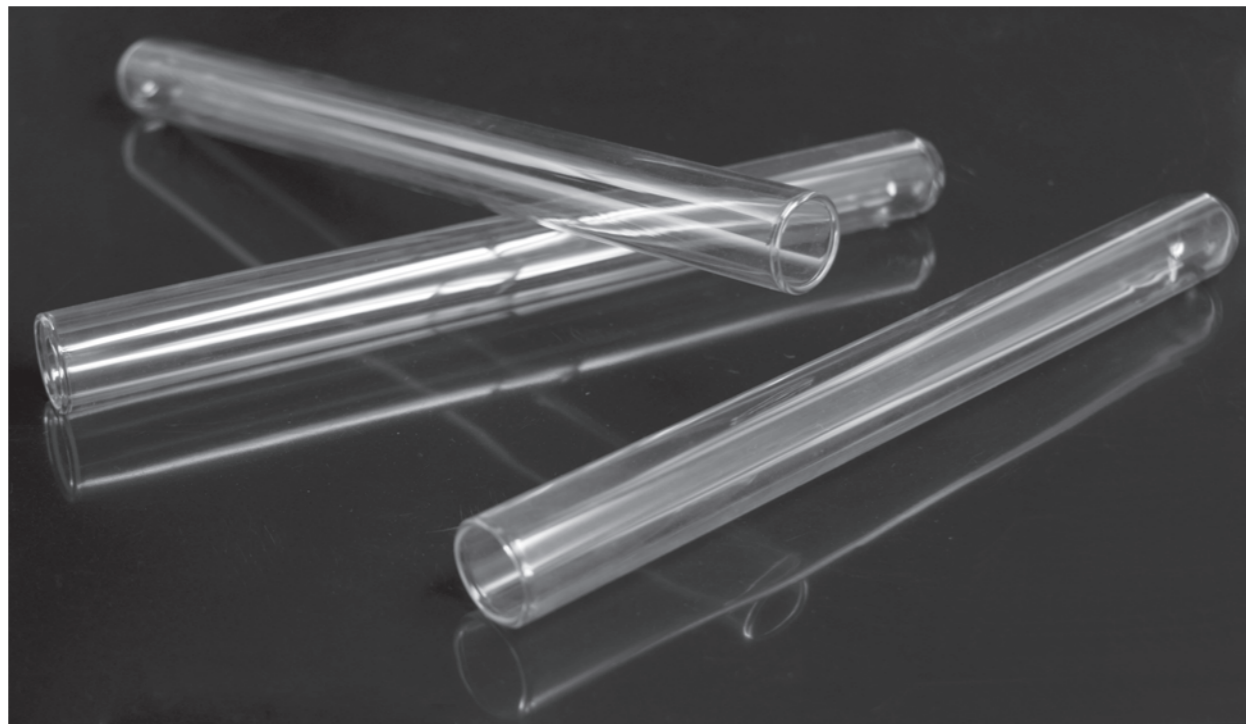
SAMPLE CUPS

	Code	Description	Material	Packing
	MF91000211	Sample cup for Hitachi7060, 7150, Biochemical Apparatus, Φ 16x38mm	PS	5000pcs/ctn, 50x30x38cm
	MF91000212	Sample cup for US Beckman CX Series, Biochemical Apparatus, Φ 13x24mm, 0.5ml	PS	5000pcs/ctn, 50x30x35cm
	MF91000213	Sample cup for 700s, For US Beckman Dubang Biochemical Apparatus, Φ 14x25mm, 1.5ml	PS	10000pcs/ctn, 61x32.5x33cm
	MF91000214	Sample cup for Kodak, Biochemical Apparatus, Φ 13x20mm	PS	8000pcs/ctn, 40x32x30cm
	MF91000215	Sample Cup For US IL, Biochemical Apparatus, Φ 13x17mm	PS	13500pcs/ctn, 56x35x30cm
	MF91000216	Sample Cup For US Corning 550, 560, Biochemical Apparatus, Φ 12x20mm	PS	18000pcs/ctn, 49x33x33cm
	MF91000217	Test Tubes For Swiss Rose, Biochemical Apparatus, Φ 8x34mm(White, Blue)	PP	2400pcs/ctn, 49x33x33cm
	MF91000218	Test Tubes For Aulinbar AU Reaction Cups, Φ 13x38mm	PP	3600pcs/ctn, 48x33x33cm
	MF91000219	Cups For US Abbott CCX, Φ 15x40mm	PS	5000pcs/ctn, 58x35x29cm
	MF91000220	Cups For Hitachi Biochemical Apparatus, Φ 10x37mm	PS	6000pcs/ctn, 49x33x33cm
	MF91000221	Cups For Baolingman, Φ 7x26mm	PE	40000pcs/ctn, 50x30x44cm
	MF91000222	Cups For Shanghai AN Tai, Biochemical Apparatus, Φ 10x19mm	PP	20000pcs/ctn, 56x35x30cm
	MF91000223	Cups For US M10, Biochemical Apparatus, Φ 11x19mm	PP	20000pcs/ctn, 56x35x30cm

TEST TUBES



Code	Description	Material	Packing
MF90111203	Φ 12X60mm, Vol. 3ml, Cylindrical, Plastic	PS	500pcs/bag, 5000pcs/ctn, 56x32x40cm
MF90211203	Φ 12X60mm, Vol. 3ml, Cylindrical, Plastic	PP	500pcs/bag, 5000pcs/ctn, 56x32x40cm
MF90111205	Φ 12X75mm, Vol. 5ml, Cylindrical, Plastic	PS	500pcs/bag, 5000pcs/ctn, 64.5x32.5x45cm
MF90211205	Φ 12X75mm, Vol. 5ml, Cylindrical, Plastic	PP	500pcs/bag, 5000pcs/ctn, 64.5x32.5x45cm
MF90111305	Φ 13X75mm, Vol. 5ml, Cylindrical, Plastic,	PS	500pcs/bag, 5000pcs/ctn, 64.5x32.5x47cm
MF90211305	Φ 13X75mm, Vol. 5ml, Cylindrical, Plastic	PP	500pcs/bag, 5000pcs/ctn, 64.5x32.5x47cm
MF90111610	Φ 16X100mm, Vol. 10ml, Cylindrical, Plastic	PS	500pcs/bag, 5000pcs/ctn, 70x47x31cm
MF90211610	Φ 16X100mm, Vol. 10ml, Cylindrical, Plastic	PP	500pcs/bag, 5000pcs/ctn, 70x47x31cm
MF90121612	Φ 16X102mm, Vol. 12ml, Conical, Plastic,	PS	200pcs/bag, 2000pcs/ctn, 70x47x31cm
MF90221612	Φ 16X102mm, Vol. 12ml, Conical, Plastic	PP	200pcs/bag, 2000pcs/ctn, 70x47x31cm



Code	Description	Material	Packing
MF891111003	Vol. 3ml, Dim.: Φ10x75mm, 0.6mm thick	Borosilicate Glass	250pcs/box, 2000pcs/ctn, 30x21x24cm
MF891311003,	Vol. 3ml, Dim.: Φ10x75mm, 0.8-1.0mm thick	Borosilicate Glass	250pcs/box, 2000pcs/ctn, 30x21x24cm
MF891111205	Vol. 5ml, Dim.: Φ12x75mm, 0.6mm thick	Borosilicate Glass	250pcs/box, 2000pcs/ctn, 44x34x17cm
MF891311205	Vol. 5ml, Dim.: Φ12x75mm, 0.8-1.0mm thick	Borosilicate Glass	250pcs/box, 2000pcs/ctn, 44x34x17cm
MF891111307	Vol. 7ml, Dim.: Φ13x100mm, 0.6mm thick	Borosilicate Glass	250pcs/box, 2000pcs/ctn, 42.5x45.5x23cm
MF891311307	Vol. 7ml, Dim.: Φ13x100mm, 0.8-1.0mm thick	Borosilicate Glass	250pcs/box, 2000pcs/ctn, 42.5x45.5x23cm
MF891211610	Vol. 10ml, Dim.: Φ16x100mm, 0.7mm thick	Borosilicate Glass	250pcs/box, 1000pcs/ctn, 45.5x24.5x35cm
MF891311610	Vol. 10ml, Dim.: Φ16x100mm, 01.0mm thick	Borosilicate Glass	250pcs/box, 1000pcs/ctn, 45.5x24.5x35cm

Code	Description	Material	Packing
MF88241825	Aluminum screw cap, Silicon rubber gasket mounted, serological, Autoclavable, Vol.: 25ml, Dim.: Φ18x145mm, 0.8-1.0mm thick wall	Borosilicate Glass	250pcs/box, 1000pcs/ctn, 66x34x27cm
MF88111205	Screw tubes serological bakelite cap with silicon rubber gasket, round bottom, Autoclavable, Vol. 15ml, Dim.: Φ12x75mm, 0.8-1.0mm thick wall,	Borosilicate Glass	250pcs/box, 2000pcs/ctn, 47.5x25.5x38.5cm
MF88211205	Screw tubes serological, Autoclavable, bakelite cap with silicon rubber gasket, flat bottom, Vol. 5ml, Dim.: Φ12x75mm, 0.8-1.0mm thick wall	Borosilicate Glass	250pcs/box, 2000pcs/ctn, 47.5x25.5x38.5cm
MF8811307	Screw tubes serological, Autoclavable, bakelite cap with silicon rubber gasket, round bottom, Vol. 7ml, Dim.: Φ13x100mm, 0.8-1.0mm thick wall	Borosilicate Glass	250pcs/box, 2000pcs/ctn, 42.5x45.5x23cm
MF88211307	Screw tubes serological, Autoclavable, bakelite cap with silicon rubber gasket, flat bottom, Vol. 7ml, Dim.: Φ13x100mm, 0.8-1.0mm thick wall	Borosilicate Glass	250pcs/box, 2000pcs/ctn, 42.5x45.5x23cm
MF88111610	Screw tubes serological, Autoclavable, bakelite cap with silicon rubber gasket, round bottom, Vol. 10ml, Dim.: Φ16x100mm, 0.8-1.0mm thick wall	Borosilicate Glass	250pcs/box, 2000pcs/ctn, 49x35.5x23.5cm
MF88211610	Screw tubes serological, Autoclavable, bakelite cap with silicon rubber gasket, flat bottom, Vol. 10ml, Dim.: Φ16x100mm, 0.8-1.0mm thick wall	Borosilicate Glass	250pcs/box, 2000pcs/ctn, 49x35.5x23.5cm



Code	Description	Material	Packing
MF88111615	Screw tubes serological bakelite cap with silicon rubber gasket, Autoclavable, round bottom, Vol. 15ml, Dim.: Φ16x150mm, 0.8-1.0mm thick wall	Borosilicate Glass	250pcs/box, 2000pcs/ctn, 43.5x34.5x38cm
MF88211615	Screw tubes serological bakelite cap with silicon rubber gasket, Autoclavable, flat bottom, Vol. 15ml, Dim.: Φ16x150mm, 0.8-1.0mm thick wall	Borosilicate Glass	250pcs/box, 2000pcs/ctn, 43.5x34.5x38cm
MF88112030	Screw tubes serological bakelite cap with silicon rubber gasket, Autoclavable, round bottom, Vol. 30ml, Dim.: Φ20x150mm, 0.8-1.0mm thick wall	Borosilicate Glass	250pcs/box, 2000pcs/ctn, 43.5x34x47.5cm
MF88212030	Screw tubes serological bakelite cap with silicon rubber gasket, Autoclavable, flat bottom, Vol. 30ml, Dim.: Φ20x150mm, 0.8-1.0mm thick wall	Borosilicate Glass	250pcs/box, 2000pcs/ctn, 43.5x34x47.5cm



MF88242825	Makarthy tube aluminum cap with silicon rubber gasket, Autoclavable, flat bottom, Vol. 25ml, Dim. Φ28x85mm, 1.0-1.2mm thick wall	Borosilicate Glass	100pcs/box, 600pcs/ctn, 55x33x29cm
------------	--	--------------------	------------------------------------



MF2030005C	Test tube, Screw cap, round bottom, Vol.5ml	Cap(PE) Tube(PP)	200pcs/pack, 4000pcs/ctn
------------	---	---------------------	-----------------------------



TEST TUBE BRUSH

MF2031001

Material: Wool, Bristle, Nylon
Brush head shape: Fan-shaped, Bar head
Handle: Wire material
Size: Large, Medium, Small

TUBE STOPPERS Flange Type



Code	Description	Material	Packing
MF87010012N	Diam. Φ12mm, Color, Neutral	PE	1000pcs/bag, 20000pcs/ctn, 64x28x29cm
MF87010012W	Diam. Φ12mm, Color, White	PE	1000pcs/bag, 20000pcs/ctn, 64x28x29cm
MF87010012R	Diam. Φ12mm, Color, Red	PE	1000pcs/bag, 20000pcs/ctn, 64x28x29cm
MF87010012M	Diam. Φ12mm, Color, Mauve	PE	1000pcs/bag, 20000pcs/ctn, 64x28x29cm
MF87010012B	Diam. Φ12mm, Color, Blue	PE	1000pcs/bag, 20000pcs/ctn, 64x28x29cm
MF87010012G	Diam. Φ12mm, Color, Green	PE	1000pcs/bag, 20000pcs/ctn, 64x28x29cm

Code	Description	Material	Packing
MF87010013N	Diam. Φ13mm, Color, Neutral	PE	1000pcs/bag, 20000pcs/ctn, 64x28x38cm
MF87010013W	Diam. Φ13mm, Color, White	PE	1000pcs/bag, 20000pcs/ctn, 64x28x38cm
MF87010013R	Diam. Φ13mm, Color, Red	PE	1000pcs/bag, 20000pcs/ctn, 64x28x38cm
MF87010013M	Diam. Φ13mm, Color, Mauve	PE	1000pcs/bag, 20000pcs/ctn, 64x28x38cm
MF87010013B	Diam. Φ13mm, Color, Blue	PE	1000pcs/bag, 20000pcs/ctn, 64x28x38cm
MF87010013G	Diam. Φ13mm, Color, Green	PE	1000pcs/bag, 20000pcs/ctn, 64x28x38cm

Code	Description	Material	Packing
MF87010016N	Diam. Φ16mm, Color, Neutral	PE	1000pcs/bag, 20000pcs/ctn, 64x28x37cm
MF87010016W	Diam. Φ16mm, Color, White	PE	1000pcs/bag, 20000pcs/ctn, 64x28x37cm
MF87010016R	Diam. Φ16mm, Color, Red	PE	1000pcs/bag, 20000pcs/ctn, 64x28x37cm
MF87010016M	Diam. Φ16mm, Color, Mauve	PE	1000pcs/bag, 20000pcs/ctn, 64x28x37cm
MF87010016B	Diam. Φ16mm, Color, Blue	PE	1000pcs/bag, 20000pcs/ctn, 64x28x37cm
MF87010016G	Diam. Φ16mm, Color, Green	PE	1000pcs/bag, 20000pcs/ctn, 64x28x37cm

TUBE STOPPERS High Grip Type



Code	Description	Material	Packing
MF87020012N	Diam. Φ 12mm, Color, Neutral	PE	1000pcs/bag, 20000pcs/ctn, 64x28x31cm
MF87020012W	Diam. Φ 12mm, Color, White	PE	1000pcs/bag, 20000pcs/ctn, 64x28x31cm
MF87020012R	Diam. Φ 12mm, Color, Red	PE	1000pcs/bag, 20000pcs/ctn, 64x28x31cm
MF87020012M	Diam. Φ 12mm, Color, Mauve	PE	1000pcs/bag, 20000pcs/ctn, 64x28x31cm
MF87020012B	Diam. Φ 12mm, Color, Blue	PE	1000pcs/bag, 20000pcs/ctn, 64x28x31cm
MF87020012G	Diam. Φ 12mm, Color, Green	PE	1000pcs/bag, 20000pcs/ctn, 64x28x31cm

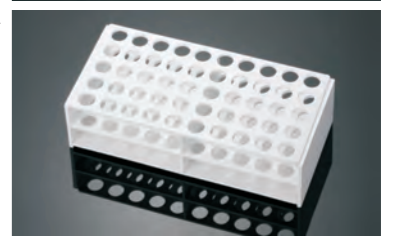
Code	Description	Material	Packing
MF87020016N	Diam. Φ 16mm, Color, Neutral,	PE	1000pcs/bag, 10000pcs/ctn, 60x28.5x37cm
MF87020016W	Diam. Φ 16mm, Color, White	PE	1000pcs/bag, 10000pcs/ctn, 60x28.5x37cm
MF87020016R	Diam. Φ 16mm, Color, Red	PE	1000pcs/bag, 10000pcs/ctn, 60x28.5x37cm
MF87020016M	Diam. Φ 16mm, Color, Mauve	PE	1000pcs/bag, 10000pcs/ctn, 60x28.5x37cm
MF87020016B	Diam. Φ 16mm, Color, Blue	PE	1000pcs/bag, 10000pcs/ctn, 60x28.5x37cm
MF87020016G	Diam. Φ 16mm, Color, Green	PE	1000pcs/bag, 10000pcs/ctn, 60x28.5x37cm

TEST TUBE RACKS CE

Code	Description	Material	Packing
MF86031325	25-Place racks for 12/13mm, Diam. Tubes "Z" shape	Stainless steel	10pcs/box, 60pcs/ctn, 34.5x20x22cm
MF86031350-Z	50-Place racks for 12/13mm, Diam. Tubes "Z" shape	Stainless steel	10pcs/box, 60pcs/ctn, 34.5x19.5x22cm
MF86031625-Z	25-Place racks for 16/17mm, Diam. Tubes "Z" shape	Stainless steel	10pcs/box, 60pcs/ctn, 34.5x20x23.5cm
MF86031650	50-Place racks for 16/17mm, Diam. Tubes "Z" shape	Stainless steel	10pcs/box, 60pcs/ctn, 34.5x19.5x23.5cm



MF86041350	50-Place racks for Φ 13mm tubes	ABS	50pcs/ctn, 55x26.5x45cm
MF86041650	50-Place racks for Φ 16mm tubes	ABS	50pcs/ctn, 54x25.5x57.5cm



MF86031350	50-Place racks for Φ 13mm tubes	Stainless steel	50pcs/ctn, 62x30x46.5cm
MF86031650	50-Place racks for Φ 16mm tubes	Stainless steel	50pcs/ctn, 65x30x50.5cm
MF86031850	50-Place racks for Φ 18mm tubes	Stainless steel	50pcs/ctn, 59.5x30x52cm



MF86011350	50-Place racks for Φ 13mm tubes	PS	50pcs/ctn, 37x25x34cm
MF86011650	50-Place racks for Φ 16mm tubes	PS	50pcs/ctn, 48x27.5x28cm
MF86011840	40-Place racks for Φ 18mm tubes	PS	50pcs/ctn, 48x27.5x28cm



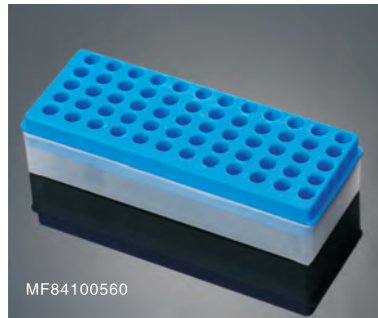
MF86021390	Multi-purpose Tube Rack 90-Place racks for Φ 10-13mm tubes	PP	50pcs/ctn, 45x27.5x41cm
MF86021844	44-Place racks for Φ 15-18mm tubes	PP	50pcs/ctn, 45x27.5x41cm
MF86025021	21-Place racks for Φ 50mm tubes	PP	50pcs/ctn, 45x27.5x41cm



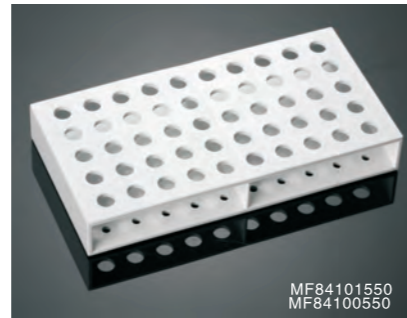
MF86041850	Multi-use Tube Rack 50-Place racks for Φ 18mm tubes	ABS	50pcs/ctn, 72x28x53cm
MF86041801	100-Place racks for Φ 18mm tubes	ABS	50pcs/ctn, 72x28x53cm



CENTRIFUGE TUBES RACKS



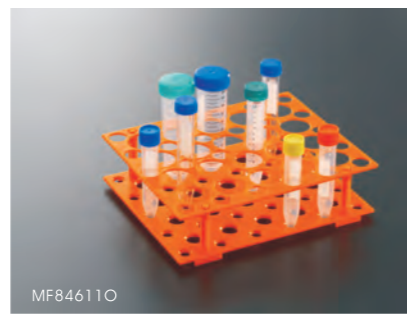
MF84100560
60-place, double use
Material: PP
Packing: 50pcs/ctn
43.5x25.5x41.5cm



MF84100550
50-place, 0.5ml
MF84101550
50-place, 1.5ml
Material: ABS
Packing: 100pcs/ctn
40x36x36.5cm
Packing: 100pcs/ctn
58x33x45.5cm

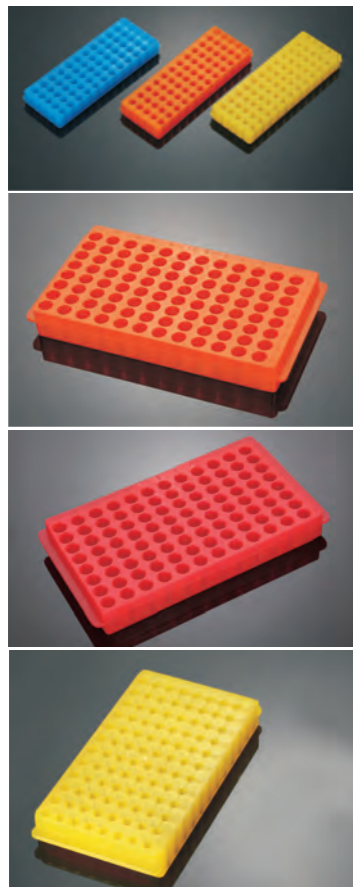


MF84100572
72-wells, 0.5ml
MF84101572
72-wells, 1.5ml
Material: PP
Packing: 100pcs/ctn
58x37.5x51cm



MF846110
Multi-use rack for
15ml & 50ml centrifuge
Material: ABS
Packing: 50pcs/ctn
48x27x38cm

PCR TUBE WORKSTATION



Code	Description	Material	Packing
MF8205600	60-Place for 0.5ml PCR	PP	1pc/bag, 50pcs/ctn, 41x23x27cm
MF8215600	60-Place for 1.5ml PCR	PP	1pc/bag, 50pcs/ctn, 41x23x27cm
MF8205960	96-Place for 0.5ml PCR	PP	1pc/bag, 50pcs/ctn, 59x22x29.5cm
MF8215960	96-Place for 1.5ml PCR	PP	1pc/bag, 50pcs/ctn, 59x22x29.5cm
MF820596R	96-Place for 0.5ml PCR	PP	1pc/bag, 50pcs/ctn, 59x22x29.5cm
MF821596R	96-Place for 1.5ml PCR	PP	1pc/bag, 50pcs/ctn, 59x22x29.5cm
MF820596Y	96-Place for 0.5ml PCR	PP	1pc/bag, 50pcs/ctn, 59x22x29.5cm
MF821596Y	96-Place for 1.5ml PCR	PP	1pc/bag, 50pcs/ctn, 59x22x29.5cm

MICRO CENTRIFUGE TUBES

Code	Description	Material	Packing
MF851002Y	Conical bottom without graduation, with lid, Color: Yellow, Vol. 0.2ml	PP	50000pcs/ctn, 55X31X45cm
MF851002B	Conical bottom without graduation, with lid, Color: Blue, Vol. 0.2ml	PP	50000pcs/ctn, 55X31X45cm
MF851002R	Conical bottom without graduation, with lid, Color: Red, Vol. 0.2ml	PP	50000pcs/ctn, 55X31X45cm
MF851002N	Conical bottom without graduation, with lid, Color: White, Vol. 0.2ml	PP	50000pcs/ctn, 55X31X45cm



MF851005	Conical bottom with molded graduation, with lid, Vol. 0.5ml	PP	20000pcs/ctn, 55X31X45cm
MF851015	Conical bottom with molded graduation, with lid, Vol. 1.5ml	PP	10000pcs/ctn, 55X31X45cm
MF852020	Round bottom with molded graduation, with lid, Vol. 2.0ml	PP	6000pcs/ctn, 45X32X43cm



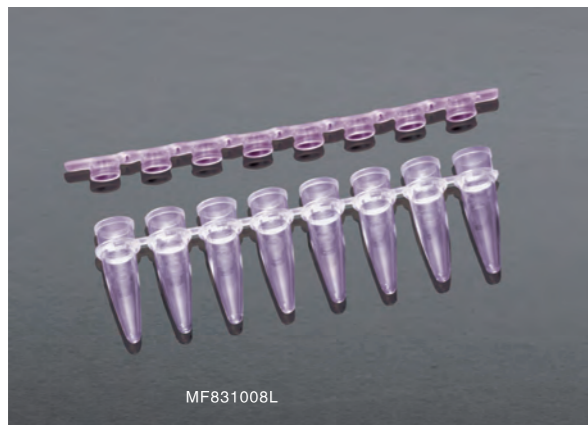
MF851015S	With screw cap, without graduation, Cap color: White, red, yellow, ect. Vol. 1.5ml,	Cap(PE) Tube(PP)	10000pcs/ctn, 58.5X32X42cm
-----------	---	---------------------	-------------------------------



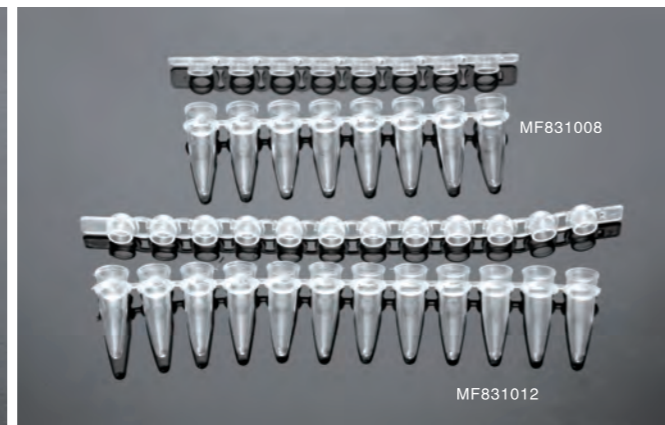
CENTRIFUGE TUBES



Code	Description	Volume	Material	Packing
MF852050	Round bottom, with lid, without graduation	Vol. 5ml	PP	5000pcs/ctn 57x33x50cm
MF852070	Round bottom, with lid, without graduation	Vol. 7ml	PP	3200pcs/ctn, 57x35x41cm
MF852100	Round bottom, with lid, without graduation	Vol. 10ml	PP	2000pcs/ctn 57x33x41cm
MF851100	with screw cap, Conical bottom, printed graduation,	Vol. 10ml	CAP(PE) TUBE(PP)	2000pcs/ctn 55.5x42x42cm
MF851150	with screw cap, Conical bottom, printed graduation,	Vol. 15ml	CAP(PE) TUBE(PP)	1000pcs/ctn 62x34x29cm
MF853500	with screw cap, Conical bottom, Self-standing, printed graduation	Vol. 50ml	CAP(PE) TUBE(PP)	500pcs/ctn 57x30x46cm
MF851500	with screw cap, Conical bottom, printed graduation	Vol. 50ml	CAP(PE) TUBE(PP)	500pcs/ctn 62X34X37cm



MF831008L
PCR Tube, 8 stripes(colored),
Without graduation,
Material: PP,
Packing: 6000pcs/ctn, 56x41x42cm

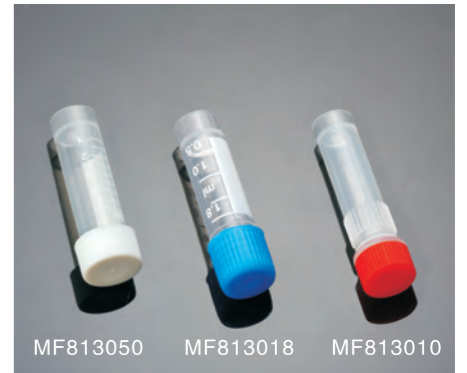


MF831008
PCR Tube, 8 stripes,
Without graduation,
Material: PP,
Packing: 6000pcs/ctn, 56x41x42cm

MF831012
PCR Tube, 12 stripes,
Without graduation,
Material: PP,
Packing: 4000pcs/ctn, 56x41x42cm

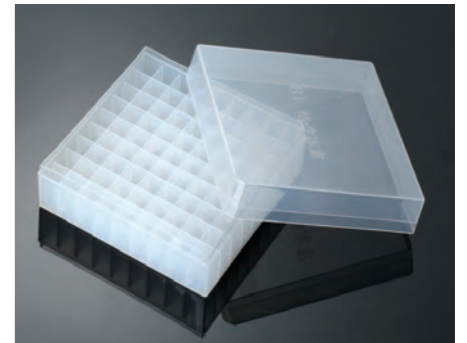
CRYOGENIC TUBES

Code	Description	Material	Packing
MF813050	With printed graduation, Vol. 5ml	Cap(PE) Tube(PP)	2000pcs/ctn, 50x30x38cm
MF813018	With printed graduation, Vol. 1.8ml	Cap(PE) Tube(PP)	5000pcs/ctn, 50x30x36cm
MF813010	Without printed graduation, Vol. 1ml	Cap(PE) Tube(PP)	6000pcs/ctn, 48x32x32cm



FREEZING BOXES

Code	Description	Material	Packing
MF80001881	Freezing boxes, 81-place for 1.8ml Cryogenic Tubes	PP	1pc/bag, 50pcs/ctn, 66.5x27.5x27.5cm
MF80001801	Freezing boxes, 100-place for 1.8ml Cryogenic Tubes	PP	1pc/bag, 50pcs/ctn, 76.5x31x28.5cm



CAPILLARY

Code	Description
MF79000075	Inner diameter: 1.1 - 1.2mm Outer diameter: 1.5 - 1.6mm Length: 75mm



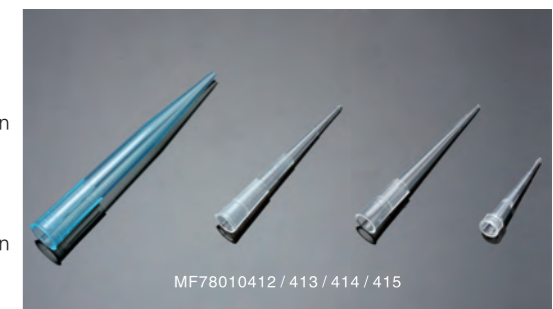
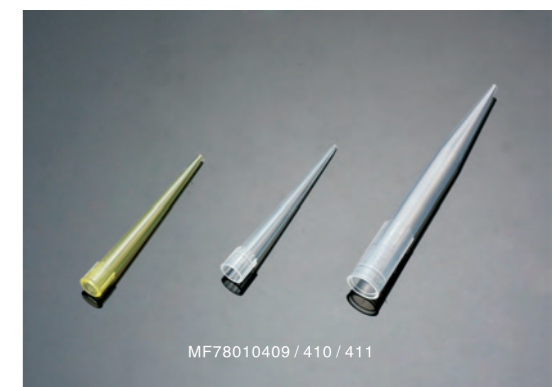
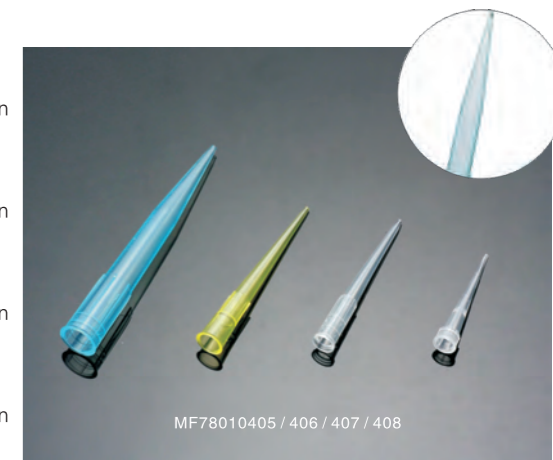
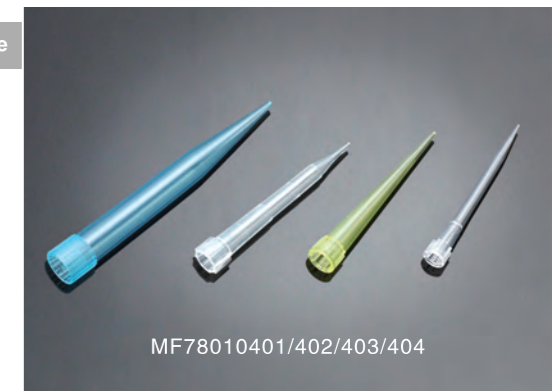
MF79000075B
Without Heparin

MF79000075R
With Heparin



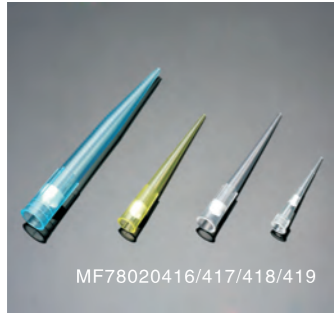
PIPET TIPS

Code	Volume	Color	Filter	Sterile	Suitable Pipette
MF78010401	1000ul	Blue	No	No	Eppendorf
MF78010402	300ul	Natural	No	No	Eppendorf
MF78010403	200ul	Yellow	No	No	Eppendorf
MF78010404	10ul	Natural	No	No	Eppendorf
MF78010405	1000ul	Blue	No	No	Gilson, Qingyun
MF78010406	200ul	Yellow	No	No	Gilson, Qingyun
MF78010407	20ul	Natural	No	No	Gilson, Qingyun
MF78010408	10ul	Natural	No	No	Gilson, Qingyun
MF78010409	4x49	Yellow	No	No	Qingyun III
MF78010410	6x50	Natural	No	No	Qingyun IV
MF78010411	4x70	Natural	No	No	Qingyun III/IV
MF78010412	1000ul	Blue	No	No	Finland
MF78010413	200ul	Natural	No	No	Finland pipette with graduation
MF78010414	200ul	Natural	No	No	Finland pipette with graduation
MF78010415	10ul	Natural	No	No	Finland





PIPET TIPS



Code	Volume	Color	Filter	Sterile	Suitable Pipette
MF78020416	1000ul	Blue	Yes	No	Finland/Gilson
MF78020417	200ul	Yellow	Yes	No	Finland/Gilson
MF78020418	200ul	Natural	Yes	No	Finland/Gilson
MF78020419	10ul	Natural	No	No	Finland/Gilson



MF78020419-1	1ml	Natural	No	No	Multi use suction nozzle
MF78020419-3	200ul	Natural	No	No	Multi use suction nozzle
MF78020419-2		Natural	No	No	Kodak multi use suction nozzle



MF78020420	5ml	Natural	No	No	Dalong
MF78020421	5ml	Natural	No	No	Finlan
MF78020422	5ml	Natural	No	No	Gilson/Qingyun



MF78010423		Black	No	No	Enzyme immunoassay Analyzer
------------	--	-------	----	----	-----------------------------



MF78010424		Black	No	No	Enzyme immunoassay Analyzer
------------	--	-------	----	----	-----------------------------

TIPS BOX

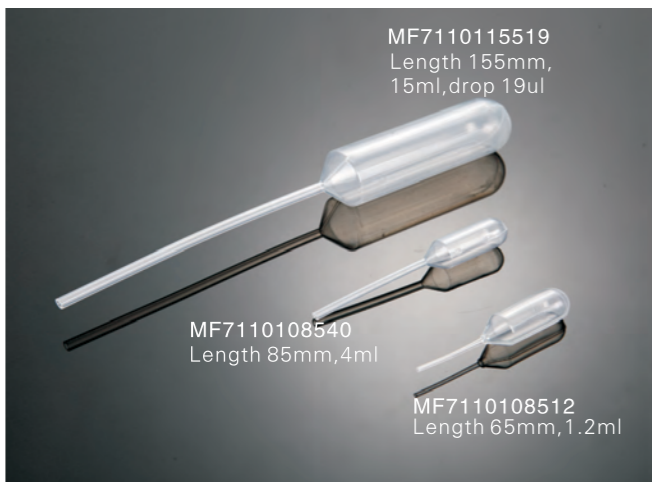
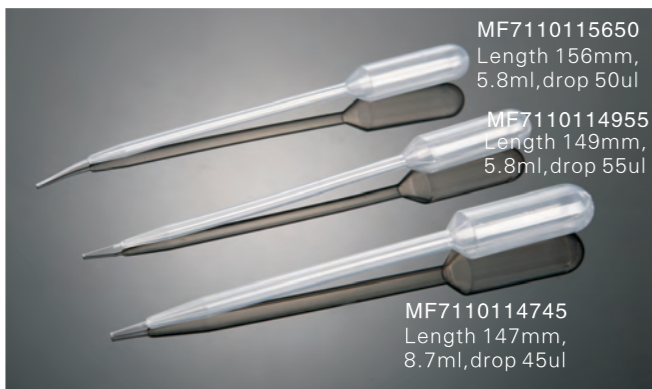


Code	Description	Material
MF77100001	Racks for tips, 1000ul, 100wells	PP
MF77020096	Racks for tips, 200ul, 96wells	PP
MF77001096	Racks for tips, 10ul, 96wells	PP

DISPOSABLE TRANSFER PIPETTES

Code	Description	Material	Packing
MF7110106515	Length: 65mm, Drop: 15ul	PE	20000pcs/ctn, 76x44x24cm
MF7110106725	Length: 67mm, Drop: 25ul	PE	20000pcs/ctn, 45x30x46cm
MF7110108020	Length: 80mm, Drop: 20ul	PE	20000pcs/ctn, 76x44x24cm
MF7110114815	Length: 148mm, Drop: 15ul	PE	5000pcs/ctn, 79x31x44cm
MF7110106456	Length: 65mm, Drop: 46ul	PE	20000pcs/ctn, 45x30x46cm
MF7110106648	Length: 66mm, 0.2ml, Drop: 48ul	PE	20000pcs/ctn, 45x30x46cm
MF7110108540	Length: 85mm, Drop: 40ul	PE	20000pcs/ctn, 45x30x46cm
MF7110111546	Length: 115mm, Drop: 46ul	PE	20000pcs/ctn, 56.5x30x39.5cm
MF7110114545	Length: 145mm, Drop: 45ul	PE	5000pcs/ctn, 76x44x24cm
MF7110123040	Length: 230mm, Drop: 40ul	PE	5000pcs/ctn, 79x31x44cm
MF7110135055	Length: 350mm, 0.5ml, Drop: 55ul	PE	5000pcs/ctn, 82x34x51cm
MF7110114342	Length: 143mm, 1ml, Drop: 42ul	PE	5000pcs/ctn, 76x44x26cm
MF7110114545	Length: 145mm, 1ml, Drop: 45ul	PE	5000pcs/ctn, 76x44x26cm
MF7110116042	Length: 160mm, 1ml, Drop: 42ul	PE	5000pcs/ctn, 76x44x26cm
MF7110115048	Length: 150mm, 2ml, Drop: 48ul	PE	5000pcs/ctn, 76x44x26cm
MF7110116048	Length: 160mm, 3ml, Drop: 48ul	PE	5000pcs/ctn, 79x31x44cm
MF7110116252	Length: 162mm, 3ml, Drop: 52ul	PE	5000pcs/ctn, 79x31x44cm 20000pcs/ctn,
MF7110107835	Length: 78mm, Drop: 35ul	PE	70x50x33cm 20000pcs/ctn,
MF7110118248	Length: 182mm, 3ml, Drop: 48ul	PE	70x50x33cm





TRANSFER PIPETTES

Code	Accuracy	Volume	Subdivision	Material
MF70101005	0.1	0.5ml	1/100	Borosilicate, A
MF70201005	0.2	0.5ml	1/100	Borosilicate, B
MF70101010	0.1	1.0ml	1/100	Borosilicate, A
MF70201010	0.2	1.0ml	1/100	Borosilicate, B
MF70101020	0.1	2.0ml	1/100	Borosilicate, A
MF70201020	0.2	2.0ml	1/100	Borosilicate, B
MF70101050	0.1	5.0ml	1/10	Borosilicate, A
MF70201050	0.2	5.0ml	1/10	Borosilicate, B
MF70101100	0.1	10.0ml	1/10	Borosilicate, A
MF70201100	0.2	10.0ml	1/10	Borosilicate, B
MF70101200	0.1	20.0ml	1/10	Borosilicate, A
MF70201200	0.2	20.0ml	1/10	Borosilicate, B
MF70101250	0.1	25.0ml	1/10	Borosilicate, A
MF70201250	0.2	25.0ml	1/10	Borosilicate, B

SEROLOGICAL PIPET

1. Available with 7 capacities of 1.0, 2.0, 5.0, 10.0, 25.0, 50.0ml
2. 1.0, 2.0 and 5.0ml are stretched, while 10.0, 25.0, 50.0ml are ultrasonically welded at tip and mouth-piece
3. Graduation are calibrated for accurate dispensing to within $\pm 2\%$
4. Different color ring for easy identification
5. Bidirectional graduations on the pipets provide added applicability
6. Negative graduation allows additional working volume
7. All pipets are supplied with a filter plug
8. Strict consistency tested
9. Non-pyrogenic

Code	Volume	Subdivision	Color	Sterile	Qty/bag
MF70302010	1ml	1/100	Yellow	Yes	1pc/bag 25pcs/bag
MF70302020	2ml	1/50	Green	Yes	1pc/bag 25pcs/bag
MF70302050	5ml	1/10	Blue	Yes	1pc/bag 25pcs/bag
MF70302100	10ml	1/10	Orange	Yes	1pc/bag 25pcs/bag
MF70302250	25ml	2/10	Red	Yes	1pc/bag 25pcs/bag
MF70302500	50ml	5/10	Purple	Yes	1pc/bag 25pcs/bag



PASTEUR PIPETTE

7mm external diameter
Straight tip, available with closed and opened

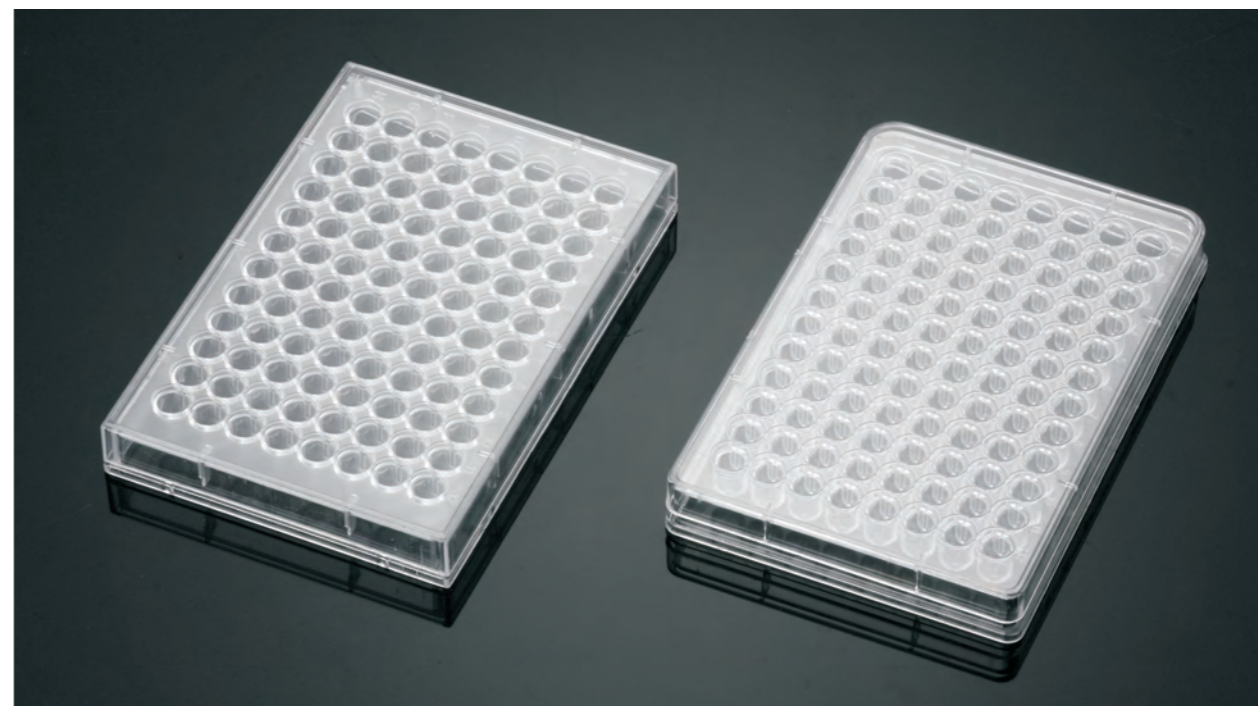
Code	Description	Material
MF7120215001	Short type 150mm with cotton	Soda Glass
MF7120215002	Short type 150mm	Soda Glass
MF7120223001	Long type 230mm with cotton	Soda Glass
MF7120223002	Long type 230mm	Soda Glass



MICROPLATES



Sterilization: E.O. or Gamma Radiation



Code	Description	Material	Packing
MF76020296	96well, Individual pack, without lid, u-shape bottom	PS	1pc/flow pack, 100pcs/ctn
MF76010296	96well, Individual pack, with lid, u-shape bottom	PS	1pc/flow pack, 100pcs/ctn
MF76020396	96well, Individual pack, without lid, v-shape bottom	PS	1pc/flow pack, 100pcs/ctn
MF76010396	96well, Individual pack, with lid, v-shape bottom	PS	1pc/flow pack, 100pcs/ctn
MF76020196	96well, Individual pack, without lid, flat-shape bottom	PS	1pc/flow pack, 100pcs/ctn
MF76010196	96well, Individual pack, with lid, flat-shape bottom	PS	1pc/flow pack, 100pcs/ctn
MF76010096	Optional lid for microplate 96 well, Individual pack	PS	1pc/flow pack, 100pcs/ctn

MICROPLATES CE



Clear coordinate makes the operation more convenient. The unique slant corner design ensure the lid in single direction and avoids cross contamination. Raised well rims prevent cross contamination. Flange design for the wells prevent cross contamination. Convex ring on the lid inner side can prevent the medium from being evaporated or polluted.

Code	Description	Size(mm)	Material	Packing
MF76010306	6 Wells, Individual pack, with lid, Flat-shape bottom	127X85X23	PS	1pc/flow pack, 200pcs/ctn
MF76010312	12 Wells, Individual pack, with lid, Flat-shape bottom	127X85X22.5	PS	1pc/flow pack, 200pcs/ctn
MF76010324	24 Wells, Individual pack, with lid, Flat-shape bottom	126.7X84.4X22	PS	1pc/flow pack, 200pcs/ctn
MF76010348	48 Wells, Individual pack, with lid, Flat-shape bottom	127X85X22.5	PS	1pc/flow pack, 200pcs/ctn

PETRI DISHES CE



Code	Description	Specification	Material	Packing
MF75010035	Petri dishes	Φ35mm	PS	2300pcs/ctn, 55x35x30cm
MF75013060	Petri dishes	Φ60mm	PS	1040pcs/ctn, 53.5x3x35.5cm
MF75014070	Petri dishes	Φ70mm	PS	720pcs/ctn, 38x37x33cm
MF75010090	Petri dishes	Φ90mm	PS	500pcs/ctn, 48x47x34cm
MF75010150	Petri dishes	Φ150mm	PS	110pcs/ctn, 45x35x45cm
MF75020090	Petri dishes	Φ90mm 2 Sections	PS	500pcs/ctn, 48x47x34cm
MF75030090	Petri dishes	Φ90mm 3 Sections	PS	500pcs/ctn, 48x47x34cm
MF75013065	Petri dishes with counting net	Φ65mm	PS	1000pcs/ctn, 71x36x35cm

SWAB CE

Code	Desc.	Spec.	Material	Packing
MF720101	Swab with stainless steel applicator	Male	PS	300pcs/ctn, 58x34x41cm
MF720301	Swab with wooden applicator	Female	PP	2400pcs/ctn, 53x37x40cm

Swab with Medium
 PP Tube, Labeled, 13x155mm, plastic stick, viscose head
 MF720501A Swab Amies medium
 MF720501AC Swab Amies medium with charcoal
 MF720501B Swab Cary-Blair medium
 MF720501BC Swab Cary-Blair medium with charcoal
 MF720501S Swab Stuart medium
 MF720501SC Swab Stuart medium with charcoal

INOCULATION LOOPS



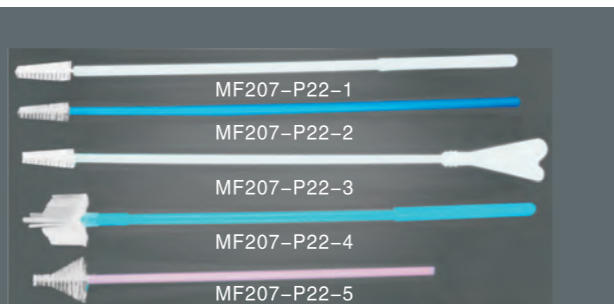
Code	Description	Material	Packing
MF74110001	1ul + incorporated needle, neutral color, 20pcs/blister bag	AS/ABS	500pcs/box, 5000pcs/ctn, 40x25.5x36.5cm
MF74120001	1ul + incorporated needle, neutral color, 10pcs/blister bag	AS/ABS	500pcs/box, 5000pcs/ctn, 51x25.5x34.5cm
MF74130001	1ul + incorporated needle, neutral color, 5pcs/blister bag	AS/ABS	500pcs/box, 5000pcs/ctn, 37x25.5x36.5cm
MF74140001	1ul + incorporated needle, neutral color, 1pcs/blister bag	AS/ABS	100pcs/box, 5000pcs/ctn, 50x40x38cm
MF74110010	10ul + incorporated needle, blue color, 20pcs/blister bag	AS/ABS	500pcs/box, 5000pcs/ctn, 50x40x38cm
MF74120010	10ul + incorporated needle, blue color, 10pcs/blister bag	AS/ABS	500pcs/box, 5000pcs/ctn, 50x40x38cm

Code	Description	Material	Packing
MF74130010	10ul + incorporated needle, blue color, 5pcs/blister bag	AS/ABS	500pcs/box, 5000pcs/ctn, 50x40x38cm
MF74140010	10ul + incorporated needle, blue color, 1pcs/blister bag	AS/ABS	100pcs/box, 5000pcs/ctn, 50x40x38cm
MF74110110	1ul + 10ul , yellow color, 20pcs/blister bag	AS/ABS	500pcs/box, 5000pcs/ctn, 50x40x38cm
MF74120110	1ul + 10ul , yellow color, 10pcs/blister bag	AS/ABS	500pcs/box, 5000pcs/ctn, 50x40x38cm
MF74130110	1ul + 10ul , yellow color, 5pcs/blister bag	AS/ABS	500pcs/box, 5000pcs/ctn, 50x40x38cm
MF74140110	1ul + 10ul , yellow color, 1pcs/blister bag	AS/ABS	500pcs/box, 5000pcs/ctn, 50x40x38cm



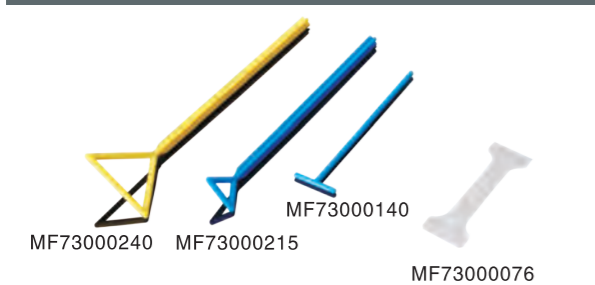
CERVICAL SET

- MF207-P23
- Glass slide -----1pc
- Cervical brush (MF207-P22-2) -----1pc
- Wooden Applicator, 15cm-----1pc
- Wooden cervical scraper-----1pc
- Hard blister packing



CERVICAL RAMBRUSH

MF207-P22
Used to sampling examination for male and female. Discard after use.



CELL SPREADER

Material: PS/PP
MF73000215 Length 215mm, blade width 30mm, Blue color
MF73000240 Length 240mm, blade width 60mm, Yellow color
MF73000140 Length 140mm, blade width 35mm, Blue color
MF73000076 Length 76mm, Blade width 26mm, Natural color

ADJUSTABLE VOLUME PIPETTE



Code	Description	Volume rang	Accuacy	Repeatability
MF20810002	U2	0.2 - 2ul	± 12.0 - 2.0%	≤ 6.0 - 0.70%
MF20820010	U10	1 - 10ul	± 3.0 - 1.0%	≤ 1.5 - 0.40%
MF20830020	U20	2 - 20ul	± 3.0 - 1.0%	≤ 1.5 - 0.30%
MF20840050	U50	5 - 50ul	± 2.0 - 1.0%	≤ 1.5 - 0.20%
MF20850100	U100	10 - 100ul	± 2.0 - 0.8%	≤ 0.5 - 0.15%
MF20860200	U200	20 - 200ul	± 2.0 - 0.8%	≤ 0.5 - 0.15%
MF20871000	U1000	100 - 1000ul	± 1.5 - 0.8%	≤ 0.3 - 0.15%
MF20885000	U5000	1000 - 5000ul	± 1.0 - 0.7%	≤ 0.3 - 0.15%
MF20891001	U10000	1000 - 10000ul	± 3.0 - 0.7%	≤ 0.3 - 0.15%



ADJUSTABLE VOLUME PIPETTE

Code	Volume Range(ul)	Increment(ul)	Test Volume(ul)	Inaccuracy(%)	Imprecesion(%)
MF30130010	0.5 - 10	0.1	10	± 3.0	≤ 2.0
			5	± 6.0	≤ 3.0
			1	± 10.0	≤ 3.0
MF30140020	2 - 20	0.5	20	± 3.0	≤ 1.5
			10	± 3.0	≤ 2.0
			2	± 10.0	≤ 3.0
MF30150050	5 - 50	0.5	50	± 2.4	≤ 1.5
			25	± 2.8	≤ 2.0
			5	± 6.0	≤ 3.0
			1	± 1.5	≤ 1.0
MF30160100	10 - 100	1	100	± 2.2	≤ 1.5
			50	± 3.0	≤ 2.0
			10	± 1.5	≤ 1.0
MF30170200	20 - 200	1	200	± 1.5	≤ 1.0
			100	± 1.5	≤ 1.0
			20	± 3.0	≤ 1.5
MF30180200	50 - 200	1	200	± 1.5	≤ 1.0
			100	± 1.5	≤ 1.0
			50	± 2.2	≤ 1.5
MF30191000	100 - 1000	5	1000	± 1.2	≤ 0.5
			500	± 1.5	≤ 0.5
			100	± 1.5	≤ 1.0
MF30201000	200 -1000	5	1000	± 1.2	≤ 0.5
			500	± 1.5	≤ 0.5
			200	± 1.5	≤ 1.0
MF30215000	1000 - 5000	50	5000	± 1.0	≤ 0.5
			2500	± 1.0	≤ 0.5
			1000	± 1.2	≤ 0.5

FIXED VOLUME PIPETTE

Code	Volume (ul)	Inaccuracy(%)	Imprecesion(%)
MF30010005	5	±4.8	≤ 3.0
MF30020010	10	± 3.0	≤ 2.0
MF30030020	20	± 2.4	≤ 1.0
MF30040025	25	± 2.4	≤ 1.0
MF30050050	50	± 2.4	≤ 1.0
MF30060100	100	± 1.5	≤ 0.8
MF30070200	200	± 1.2	≤ 0.7
MF30080250	250	± 1.2	≤ 0.7
MF30090500	500	± 1.2	≤ 0.7
MF30101000	1000	± 1.0	≤ 0.5
MF30112000	2000	± 1.0	≤ 0.5
MF30125000	5000	± 1.0	≤ 0.5

PIPETTE STAND



MF20390006
ABS Material, 6 holes
1pc/box, 8pcs/ctn, 52x32x35cm

MF20380006
PP Material, 6 holes
1pc/box, 8pcs/ctn, 40x40x40cm

MF20400008
ABS Material, 8holes,
1pc/box, 8pcs/ctn, 52x32x35cm

PIPETTE PUMP

Code	Description	Color	Packing
MF20690002	2ml	Blue	100pcs/ctn, 37x19x19cm
MF20690010	10ml	Green	100pcs/ctn, 37x19x29cm
MF20690025	25ml	Red	100pcs/ctn, 47x22x36cm

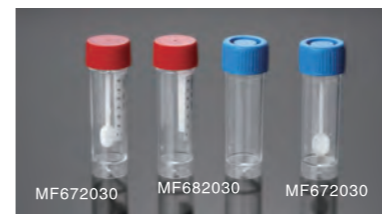
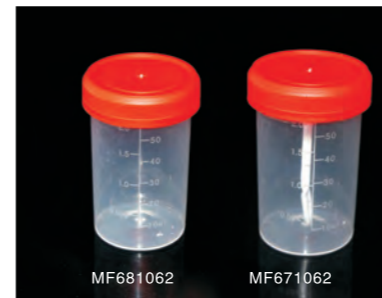
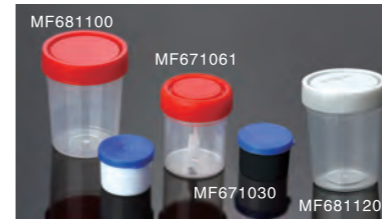


PIPETTE RESERVOIR

Code	Description	Material
MF2041101	138x55x32mm	PP
MF2041102	138x46x25mm	PP

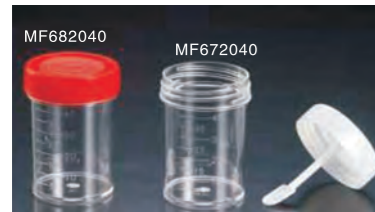
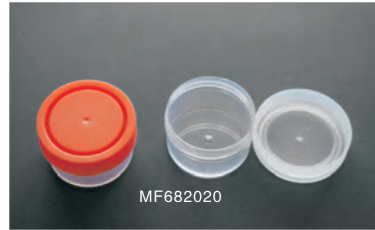


CONTAINER



Code	Description	Material	Packing
MF681100	Urine Container, With screw cap, 100ml graduated	CAP(PE) Cup(PP)	250pcs/ctn, 65x40x30cm
MF681120	Urine Container, With screw cap, 120ml graduated	CAP(PE) Cup(PP)	250pcs/ctn, 65x40x32cm
MF671030	Stool Container, 30ml, with spoon	CAP(PE) Cup(PP)	1200pcs/ctn, 52x34.5x37cm
MF671061	Stool Container, 60ml, with spoon	CAP(PE) Cup(PP)	500pcs/ctn, 58x34x43cm
MF681060	Urine Container, With screw cap, 60ml graduated	CAP(PE) Cup(PP)	300pcs/ctn, 50x27x43cm
MF671060	Stool Container, With screw cap, 60ml graduated	CAP(PE) Cup(PP)	300pcs/ctn, 50x27x43cm
MF671120	Stool Container, With screw cap, 120ml graduated, With spoon	CAP(PE) Cup(PP)	250pcs/ctn, 65x40x32cm
MF681062	Urine Container, With screw cap, 60ml	CAP(PE) Cup(PP)	500pcs/ctn, 56x42x42cm
MF671062	Stool Container, With screw cap, 60ml	CAP(PE) Cup(PP)	500pcs/ctn, 56x42x42cm
MF681061	Urine Container, 60ml	CAP(PE) Cup(PP)	500pcs/ctn, 58x34x43cm
MF681040	Urine Container, With graduation, 40ml	CAP(PE) Cup(PP)	800pcs/ctn, 50x35x45cm
MF681041	Container, With graduated, 40ml	CAP(PE) Cup(PP)	500pcs/ctn, 49x42x33cm
MF681030	Container, 30ml	CAP(PE) Cup(PP)	800pcs/ctn, 53.5x37x36.5cm
MF681020	Sputum Container, 20ml	CAP(PE) Cup(PP)	2000pcs/cst, 57x37.5x43.5cm
MF671031	Specimen Cup, With spoon, 30ml	CAP(PE) Cup(PP)	880pcs/ctn, 61x33x37cm
MF672030	Specimen Cup, With spoon, 30ml	CAP(PE) Cup(PS)	880pcs/ctn, 61x33x37cm
MF681031	Specimen cup, 30ml	CAP(PE) Cup(PP)	880pcs/ctn, 61x33x37cm
MF682030	Specimen cup, 30ml	CAP(PE) Cup(PS)	880pcs/ctn, 61x33x37cm

CONTAINER CE

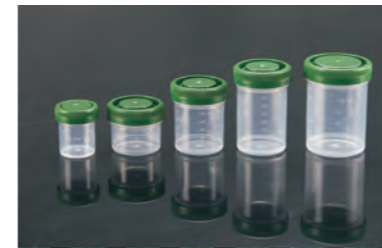


Code	Description	Material	Packing
MF682020	Sputum Container With screw cap, 20ml	CAP(PE) CUP(PS)	1000pcs/ctn, 55x38x47cm
MF681042	Sputum Container With screw cap, 40ml	CAP(PE) CUP(PP)	500pcs/ctn, 46.5x30x45cm
MF682025	Sputum Container With screw cap, 25ml	CAP(PE) CUP(PS)	500pcs/ctn, 50x30x33cm
MF682040	Urine Container With screw cap, 40ml	CAP(PE) CUP(PS)	500pcs/ctn, 46.5x30x43cm
MF672040	Stool Container With screw cap, 40ml	CAP(PE) CUP(PS)	500pcs/ctn, 46.5x30x43cm
MF683040	Urine Cup, 40ml	PVC	10000pcs/ctn, 48x26x32cm
MF682005	Stool Container, 5ml	CUP(PS)	5000pcs/ctn
MF671005	Stool Container, 5ml	CUP(PP)	5000pcs/ctn
	Urine collection system(Cup)	CUP(PP)	250pcs/ctn
MF684100	Urine collection system(Tube)	Tube(PET)	1800pcs/ctn

FLIP-TOP SAMPLE VIALS CE

MF681045
PP material, hinged top cap,
Leakproof, 45ml graduation, Total volume 60ml, I.D. 23X84mm
For storing and packaging a wide range of solid and liquid samples.

HISTOLOGY SPECIMEN CONTAINER CE



- Made of Non-cytotoxic polypropylene
- Cap Material: HDPE
- Top and bottom gripping assures easy opening and closing when wearing gloves
- Half-transparency containers with graduations have easy viewing
- Non-sterile/Sterile

Cat. No.	511020	511040	511060	511090	511120	511250	511500	511101
Capacity	20ml	40ml	60ml	90ml	120ml	250ml	500ml	1000ml
Pack	Bulk	Bulk	Bulk	Bulk	Bulk	Bulk	Bulk	Bulk
Qty/Ctn	1000	500	500	300	300	154	132	64

MEASURING CUP

In various laboratory usage,
Have the good chemistry to bear to suffer the sex;
Engrave the degree clear,
the convenience read the number;
Can't be on the heating plank usage.



MF66000250 MF66000400 MF66000800 MF66000030



MF66011000 MF66010800 MF66000100



MF65000250 MF650000500



MF64010500 MF64000500 MF64000250

BEAKER

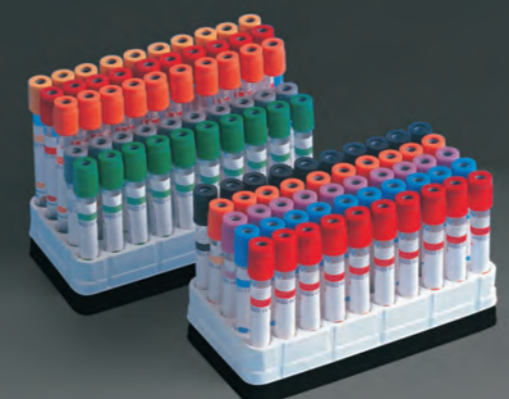
In the manufacturing of various laboratory usage,
PP material,
have the good chemistry to bear to suffer the sex;
Engrave the degree clear, the convenience the number;
Can't be on the heating plank usage.

BOTTLE WASHER

Material: LDPE
Wide/Narrow
Have the good chemistry to bear to strong acids or alkali,
can't be on the heating plank usage.
Size: 250ml/500ml/1000ml,
with colored screw cap(Green/blue/red/yellow,white)



VACUUM BLOOD COLLECTION TUBE



REMARKS:
 1. THE INTERIOR OF THE TUBE IS COATED WITH SILICONE.
 2. CAN DO ACCORDING TO YOUR SPECIAL REQUEST AND PACKING.

Packing: 45.0x36.0x19.0cm, 47.5x38.5x21.5cm, 50.5x55.5x20.0cm, 100pcs/tray, 1200 pcs/ctn

ITEM	CODE	CAP COLOR	MATERIAL	ADDITIVE	TUBE SIZE	DRAW VOLUME
Plain Tube	MF6310R	Red	Glass	NO Additive	13 x 75	1 - 5ml
	MF6311R				13 x 100	5 - 7ml
	MF6312R				16 x 100	7 - 10ml
	MF6320R		PET		13 x 75	1 - 5ml
	MF6321R				13 x 100	5 - 7ml
	MF6322R				16 x 100	7 - 10ml
Serum Tube	MF6310O	Orange	Glass	Pro-coagulation Activator	13 x 75	1 - 5ml
	MF6311O				13 x 100	5 - 7ml
	MF6312O				16 x 100	7 - 10ml
	MF6320O		PET		13 x 75	1 - 5ml
	MF6321O				13 x 100	5 - 7ml
	MF6322O				16 x 100	7 - 10ml
EDTA Tube	MF6310L	Lavender	Glass	EDTA-K2 EDTA-K3	13 x 75	1 - 5ml
	MF6311L				13 x 100	5 - 7ml
	MF6312L				16 x 100	7 - 10ml
	MF6320L		PET		13 x 75	1 - 5ml
	MF6321L				13 x 100	5 - 7ml
	MF6322L				16 x 100	7 - 10ml
ESR Tube	MF6313K	Black	Glass	3.8% Sodium Citrate(1:4)	8 x 120	1.28ml
	MF6310K				13 x 75	1 - 5ml
	MF6311K				13 x 100	5 - 7ml
	MF6312K		PET		16 x 100	7 - 10ml
	MF6320K				13 x 75	1 - 5ml
	MF6321K				13 x 100	5 - 7ml
Citrate Tube	MF6310B	Blue	Glass	3.2% Sodium Citrate(1:9)	16 x 100	7 - 10ml
	MF6311B				13 x 100	5 - 7ml
	MF6312B				16 x 100	7 - 10ml
	MF6320B		PET		13 x 75	1 - 5ml
	MF6321B				13 x 100	5 - 7ml
	MF6322B				16 x 100	7 - 10ml
Glucose Tube	MF632018B	Grey	Glass	Sodium Fluoride + Potassium Oxalate or Sodium Fluoride + EDTA	13 x 75	1.8ml
	MF632027B				13 x 75	2.7ml
	MF6310H				13 x 75	1 - 5ml
	MF6311H		PET		13 x 100	5 - 7ml
	MF6312H				16 x 100	7 - 10ml
	MF6320H				13 x 75	1 - 5ml
Heparin Tube	MF6321H	Green	Glass	Sodium Heparin Lithium Heparin	13 x 100	5 - 7ml
	MF6322H				16 x 100	7 - 10ml
	MF6310G				PET	13 x 75
	MF6311G		13 x 100			5 - 7ml
	MF6312G		16 x 100			7 - 10ml
	SST Tube		MF6321G		Yellow	Glass
MF6322G		13 x 100	5 - 6ml			
MF6310Y		PET	16 x 100	7 - 8ml		
MF6311Y			13 x 75	1 - 4ml		
MF6312Y			13 x 100	5 - 6ml		
MF6320Y		16 x 100	7 - 8ml			
MF6321Y	13 x 75	1 - 4ml				
MF6322Y	13 x 100	5 - 6ml				
					16 x 100	7 - 8ml



PT TUBE (Double-deck)

MF632018B
13x75mm(Double-deck), 1.8ml, 3.2%sodium citrate, Blue cap

MF632027B
13x75mm(Double-deck), 2.7ml, 3.2%sodium citrate, Blue cap



NAME: PLAIN TUBE

1. There is no any additive(no anticoagulation) in the tube, which is also called no additive tube. Red closure
2. Specimen: Serum. The tube is used for clinical biochemistry and immunology.
3. Specs: 13x75mm; 13x100mm; 16x100mm.
4. Draw Volume: 3 - 10ml.
5. Storage temperature: 4 - 25°C.
6. Max. Vacuum degree tolerance: $\pm 10\%$.
7. Centrifuge for 5 - 10 minutes after blood coagulation.



NAME: PROCOAGULATION TUBE

1. The tube is coated with micronized particles as dot activator to accelerate clotting. Orange closure.
2. Specimen: Serum. It is used for serum determinations in chemistry, serology, and immunohematology.
3. Specs: 13x75mm; 13x100mm; 16x100mm.
4. Draw volume: 3 - 10ml.
5. Storage temperature: 4 - 25°C.
6. Max. Vacuum degree tolerance: $\pm 10\%$.
7. Invert the tube 6 - 8 times immediately after drawing to mix the blood and clot activator thoroughly.
8. Centrifuge for 5 - 10 minutes after 10 - 30 minutes coagulation.



NAME: EDTA TUBE

1. The tube is using EDTA K2 or EDTA K3 as additive. Lavender closure.
2. Specimen: Whole blood. It's used for hematology determinations.
3. Specs: 13x75mm; 16x100mm.
4. Draw volume: 1ml, 2 - 10ml.
5. Storage temperature: 4 - 25°C.
6. Max. Vacuum degree tolerance: $\pm 10\%$.
7. Invert the tube 6 - 8 times immediately after drawing

NAME: ESR TUBE

1. The tube is using 3.8%(0.129mol/L) Tri-Sodium Citrate as anticoagulation. Black closure.
2. Specimen: Whole blood. It's used for Westergren ESR(Erythrocyte Sedimentation Rate) test.
3. Specs: 13x75mm; 8x120mm(glass)
4. Draw volume: 1.6ml, 2.4ml; 1.28ml, 1.6ml.
5. Storage temperature: 4 - 25°C.
6. Max. Vacuum degree tolerance: $\pm 4\%$.
7. The mix ratio is 1 part citrate to 4 parts blood, and must draw required volume.
8. Invert the tube 6 - 8 times gently.



NAME: PT TUBE

1. The tube is using 3.2%(0.109mol/L) Tri-Sodium Citrate as anticoagulation. Blue closure.
2. Specimen: Whole blood or plasma. It's used for routine coagulation testing.
3. Specs: 13x75mm
4. Draw volume: 1.8ml, 2.7ml, 3.6ml
5. Storage temperature: 4 - 25°C.
6. Max. Vacuum degree tolerance: $\pm 4\%$.
7. The mix ratio is 1 part citrate to 9 parts blood, and must draw required volume.
8. Invert the tube 6 - 8 times gently.



NAME: GLUCOSE TUBE

1. The tube is using Sodium Fluoride and Potassium. Oxalate as additive. Grey closure.
2. Specimen: Plasma. It's used for glucose determinations.
3. Specs: 13x75mm
4. Draw volume: 2ml, 3ml
5. Storage temperature: 4 - 25°C.
6. Max. Vacuum degree tolerance: $\pm 10\%$.
7. Invert the tube 6 - 8 times gently.



NAME: HEPARIN TUBE

1. The tube is using Sodium Heparin or Lithium Heparin as additive. Green Closure.
 2. Specimen: Plasma. It's used for plasma determination in chemistry.
 3. Specs: 13x75mm; 13x100mm; 16x100mm
 4. Draw volume: 3 - 10ml
 5. Storage temperature: 4 - 25°C.
 6. Max. Vacuum degree tolerance: $\pm 10\%$.
- Draw required volume and invert the tube 6 - 8 times gently.



NAME: GEL&CLOT ACTIVATOR TUBE

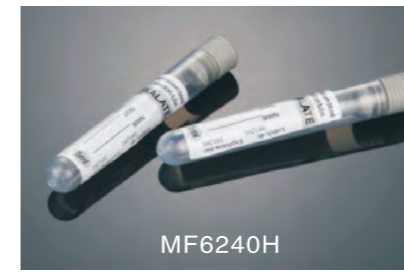
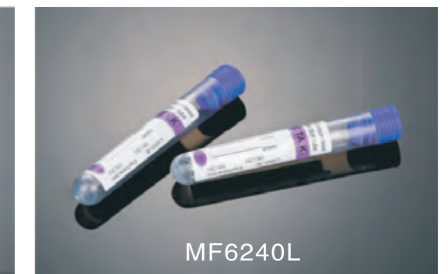
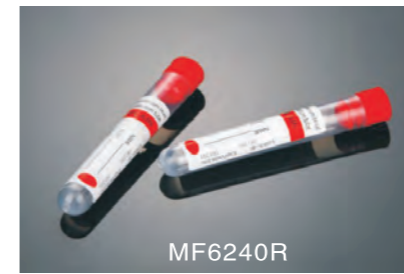
1. The interior of the tube is coated with dot activator(silica particles) to accelerate clotting. A barrier polymer-gel is present at the tube bottom, which will form a barrier separating serum from fibrin and cells during centrifugation. It can prevent substance exchange between cell and serum, guaranteeing biochemical character and chemical components of serum unchanged for a long time.
2. Specimen: Serum. It's used for serum determinations in chemistry.
3. Specs: 13x75mm; 13x100mm; 16x100mm
4. Draw volume: 3 - 9ml
5. Storage temperature: 4 - 25°C.
6. Max. Vacuum degree tolerance: $\pm 10\%$.
7. Invert tube for 5 - 8 times and centrifuge for 5 - 10 minutes at 1100 - 1500g after 10 - 30minutes' coagulation.





NON-VACUUMED BLOOD COLLECTION TUBE

CODE	TUBE NAME	CAP COLOR	TUBE SIZE(MM)	MATERIAL	ADDITIVE	DRAW VOLUME
MF6230R	PLAIN TUBE	RED	13X75	PP	NO ADDITIVE	3ML
MF6230O	PROCOAGULATION TUBE	RED/ORANGE	13X75	PP	CLOT ADDITIVE	2ML/3ML/4ML
MF6230L	EDTA TUBE	LAVENDER	13X75	PP	EDTA2,EDTA3	2ML/3ML/4ML
MF6230K	ESR TUBE	BLACK	13X75	PP	3.8% sodium citrate	1.6ML
MF6230B	PT TUBE	BLUE	13X75	PP	3.2% sodium citrate	1.8ML/2.7ML
MF6230H	GLUCOSE TUBE	GREY	13X75	PP	POTASSIUM OXALATE+SODIUM FLUORIDE	2ML/3ML
MF6230G	HEPARIN TUBE	GREEN	13X75	PP	SODIUM HEPARIN/LITHIUM HEPARIN	2ML/3ML/4ML
MF6230Y	GEL & CLOT ACTIVATOR TUBE	YELLOW	13X75	PP	GEL+CLOT ACTICATOR	2ML/3ML/4ML



NON-VACUUMED BLOOD COLLECTION TUBE

CODE	TUBE NAME	CAP COLOR	TUBE SIZE(MM)	MATERIAL	ADDITIVE	DRAW VOLUME
MF6240R	PLAIN TUBE	RED	13X75	PP	NO ADDITIVE	2ML/3ML/4ML
MF6240O	PROCOAGULATION TUBE	RED/ORANGE	13X75	PP	CLOT ADDITIVE	2ML/3ML/4ML
MF6240L	EDTA TUBE	LAVENDER	13X75	PP	EDTA2,EDTA3	2ML/3ML/4ML
MF6240H	GLUCOSE TUBE	GREY	13X75	PP	POTASSIUM OXALATE+SODIUM FLUORIDE	2ML/3ML
MF6240G	HEPARIN TUBE	GREEN	13X75	PP	SODIUM HEPARIN/LITHIUM HEPARIN	2ML/3ML/4ML
MF6240Y	GEL & CLOT ACTIVATOR TUBE	YELLOW	13X75	PP	GEL+CLOT ACTICATOR	2ML/3ML/4ML

MICRO BLOOD COLLECTION SYSTEM



ITEM NO.	VOLUME	ADDITIVE	QTY/PK	QTY/CS
MF614205L	0.25-0.5ml	EDTA-K2 /K3	500	6000
MF614005G	0.25-0.5ml	Heparin Lithium/Heparin Sodium	500	6000
MF614005R	0.25-0.5ml	Plain	500	6000
MF614005Y	0.25-0.5ml	Separation Gel	500	6000
MF615205L	0.25-0.5ml	EDTA-K2 /K3	500	6000
MF615005G	0.25-0.5ml	Heparin Lithium/Heparin Sodium	500	6000
MF615005R	0.25-0.5ml	Plain	500	6000
MF615005Y	0.25-0.5ml	Separation Gel	500	6000
MF616205L	0.25-0.5ml	EDTA-K2 /K3	1000	20000

MICRO BLOOD COLLECTION SYSTEM, FLAT BOTTOM



CODE	TUBE NAME	CAP COLOR	TUBE SIZE(MM)	MATERIAL	ADDITIVE	DRAW VOLUME
MF617025W	PLAIN TUBE	WHITE	15X45	PP	NO ADDITIVE	2.5ML
MF617225R MF617325R	EDTA TUBE	RED	15X45	PP	EDTAK2, EDTAK3	2.5ML
MF617025Y	GLUCOSE TUBE	YELLOW	15X45	PP	POTASSIUM OXALATE+SODIUM FLUORIDE	2.5ML
MF617025B	HEPARIN TUBE	BLUE	15X45	PP	SODIUM HEPARIN/LITHIUM HEPARIN	2.5ML

BLOOD COLLECTION NEEDLE



Multi-Sample Needle

The uniquely sharpened faceting simplifies penetration of tissue. In comparison with other common needles, painful trauma is considerably reduced. The specially sharpened point results in minimal tissue damage and thromboplastin seepage.

Code	Dsc.	Length	Color
MF6021 / MF6021S	21G	1"	Green
		1 1/4"	
		1 1/2"	
MF6022 / MF6022S	22G	1"	Black
		1 1/4"	
		1 1/2"	
MF6023 / MF6023S	23G	1"	Blue
		1 1/4"	
		1 1/2"	



Blood Collection Sets

Blood collection sets allows you to deliver exceptional patient care without compromising personal safety. This product is intended for blood collection and infusion procedures. It is a necessity for automatic blood collection in the future.

Code	Dsc.	Length	Color
MF5921/MF5921S	21G	3/4"	Green
MF5922/MF5922S	22G		Black
MF5923/MF5923S	23G		Blue



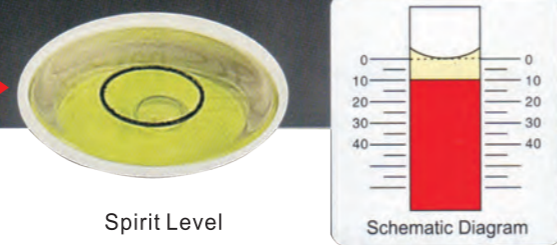
MF581001 Needle Holder

Needle Holder is used with collection needle. It helps to reduce the pain and ensure the safety when collecting the blood sample from patient. As the needle is fixed with needle holder, it will reduce the potential danger when the needle is used on the patient.

MF581002 Safety Needle Holder

The safety Needle Holder is an improved product of needle holder. It's safe and easy use. It helps to reduce the pain and ensure the safety when collecting the blood sample from patient.

MF55010 ESR FAST DETECTOR



Spirit Level

Schematic Diagram

Main Features:

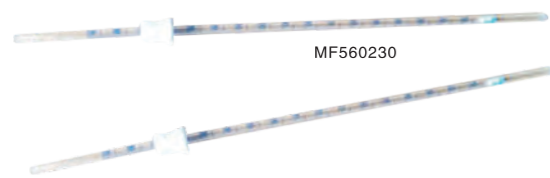
1. Better compatibility compared with Westergren method.
2. A safe, reliable and airtight operation during the whole process from blood collection to test, free of biological contamination.
3. Designed with spirit level of patent technology, which ensure the detector horizontal and acclinic.
4. 10 channels, synchronous operation allowed.
5. Only 30 minutes needed for reading, easy and fast.
6. Stainless steel soleplate silicagel cushion on, which will avoid any noise or breakage when the ESR tube being placed.

How to Use:

1. Carry out the venous blood collection according to standard requirements with 8 x 120mm ESR vacuum tube.
2. Immediately invert the tube at 180 degrees for 6 - 8times to achieve thorough mixing, which will avoid hemolysis, clotting or blood bubble.
3. At the room temperature of around 20 °C. vertically place the ESR tube containing blood sample onto the detector, note down the starting time and relevant numbers. Keep the detector still for 30 minutes and then read the millimeter of erythrocyte sedimentation.
4. Detailed reading method: Keep it stable for 30min, align the plasma concave in ESR tubes to the zero scare of the detector. Then, read the data by aligning the upper surface of erythrocyte to the scale on the detector. (See as the schematic diagram)

Notice:

1. Before operation, the EST fast detector should be put on a steady platform and adjustable to be horizontal with knobs below the soleplate.
2. The ESR tubes should be kept vertical during the whole sedimentation process, angle of inclination should not be more than 3 °C. Or else, the testing result will be of large deviation.
3. Keep the room temperature at 20±5°C, sedimentation time 30±2min.



MF560230



MF570010

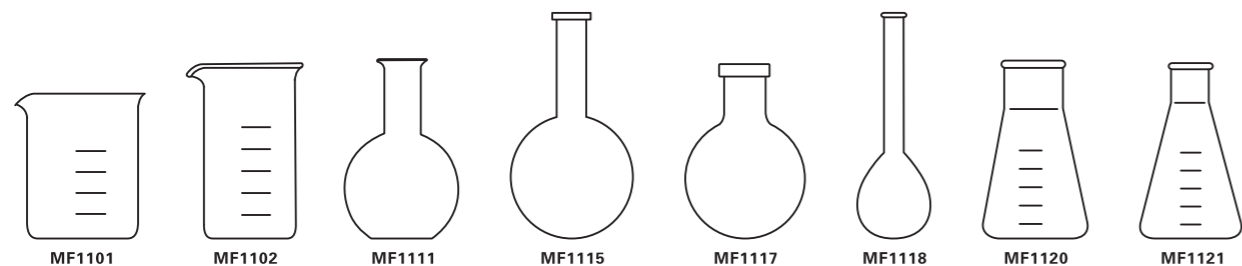
ESR TEST TUBE

MF560230 SPEC.: 230mm

ESR RACK

MF570010 SPEC.: 10-position





MF1101	Beaker, Low Form, with spout, with printed graduations	MF1102	Beaker, tall form, with spout, with printed graduations
--------	--	--------	---

Code	Capacity(ml)	O.D.(mm)	Height(mm)	Code	Capacity(ml)	O.D.(mm)	Height(mm)
MF11010050	50	42	60	MF11020050	50	40	67
MF11010100	100	51	70	MF11020100	100	45	88
MF11010150	150	60	80	MF11020150	150	53	100
MF11010200	200	65	88	MF11020250	250	60	122
MF11010250	250	70	95	MF11020400	400	70	138
MF11010300	300	75	102	MF11020600	600	80	165
MF11010400	400	80	110	MF11020800	800	90	178
MF11010500	500	87	118	MF11021000	1000	100	195
MF11010600	600	90	125	MF11022000	2000	120	240
MF11010800	800	100	135	MF11023000	3000	135	280
MF11011000	1000	106	145				
MF11012000	2000	132	185				
MF11013000	3000	150	210				

MF1111	Boiling Flask, flat bottom, long narrow neck	MF1115	Boiling Flask, round bottom, long neck
--------	--	--------	--

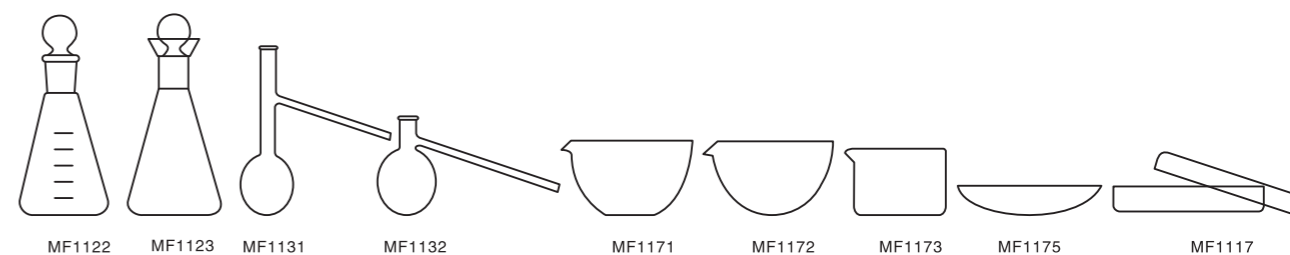
Code	Capacity (ml)	O.D. of neck (mm)	O.D. of Bulb (mm)	Height (mm)	Code	Capacity (ml)	O.D. of neck (mm)	O.D. of Bulb (mm)	Height (mm)
MF11110050	50	20	53	100	MF11150050	50	20	53	100
MF11110100	100	21	65	120	MF11150100	100	21	65	120
MF11110150	150	22	76	140	MF11150150	150	22	76	145
MF11110200	200	23	83	150	MF11150200	200	23	83	155
MF11110250	250	25	88	160	MF11150250	250	25	88	165
MF11110300	300	26	92	170	MF11150300	300	26	92	180
MF11110500	500	30	110	200	MF11150500	500	30	110	210
MF11111000	1000	35	140	250	MF11151000	1000	35	140	260
MF11112000	2000	50	166	250	MF11152000	2000	46	175	305
MF11113000	3000	50	185	295	MF11153000	3000	50	199	380
MF11115000	5000	50	223	330	MF11155000	5000	55	235	415

MF1117	Boiling Flask, Round bottom, short neck	MF1118	Nitrogen Flask, Round bottom, long neck
--------	---	--------	---

Code	Capacity (ml)	O.D. of neck (mm)	O.D. of Bulb (mm)	Height (mm)	Code	Capacity (ml)	O.D. of neck (mm)	O.D. of Bulb (mm)	Height (mm)
MF11170250	250	30	86	120	MF11180050	50	22	51	200
MF11170500	500	40	110	160	MF11180100	100	22	60	200
MF11171000	1000	45	140	200	MF11180250	250	34	81	270
MF11172000	2000	50	175	250	MF11180500	500	34	101	300
					MF11181000	1000	34	126	350

MF1120	Boiling Flask, conical, wide neck, with graduations	MF1121	Conical Flask, erlenmeyer, with graduations
--------	---	--------	---

Code	Capacity (ml)	O.D. of neck (mm)	O.D. of Bulb (mm)	Height (mm)	Code	Capacity (ml)	O.D. of neck (mm)	O.D. of Bulb (mm)	Height (mm)
MF11200050	50	34	51	85	MF11210050	50	22	51	85
MF11200100	100	34	64	105	MF11210100	100	22	64	105
MF11200200	200	50	79	131	MF11210150	150	28	71	120
MF11200250	250	50	85	140	MF11210200	200	34	77	132
MF11200300	300	50	87	156	MF11210250	250	34	87	140
MF11200500	500	50	105	175	MF11210300	300	34	89	153
MF11201000	1000	50	131	220	MF11210500	500	34	105	175
MF11202000	2000	72	153	275	MF11211000	1000	42	131	220
					MF11212000	2000	50	166	280



MF1122	Conical Flask, with ground-in glass stopper	MF1123	Iodine Flask, wide apout, with standard stopper
--------	---	--------	---

Code	Capacity (ml)	O.D. of Bulb (mm)	Height (mm)	Code	Capacity (ml)	O.D. of Bulb (mm)	Height (mm)
MF11220050	50	50	90	MF11230050	50	50	110
MF11220100	100	60	108	MF11230100	100	60	114
MF11220250	250	83	140	MF11230250	250	83	155
MF11220500	500	98	185	MF11230500	500	98	200
MF11221000	1000	130	230				

MF1131	Distilling Flask, with side tube	MF1132	Distilling Flask, church
--------	----------------------------------	--------	--------------------------

Code	Capacity (ml)	O.D. of neck (mm)	O.D. of Bulb (mm)	O.D. of side tube (mm)	Height (mm)	Code	Capacity (ml)	O.D. of neck (mm)	O.D. of Bulb (mm)	Height (mm)
MF11310125	125	23	70	7.5	190					
MF11310250	250	25	88	8	220					
MF11310500	500	30	100	9	270	MF11320300	300	22	86	131
MF11311000	1000	35	140	10	350	MF11320500	500	24	102	135
MF11312000	2000	46	175	12	410					

MF1171	Evaporating Dish, flat bottom, with spout	MF1172	Evaporating Dish, Round bottom, with spout
--------	---	--------	--

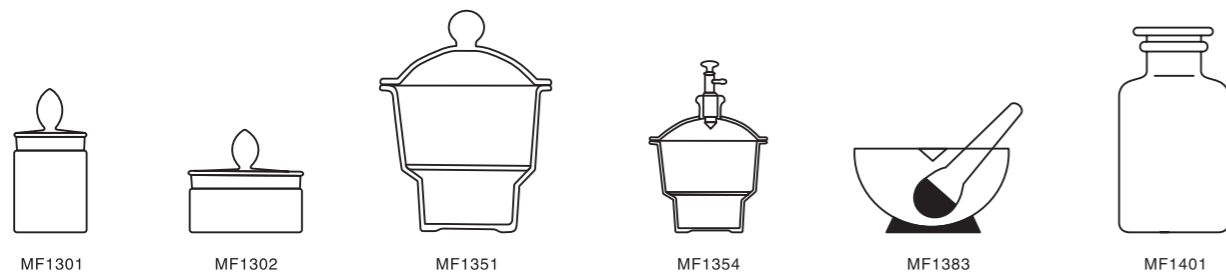
Code	O.D. of Top (mm)	Height (mm)	Code	O.D. of Top (mm)	Height (mm)
MF11710060	60	30	MF11720060	60	30
MF11710090	90	45	MF11720090	90	45
MF11710120	120	60	MF11720120	120	60
MF11710150	150	75	MF11720150	150	75

MF1173	Crystallizing Dish, with spout	MF1177	Petri culture dish
--------	--------------------------------	--------	--------------------

Code	O.D. (mm)	Height (mm)	Code	Cover Dia. (mm)	Bottom Dia. (mm)	Height (mm)
MF11730060	60	40	MF11770060	65	60	15
MF11730090	90	45	MF11770075	82	75	15
MF11730100	100	50	MF11770090	98	90	18
MF11730125	125	63	MF11770100	107	100	20
MF11730150	150	75	MF11770120	130	120	25
MF11730180	180	90	MF11770150	160	150	30

MF1175	Watch glass
--------	-------------

Code	MF11750045	MF11750060	MF11750070	MF11750080	MF11750090	MF11750100	MF11750120	MF11750150	MF11750180
Diameter (mm)	45	60	70	80	90	100	120	150	180



MF1301 Weighing Bottle, tall form			MF1302 Weight bottle, low form		
-----------------------------------	--	--	--------------------------------	--	--

Code	O.D. (mm)	Height (mm)	Code	O.D. (mm)	Height (mm)
MF13012525	25	25	MF13042025	40	25
MF13012540	25	40	MF13025030	50	30
MF13013050	30	50	MF13026030	60	30
MF13013060	30	60	MF13027035	70	35
MF13013570	35	70			
MF13014070	40	70			

MF1351 Desiccator, clear, with porcelain plate				MF1354 Vacuum desiccator, clear, with ground-in stopcock and porcelain plate			
--	--	--	--	--	--	--	--

Code	I.D. (mm)	Height of plate (mm)	Total Height (mm)	Code	I.D. (mm)	Height of plate (mm)	Total Height (mm)
MF13510100	100	60	165	MF13540150	150	90	220
MF13510150	150	90	220	MF13540180	180	100	280
MF13510180	180	100	280	MF13540210	210	110	320
MF13510210	210	110	320	MF13540240	240	120	360
MF13510240	240	120	360	MF13540300	300	140	450
MF13510300	300	140	450				

MF1383 Mortar, with glass pestle			MF1401 Reagent bottle, clear, narrow mouth, with ground-in glass stopper				
----------------------------------	--	--	--	--	--	--	--

Code	I. D. (mm)	Height (mm)	Code	Capacity (ml)	Dia. of bottle (mm)	Dia. of mouth (mm)	Height (mm)
MF13830060	60	40	MF14010030	30	40	18	76
MF13830075	75	40	MF14010060	60	45	22	85
MF13830090	90	50	MF14010125	125	57	24	110
MF13830120	120	60	MF14010250	250	70	27	135
MF13830150	150	85	MF14010500	500	85	33	172
MF13830180	180	96	MF14011000	1000	106	38	202
			MF14012500	2500	145	48	270
			MF14015000	5000	185	58	338
			MF14011001	10000	225	68	430
			MF14012001	20000	265	82	520



MF1402 Reagent bottle, amber, narrow mouth, with ground-in glass stopper					MF1403 Reagent bottle, clear, wide mouth, with ground-in glass stopper				
--	--	--	--	--	--	--	--	--	--

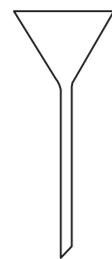
Code	Capacity (ml)	Dia. of bottle (mm)	Dia. of mouth (mm)	Height (mm)	Code	Capacity (ml)	Dia. of bottle (mm)	Dia. of mouth (mm)	Height (mm)
MF14020030	30	40	18	76	MF14030030	30	40	25	72
MF14020060	60	46	22	85	MF14030060	60	46	30	80
MF14020125	125	57	24	110	MF14030125	125	57	38	108
MF14020250	250	70	27	135	MF14030250	250	70	50	130
MF14020500	500	85	33	172	MF14030500	500	85	58	165
MF14021000	1000	106	38	202	MF14031000	1000	106	65	188
MF14022500	2500	145	48	270	MF14032500	2500	145	90	260
MF14025000	5000	185	58	338	MF14035000	5000	185	110	330

MF1404 Reagent bottle, amber, wide mouth, with ground-in glass stopper					MF1432 Filtering Flask, with side tubulature			
--	--	--	--	--	--	--	--	--

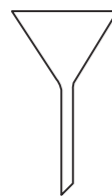
Code	Capacity (ml)	Dia. of bottle (mm)	Dia. of mouth (mm)	Height (mm)	Code	Capacity (ml)	O.D. of side tube (mm)	Height (mm)
MF14040030	30	40	25	72	MF14320125	125	9	120
MF14040060	60	46	30	80	MF14320250	250	9	160
MF14040125	125	57	38	108	MF14320500	500	9	210
MF14040250	250	70	50	130	MF14321000	1000	9	245
MF14040500	500	85	58	165	MF14322500	2500	11	290
MF14041000	1000	106	65	188	MF14325000	5000	11	370
MF14042500	2500	145	90	260				
MF14045000	5000	185	110	330				

MF1434 Filtering Flask, with tubulature at upper side and at bottom			
---	--	--	--

Code	Capacity (ml)	O.D. of side tube (mm)	Height (mm)
MF14340125	125	9	120
MF14340250	250	9	160
MF14340500	500	9	210
MF14341000	1000	9	245
MF14342500	2500	11	290
MF14345000	5000	11	370



MF1503



MF1504



MF1543



MF1544



MF1545

MF1503 Funnel 60° approx, long stem				MF1504 Funnel 60° approx, short stem			
Code	Diameter (mm)	O.D. of stem (mm)	Length (mm)	Code	Diameter (mm)	O.D. of stem (mm)	Length (mm)
MF15030050	50	7	150	MF15040040	40	7	50
MF15030060	60	8	150	MF15040050	50	7	50
MF15030075	75	9	150	MF15040060	60	8	60
MF15030090	90	11	150	MF15040075	75	9	75
				MF15040090	90	11	90
				MF15040100	100	13	100
				MF15040120	120	15	120
				MF15040150	150	17	150
				MF15040180	180	18	150
				MF15040210	210	21	160

MF1543 Separatory Funnel, pear shape, with ground-in stopper and stopcock				MF1544 Separatory Funnel, pear shape, with graduations, ground-in stopper and stopcock			
Code	Capacity (ml)	O.D. of stem x Length(mm)	Length (mm)	Code	Capacity (ml)	Graduation (mm)	O.D. of stem x Length(mm)
MF15430010	10	8x60	126	MF15440060	60	5	10x70
MF15430020	20	8x60	135	MF15440125	125	5	10x70
MF15430060	60	10x70	220	MF15440250	250	10	11x70
MF15430125	125	10x70	260	MF15440500	500	20	12x70
MF15430250	250	11x70	290	MF15441000	1000	50	12x70
MF15430500	500	12x70	330				
MF15431000	1000	12x70	400				

MF1545 Separatory Funnel, Cylindrical shape, with ground-in stopper and stopcock				
Code	Length (mm)	Capacity (ml)	O.D. of stem x Length(mm)	Length (mm)
MF15450060	220	60	9x80	260
MF15450125	260	125	9x80	320
MF15450250	290	250	10x110	360
MF15450500	330	500	10x110	420
MF15451000	400	1000	12x110	460



MF1546



MF1601



MF1603



MF1621A



MF1621B

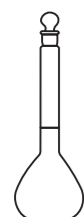


MF1622A

MF1546 Separatory Funnel, cylindrical shape, with graduations, ground-in stopper and stopcock					MF1601 Measuring Cylinder with spot			
Code	Capacity (ml)	Graduation (ml)	O.D. of stem x Length(mm)	Length (mm)	Code	Capacity (ml)	Graduation (ml)	Height (mm)
MF15460060	60	2	9x80	260	MF16010005	5	0.1	110
MF15460125	125	5	9x80	320	MF16010010	10	0.2	135
MF15460250	250	5	10x110	360	MF16010025	25	0.5	160
MF15460500	500	10	10x110	420	MF16010050	50	1	195
MF15461000	1000	25	12x110	460	MF16010100	100	1	250
					MF16010250	250	2.5	300
					MF16010500	500	5	350
					MF16011000	1000	10	430
					MF16102000	2000	20	500

MF1603 Measuring Cylinder, with graduations and ground-in stopper					MF1621A Volumetric Flask, grade A, with ground-in glass stopper or plastic stopper				
Code	Capacity (ml)	Graduation (ml)	Capacity tolerance(±ml)	Height (mm)	Code	Capacity (ml)	Ground mouth(ml)	Capacity tolerance(±ml)	Height (mm)
MF16030010	10	0.2	0.1	150	MF16210005A	5	7/11	0.02	74
MF16030025	25	0.5	0.25	150	MF16210010A	10	7/11	0.02	90
MF16030050	50	1	0.25	215	MF16120025A	25	10/13	0.03	110
MF16030100	100	1	0.5	270	MF16210050A	50	10/13	0.05	140
MF16030250	250	2.5	1	320	MF16210100A	100	12/14	0.1	170
MF16030500	500	5	2.5	380	MF16210200A	200	14/15	0.15	210
MF16031000	1000	10	5	460	MF16210250A	250	14/15	0.15	220
MF16032000	2000	20	10	530	MF16210500A	500	16/16	0.25	260
					MF16211000A	1000	19/17	0.4	310
					MF16212000A	2000	24/20	0.6	370

MF1621B Volumetric Flask, grade B, with ground-in glass stopper or plastic stopper					MF1622A Volumetric Flask, grade A, with ground-in glass stopper or plastic stopper				
Code	Capacity (ml)	Capacity tolerance(±ml)	Ground mouth(ml)	Height (mm)	Code	Capacity (ml)	Ground mouth(ml)	Capacity tolerance(±ml)	Height (mm)
MF16210005B	5	0.04	7/11	74	MF16220005A	5	7/11	0.02	74
MF16210010B	10	0.04	7/11	90	MF16220010A	10	7/11	0.02	90
MF16210025B	25	0.06	10/13	110	MF16220025A	25	10/13	0.03	110
MF16210050B	50	0.1	10/13	140	MF16220050A	50	10/13	0.05	140
MF16210100B	100	0.2	12/14	170	MF16220100A	100	12/14	0.1	170
MF16210200B	200	0.3	14/15	210	MF16220200A	200	14/15	0.15	210
MF16210250B	250	0.3	14/15	220	MF16220250A	250	14/15	0.15	220
MF16210500B	500	0.5	16/16	260	MF16220500A	500	16/16	0.25	260
MF16211000B	1000	0.8	19/17	310	MF16221000A	1000	19/17	0.4	310
MF16212000B	2000	1.2	24/20	370	MF16222000A	2000	24/20	0.6	370



MF1622B



MF5001



MF5002



MF5007



MF5009



MF5010

MF1622B					MF5001				
Volumetric Flask, amber, grade B, with ground-in glass stopper or plastic stopper					Boiling Flask, round bottom, short neck, standard ground mouth				
Code	Capacity (ml)	Capacity tolerance(±ml)	Ground mouth(ml)	Height (mm)	Code	Capacity (ml)	Ground mouth	O.D of bulb (mm)	Height (mm)
MF16220005B	5	0.04	7/11	74	MF50010005	5	10/19	27	56
MF16220010B	10	0.04	7/11	90	MF50010010	10	10/19	33	66
MF16220025B	25	0.06	10/13	110	MF50010025	25	10/19	41	70
MF16220050B	50	0.1	10/13	140	MF50010050	50	29/32	53	105
MF16220100B	100	0.2	12/14	170	MF50010100	100	29/32	65	117
MF16220200B	200	0.3	14/15	210	MF50010150	200	24/29	76	120
MF16220250B	250	0.3	14/15	220	MF50010250	250	29/32	88	145
MF16220500B	500	0.5	16/16	260	MF50010500	500	29/32	110	167
MF16221000A	1000	0.8	19/17	310	MF50011000	1000	29/32	140	199
MF16222000A	2000	1.2	24/20	370	MF50012000	2000	29/32	175	234
					MF50013000	3000	29/32	199	281
					MF50015000	5000	50/42	235	337

MF5002					MF5009				
Boiling Flask, round bottom, long neck, standard ground mouth					Conical Flask, standard ground mouth				
Code	Capacity (ml)	Ground mouth	O.D of bulb (mm)	Height (mm)	Code	Capacity (ml)	Ground mouth	O.D of bottle (mm)	Height (mm)
MF50020050	50	24/29	53	130	MF50090005	5	10/19	25	50
MF50020100	100	24/29	65	145	MF50090010	10	10/19	32	60
MF50020250	250	29/32	88	165	MF50090025	25	10/19	42	65
MF50020500	500	29/32	110	210	MF50090050	50	24/29	51	90
MF50021000	1000	29/32	140	250	MF50090100	100	24/29	64	105
MF50022000	2000	29/32	175	310	MF50090150	150	24/29	71	115
MF50023000	3000	40/38	199	360	MF50090250	250	29/32	85	128
MF50025000	5000	50/42	235	380	MF50090500	500	29/32	105	165
					MF50091000	1000	29/32	131	210
					MF50092000	2000	29/32	166	275

MF5007					MF5010				
Boiling Flask, round bottom, short neck, standard ground mouth					Filtering Flask, standard ground mouth				
Code	Capacity (ml)	Ground mouth	O.D of bulb (mm)	Height (mm)	Code	Capacity (ml)	Ground mouth	O.D of bulb (mm)	Height (mm)
MF50070025	25	14/23	41	70	MF50100010	10	10/19	32	60
MF50070050	50	19/26	53	94	MF50100025	25	10/19	42	70
MF50070100	100	19/26	65	106	MF50100050	50	19/26	51	85
MF50070150	150	19/26	76	117	MF50100100	100	19/26	64	105
MF50070250	250	19/26	88	134	MF50100250	250	29/32	85	135
MF50070500	500	29/32	110	167	MF50100500	500	29/32	105	170
MF50071000	1000	29/32	140	199	MF50101000	1000	29/32	131	210
MF50072000	2000	29/32	175	234					
MF50075000	5000	34/35	235	320					

MF5411 MINI CENTRIFUGE

Max. Speed	7000rpm
Max. RCF	2680×g
Rotor Capacity	0.2/0.5/1.5/2.0mL×8; 0.2mL×16 PCR strips or 0.2mL×2 PCR 8 strips
Run Time	Continuous operation
Driving Motor	DC motor
Power	AC110-240V/50Hz/60Hz 20W
Noise Level	≤45dB
Dimension [D×W×H]	160x170x122mm
Weight	0.5kg



MF5410 CENTRIFUGE

Max. Speed:	4000r/min
Max. RCF:	1800 X g
RBC Whing Rotor:	12x7ml, 4000rpm, RCF 1800xg
WBC Whing Rotor:	12x2ml, 4000rpm, RCF 1800xg 12x1.5ml 4000rpm, RCF 1800xg 12x0.5ml, 4000rpm, RCF 1800xg
Timer:	Programmable
Motor:	Brushless Motor
Power:	AC 220V, 50/60Hz, 3A
Weight:	22kg
Dimension:	430x346x260mm



MF5402 CENTRIFUGE

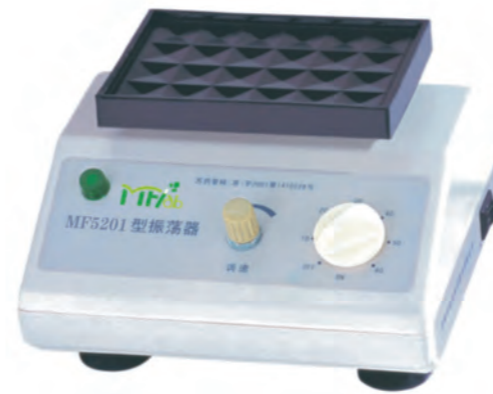
Main power:	220V±10%, 50Hz
Max. Speed:	4000r/min
Max. RCF:	2130 X g
Type of Rotor:	Fixed angle rotor 45°
Power Input:	80Va
Power Output:	40W
Capacity:	20ml x 12
Time range:	0 - 30min
Weight:	12kg
Dimensions:	280(w)x333(d)x270(h)mm
Regulation:	Step



MF5403 Centrifuge



Main power: 220V±10%, 50Hz
 Max. Speed: 12000r/min
 Max. RCF: 15300 X g
 Type of Rotor: Swing-out
 Power Input: 230Va
 Power Output: 100W
 Capacity: 24pcs capillary Φ1.5mm
 Starting time: < 1min
 Braking time: < 2min
 Time range: 0 - 10min
 Weight: 11.5kg
 Dimensions: 270(w)x310(d)x280(h)mm
 Regulation: Step (11000r/min, 12000r/min)



MF5201 Microplate shaker(mini-shaker)

Use the silicone tray, which can be used for different culture plates, micro-plate oscillating simultaneously with high effectiveness and speed adjustable. It is the successor to the old products.
 Packing quantity: 2 sets/package
 Packing Measurement: 29x28x44cm



Centrifuge

MF5404
MF5405
MF5408
MF5409



Centrifuge

MF5406
MF5407



15ml X 8

10ml X 16

15ml X 12

MF5202 Microplate shaker(mini-shaker)

Operation Method:
 Ration: 360°clockwise, 360°anticlockwise, 360°clockwise-anticlockwise cross
 Shaking: Forward - backward reciprocating action with <5°angle
 Vortex: Forward - backward reciprocating action with <5°angle + 360°clockwise rotation.
 Mate data:
 Voltage: AC 200V±10%, 50/60Hz
 Input power: 15W
 Speed range: 5 - 40rpm
 Working plate 1: 1.5ml - 15ml test tube or centrifuge tube 22pcs
 Working plate 2: 50ml centrifuge tube 6pcs, 1.5 -15ml test tube or centrifuge tube 4pcs
 Max. Working time: 60h
 Permissible relative moisture: 5 - 50℃
 External dimension: 380x182x190mm



MODEL	MF5404 MF5405	MF5408 MF5409	MF5406 MF5407
Power supply	220V ± 10% 50HZ		
Max speed	5000RPM	4000RPM	
Max RCF	3130 × g	2000 × g	
Type rotor	Fixed angle rotor45°		
Power input	100VA		
Power output	70W		
Capacity	15ml × 8, 10ml × 16		
Time range	0~99min	0~30min	
Net weight	13kg		
Dimension	310(W) × 340(D) × 265(H)mm		
Regulation	Stepless indication		

All models can fix 15ml x 8 rotor, MF5406, MF5404, MF5409, Use brushless motor
 MF5404, MF5409, is digital display
 MF5404, MF5409, are very precise in speed control, especially suitable for thrombocyte analyze(500RPM required).



MF5203 Heating Mantel

Specification	MF5203		
Model (ml)	250	550	1000
Voltage (v)	220	220	220
Maximum temperature (℃)	0-380	0-380	0-380
power (w)	150	200	300
Working Hours	Continue		
Packing Size (4pcs/ctn)	230x220x190mm	230x220x190mm	280x280x300mm



MF5204 Blood Roller Mixer

The product is used for mixing and blending of the blood, powder reagents total blood control materials in the anticoagulation tube or bottle. According to different requirements, it can be rolling mixing, anticlockwise rolling and speed adjustable. It is an ideal instrument for clinical lab.

Mental or Plastic cover
Main technical Data
Operation Method: Roll + swing
Swing angle: 22mm±1mm
Rating speed: 20 - 80rpm
Max. Loading weight: 1.5kg
Running mode: Constant
Input voltage(Frequency): AC220V±10%(50/60HZ)
Permissible relative moisture: 80%
Output power: 10W
Roll Length: 236mm
Permissible ambient temperature: 5 - 50°C
Dimensions: 410x270x100mm
Net. Weight: 4.5kg

MF5205 Mixer

Lighting: Matrix LED
Digital Display: 3 digits
Counting Range: 0 - 999
Compatible petri dish: 50 - 90mm
Input Voltage(Frequency): AC 100 - 240V(50/60Hz)
Input Power: 20W
Magnification: 3 - 9times
Permissible ambient temperature: 5 - 50°C
Dimensions: 225x210x160mm
Net. Weight: 2.2kg



MF5206 Mixer

Lighting: Matrix LED
Digital Display: 3 digits
Counting range: 0 - 999
Compatible petri dish: 50 - 150mm
Input Voltage(Frequency): AC100-240V(50/60Hz)
Input Power: 40W
Magnification: 3 - 9times
Permissible ambient temperature: 5 - 50°C
Dimensions: 360x300x180mm
Net. Weight: 4.0kg

MF5207 Blood Rotator Mixer

Technical Data	MF5207A	MF5207B
Operation Method	360° reverse rotation	360° reverse rotation
Tilt angle of the plate	38°	38°
Speed range	6 - 32rpm	5 - 35rpm
Timing range	/	0-999min
Clip qty	Large size: 12pcs Medium size: 24pcs Small size: 24pcs	Large size: 12pcs Medium size: 24pcs Small size: 24pcs
Running mode	Continuous	Timing/Continuous
Plate diameter	Φ300mm	Φ300mm
Input voltage(Frequency)	AC 100-240V(50/60Hz)	AC 100-240V(50/60Hz)
Input power	10W	10W
Protective class	IP31	IP31
Permissible ambient temperature	5 - 50°C	5 - 50°C
Permissible relative moisture:	80%	80%
Dimensions:	310x300x420mm	310x300x420mm
Net. Weight:	4.3kg	4.0kg



MF5207A



MF5207B

LED backlight display

MF5208 Vortex Mixer

Voltage: AC 220V±10%, 50/60Hz
Power Rating: 30W
Working Method: Continuous, Inching, Speed adjustable
Rating speed: 1000 - 2800rpm
Working Plate: Bowl shape, disc shape
External Dimension: 180x120x180mm
Net Weight: 4.5kg



MF5209 Oscillator (powder mixer)

It's of compact design and no noise, 19 different kinds of bottles can be put in at one time and easy for operation, which can be use for mixing of the medicine powders that is not mixed by normal ways for avoiding the waste of the medicine. It's a good hand for the medical person in hospitals.

Circling diameter: 3.4mm/4mm
Rating speed: 1000rpm/1200rpm
Running mode: Continuous
Input Voltage: AC220V±10%, 50/60Hz
Output power: 12W/24W
External Dimension: 235X160X160mm
Net Weight: 2.3kg





MF5210
Multi-Purpose oscillator

Input Voltage: AC 220V±10%, 50/60Hz
 Output power: 10W
 Rating speed: 200 - 2800rpm
 Circling diameter: 4mm
 Running mode: Continuous
 Max. Loading: 15pcs 50ml centrifuge tubes
 External Dimension: 260x200x260mm
 Net Weight: 2.2kg



MF5211
Oscillator

Input Voltage: AC 220V±10%, 50/60Hz
 Output power: 10W
 Rating speed: 200 - 2800rpm
 Circling diameter: 9mm
 Running mode: Timing/Continuous
 Max. Loading: 6pcs microplate
 External Dimension: 310x280x225mm
 Net Weight: 6.2kg



MF5212
Oscillator(Horizontal Rotor)

Input Voltage: AC 220V±10%, 50/60Hz
 Output power: 10W
 Rating speed: 20 - 230rpm
 Circling diameter: 22mm
 Running mode: Timing/ Continuous
 Working Size: 224x152mm
 External Dimension: 260x165x120mm
 Net Weight: 2.5kg



MF5214
LCD Digital Timing Clock

Working Temperature: -5°C ~ +50°C
 Relative humidity: < 80%
 Timing Group: 15 groups
 Time Accuracy: daily error < 3s
 Voltage: AC 110 -240V, 50/60Hz

MF5215
Hemocytometer

The instrument is a decimal scale hemocytometer of 10 groups of 2 digital. It shows 10 groups of numbers and totals with the quality of reliability and compact design. Especially applicable to the middle size and small size hospitals.

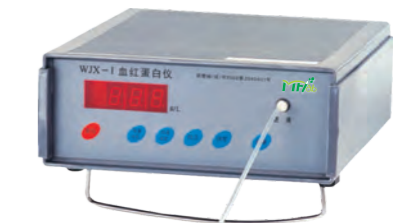
Main data:
 Voltage: AC 100 - 240V, 50/60Hz
 Power Rating: 5W
 Max. Count category: 10 groups
 Count capacity of every group: 0 -99
 External dimension: 220x166x78mm



MF5216
Hemoglobinometer

The product is assembled with the micro-computer with the characters of intelligence, inletting adjustable, easy for operation and accurate testing as well as the function stability. It's and ideal successor to the simple old hemoglobinometers.

Packing Quantity: 4sets/package
 Packing Measurement: 61x33x38cm



MF5217
Colonometer

Digital display: 3 digits
 Lighting: Matrix LED
 Input Voltage: AC 100-240V, 50/60Hz
 Input power: 20W
 Counting range: 0-999
 Compatible petri dish: 50 - 90mm
 Dimensions: 255x210x160mm
 Net Weight: 2.2kg



MF5217-2
Colonometer

Digital display: 3 digits
 Lighting: Matrix LED
 Input Voltage: AC 100-240V, 50/60Hz
 Input power: 40W
 Counting range: 0-999
 Compatible petri dish: 50 - 150mm
 Dimensions: 360x300x180mm
 Net Weight: 4.0kg



MF5218 Decapper for vacuum blood collection tube



Decapper for vacuum blood collection tube
Main data:
Voltage: AC 200V±10%, 50/60Hz
Power rating: 45W
Opening Speed: 60pcs/min
Tube rack: 24 wells/rack
Tube Size: 13x75mm, 13x100mm
External dimension: 420x250x200mm

MF5218-2 BY Rocking Mixer

It's a machine which swing up and down with little swing amplitude. Frequency adjustable, It's used for fixing running gel spectral band, rocking of coomassie blue and decolorization and fixing of silver nitrate staining, etc. It's used for development and fixation of X-Ray film, further treatment cellulose membrane after electrophoretic migration, molecular hybridization, cell culture and blood mixing.



Main Technical Data:
Rocking Speed: 15r/m
Rocking Angle: ±25°
Working plate size: 252x170mm
External dimension: 346x196x95mm
Voltage: 220V±10%, 50/60Hz
Power rating: 6W
N. W. : 2.5kg

MF5219 3D Rotation Mixer

The kind of mixer with three-dimensional motion provides gentle and thorough mixing. It's ideal for sample mixing in centrifuge tubes, as well as resuspension of large, fragile DNA Fragments. The MF5219 Accommodates most size tube, centrifuge tube, microwell plate, petri dishes and tissue culture plate and cell culture bottle. This equipment is suitable to work in the incubator or cold room.



Main Technical Data:
Voltage: AC 220V±10%, 50/60Hz
Power Rating: 6W
Type of movement: 3D
Angle: 20°
Maximum load Capacity: 0.8kg
External Dimension: 240x170x150mm

MF5220 Digital Shaking Rotator

- Features:
1. With different types of fixing clips, It can carry out the mixing and shaking for vessels of different shape and size.
 2. Two operation methods for choice: Circling and reciprocating(Inverse direction also can be customized).
 3. Compact structure. With BLDGC(Brushless DC Motor), the equipment can run smoothly with little noise for long period.
 4. LCD with backlight can display the current speed, time and operation mode, convenient for reading and setting.
 5. Precise digital time and speed setting can easily carry out the continuous operation mode.
 6. Safe operating protection function adopted.
 7. PC connection through RS232 interface.
Particular software, PC Lab can easily realize equipment controlling and recording on PC.
 8. Maximum load reaches 7.5kg
 9. Accessories are not included, please order separately



Accessories: Flatbed working plate(with silicagel pad)

Technical Data:

Operation Method:	Circling and reciprocating	Operation mode:	Timing/Continuous
Shaker Diameter:	10mm	Shaking table lock:	Yes
Maximum loading weight(Incl. Fixing clips):	7.5kg	Dimensions(WxHxD):	420X360X100mm
Equipment input power:	35W	Weight:	13kg
Motor output power:	10W	Permissible ambient temperature:	5 - 50°C
Motor Type:	BLDC	Permissible relative moisture:	80%
Speed range:	100 -500rpm	Protection class according to DIN EN60529:	IP21
Speed display:	LCD	RS 232 Interface:	yes
Timer display:	LCD	Analog output:	Yes
Time setting range:	1 - 19h59min	Voltage:	220 - 240V/100-120V
		Frequency:	50/60Hz

MF5221 Digital Shaking Rotator

- Accessories:
1. Working plate of four-jaw chuck
 2. Fixing clip for 25ml conical beaker
 3. Fixing clip for 50ml conical beaker
 4. Fixing clip for 100ml conical beaker
 5. Fixing clip for 200/250ml conical beaker
 6. Fixing clip for 500ml conical beaker



MF5222 Digital Shaking Rotator

- Accessories:
Working plate with beam barrel clamp.
(With silicagel pad and 8 beam barrels, quantities optional).



MF5224
Spectrophotometer



Features:

1. Microprocessor Controlled.
2. Data Output.
3. Four Display Mode.
4. Grating Monochromator.
5. Compact design, easy to carry.

Optical System	Single Beam, Grating 1200lines/mm
Wavelength Range	325 - 1000nm
Spectral Bandwidth	4nm
Wavelength Accuracy	±2nm
Wavelength Repeatability	1nm
Photometric Accuracy	±0.5% T
Photometric Repeatability	0.3% T
Photometric Mode	T, A, C, F
Stray Light	≤ 0.2%T
Stability	±0.002A/h @500nm
Display	±0.002A/h @500nm
Detector	LCD
Output	Silicone Photodiode
Light Source	USB port & Parallel Port (printer)
Power Requirements	Tungsten Halogen Lamp
Dimension	42x28x18cm
Weight	8kg

Stainless-Steel Electric-Heating Distilling Apparatus

Common Model

- MF5228-5
- MF5228-10
- MF5228-20



Performance and characteristic:

1. All of products are made from stainless steel.
2. Condenser is made of seamless stainless-steel pipes and so with very good cooling effects & great capacity of water produce.
3. The cooled water returning to the vaporizing drum can save energy and water.
4. Drain valve can push the water in container, prevent bilge.
5. Immerge electric heating tube made from copper, heat efficiency is better.

Model	Electric Supply	Power	Water discharge	Product Size(Paper)cm
MF5228-5	220V/50Hz	4.5kW	≥5L/h	35x34x78
MF5228-10	380V/50Hz	7.5kW	≥10L/h	42x38x90
MF5228-20	380V/50Hz	15kW	≥20L/h	51x36x80



Stainless-Steel Electric-Heating Distilling Apparatus

Cuts off the water supply automatic control

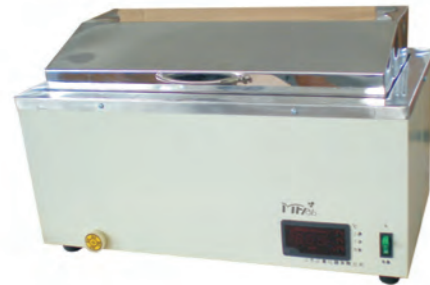
- MF5228-5Z
- MF5228-10Z
- MF5228-20Z

Performance and characteristic:

1. All of products are made from stainless steel.
2. Condenser is made of seamless stainless-steel pipes and so with very good cooling effects & great capacity of water produce.
3. The cooled water returning to the vaporizing drum can save energy and water.
4. Drain valve can push the water in container, prevent bilge. When lack water, wil auto stop heating, when the return water reach the normal level, then continue heating.
5. Immerge electric heating tube made from copper, heat efficiency is better.

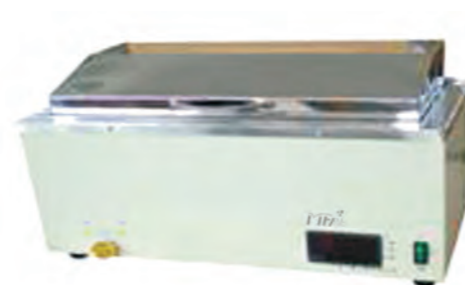
Model	Electric Supply	Power	Water discharge	Product Size(Paper)cm
MF5228-5Z	220V/50Hz	4.5kW	≥5L/h	35x34x78
MF5228-10Z	380V/50Hz	7.5kW	≥10L/h	42x38x90
MF5228-20Z	380V/50Hz	15kW	≥20L/h	51x36x80

Water Bath



MF5229

Temperature Range: RT +5°C ~ 100°C
 Temperature fluctuation: $\leq \pm 1^\circ\text{C}$ with a lid
 Stainless steel interior
 Heat power: 1000W
 Working size: 400x180x130mm
 Packing size: 520x330x320mm
 G.W.: 7.0kg N.W.: 6.0kg



MF5230

Temperature Range: RT +5°C ~ 100°C
 Temperature fluctuation: $\leq \pm 1^\circ\text{C}$
 Stainless steel interior
 Heat power: 1500W
 Working size: 400x180x130mm
 Packing size: 720x420x350mm
 G.W.: 12kg N.W.: 10kg



MF5231

Temperature Range: RT +5°C ~ 95°C
 Temperature fluctuation: $\leq \pm 1^\circ\text{C}$
 Stainless steel interior
 Heat power: 300W
 Working size: 160x160x120mm
 Packing size: 280x280x280mm
 H.W.: 4kg N.W.: 3.5kg



MF5232

Temperature Range: RT +5°C ~ 95°C
 Temperature fluctuation: $\leq \pm 1^\circ\text{C}$
 Stainless steel interior
 Heat power: 500W
 Working size: 300x160x120mm
 Packing size: 410x260x260mm
 G.W.: 5.5kg N.W.: 4.5kg



MF5233

Temperature Range: RT +5°C ~ 95°C
 Temperature fluctuation: $\leq \pm 1^\circ\text{C}$
 Stainless steel interior
 Heat power: 1000w
 Working size: 300x300x120mm
 Packing size: 430x410x280mm
 G.W.: 6kg N.W.: 5.5kg



MF5234

Temperature Range: RT +5°C ~ 95°C
 Temperature fluctuation: $\leq \pm 1^\circ\text{C}$
 Stainless steel interior
 Heat power: 1500W
 Working size: 470x300x120mm
 Packing size: 630x430x260mm
 G.W.: 8.5kg N.W.: 7.5kg



MF5235

Temperature Range: RT +5°C ~ 95°C
 Temperature fluctuation: $\leq \pm 1^\circ\text{C}$
 Stainless steel interior
 Heat power: 2000W
 Working size: 600x300x120mm
 Packing size: 750x440x280mm
 G.W.: 10.0kg N.W.: 9.0kg

MF5236

Digital Oil Bath

Temperature Range: RT +5°C ~ 300°C
 Temperature fluctuation: $\leq \pm 2^\circ\text{C}$
 Stainless steel interior
 Heat power: 500W
 Working size: 160x160x120mm
 Packing size: 360x280x280mm
 G.W.: 5.5kg N.W.: 4.8kg



MF5237

Digital Oil Bath

Temperature Range: RT +5°C ~ 300°C
 Temperature fluctuation: $\leq \pm 2^\circ\text{C}$
 Stainless steel interior
 Heat power: 1000W
 Working size: 360x160x120mm
 Packing size: 510x280x280mm
 G.W.: 7.0kg N.W.: 6.0kg



MF5238

Desktop Electric Boiling Sterilizer

Temperature Range: RT -100°C
 Power Supply: 220V 50Hz
 Timer: 0 - 120min
 Heat power: 1500W
 Working size: 420x150x100mm
 Packing size: 540x330x320mm
 G.W.: 8.0kg N.W.: 7.0kg



MF5239

Desktop Electric Boiling Sterilizer

Temperature Range: RT -100°C
 Power Supply: 220V 50Hz
 Timer: 0 - 120min
 Heat power: 1000W
 Working size: 320x160x95mm
 Packing size: 440x310x320mm
 G.W.: 7.0kg N.W.: 6.0kg



MF5240

Low-temperature Stable Temperature Tank

Temperature Range: RT -10°C ~ 99°C
 Temperature fluctuation: $\leq \pm 1^\circ\text{C}$
 Stainless steel interior
 Heat power: 1500W
 Working size: 300x260x220mm
 Packing size: 580x520x910mm
 G.W.: 58.0kg N.W.: 40.0kg





MF5241
Magnetic Hot Plate

Speed range:
Start up-1600rpm,
Stepless adjust speed
Motor Power: 25W
Heating Power: 150W
Blend Liquor: 100 - 1000ml



MF5242
Stable Temperature
Magnetic Stirrer

Speed range:
Start up-1600rpm,
Stepless adjust speed
Motor Power: 25W
Heating Power: 150W
Temperature Range: RT -100°C
Digital display temperature



MF5243
Magnetic Heater Stirrer

Power: 40W
Heating Power: 300W
Temperature Range: RT -200°C
Speed Range: 40 ~1600rpm, stepless adjust speed
Time setting range: 0.1 - 99.9h
Touch panel digital display temperature, speed and time.
It with timer and data keep function, the max time is 99.9h



MF5244
Stirring Hot Plate

Speed Range: Start up-1600rpm, Stepless adjust speed
Motor power: 25W x 4
Heating Power: 150W x 4
Blend Liquor: 100 - 1000ml
Heating Surface: φ120mm aluminum



MF5245
Mixer/Homogeniser

Motor Speed: 20000rpm
Big Homogenate knife: 8000-18000rpm
Small homogenate knife: 8000-20000rpm
Continuum working time: ≤5min
Power: 185W
Working Capacity(ml): 5ml, 10ml, 5ml, 20ml



FYL3101
Portable Pressure Steam Sterilizer

Characteristics:
1. Fully stainless steel structure.
2. Double scale indication pressure gauge.
3. Electric Heated.
4. Easy to operate, safe and reliable



FYL5101
Vertical Pressure Steam Sterilizer

Characteristics:
1. Fully stainless steel structure.
2. Hand wheel type of quick-open door structure.
3. Door safety lock system.
4. Automatically controlled by computer.
5. Digital display of working status, touch of key.
6. Over temperature & over pressure auto-protection.
7. Steam-water inner circulation system: no steam discharge, and the environment for sterilizing will be clean and dry.
8. Self-inflating type seal.
9. Safe protection of water lacking.
10. The drying system is optional, which can be equipped according to the customers' request.
11. Automatically shut off with beep reminding after sterilization.
12. With two stainless steel sterilizing baskets.



FYL4101
Vertical pressure steam sterilizer

Characteristics:
1. Fully stainless steel structure.
2. Hand wheel type of quick-open door structure.
3. Door safety lock system.
4. Automatically controlled by computer.
5. Digital display of working status, touch of key.
6. Over temperature & over pressure auto-protection.
7. Steam-water inner circulation system: no steam discharge, and the environment for sterilizing will be clean and dry.
8. Self-inflating type seal.
9. Safe protection of water lacking.
10. The drying system is optional, which can be equipped according to the customers' request.
11. Automatically shut off with beep reminding after sterilization.
12. With two stainless steel sterilizing baskets.



FYL6101
Horizontal Cylindrical Pressure
Steam Sterilizer

Characteristics:
1. Sterilizing course automatic sterilization controlled, easy to operate.
2. With drying function, suitable dressing drying.
3. With over-temperature, over-Pressure auto-protect device.
4. The door opening mechanism cannot be operated until the pressure in the chamber is reduced to 0.027MPa. It can't be start on if the door doesn't close well.
5. The safety valve will be open automatically when the inner pressure over 0.24MPa, and the steam be exhausting to the water tank.
6. The power will be cut-off automatically, cut-off the water and alarm when the machine lacking water.
7. The chamber of the sterilizer is made of stainless steel.



Biological Safety Cabinets

Application Range:

Biological safety cabinets A kind of negative pressure device widely used in microbiology, biomedicine, gene recombination, animal experiments, biology products, other fields of scientific research, teaching and clinical examination. Its box design to protect the environment, people and samples, which is the basic laboratory bio-safety protection equipment. Used in laboratories with one to three level of bio-safety.

Applicable objects is in BSL 3. When air outlet is connected with outside, This equipment can also be applied for biology experiments with tracts volatile chemicals and limited radionuclides as additives.

Item	Model	MF5248	MF5249	MF5250
Clean level		ISO 5(Class 100)/ISO 4(Class 10)		
Filter Level/Filter Efficiency		@ 0.3~0.12 μ m ≥ 99.995%~99.999%		
Down Flow Air Velocity		0.25m/s~0.5m/s		
Inflow Air Velocity		≥ 0.5m/s		
Noise		≤ 67dB(A)		
Vibration Half Peak		≤ 5 μ m		
Power		AC 220V/50Hz, single phase		
Biological Protection air balance	Operator protection(Repeat for 3 times),	a. Total colony of impact mining pattern ≤ 10CFU./time b. Total colony of crack type sampling ≤ 5CFU./time		
	Sample protection(Repeat for 3 times),	Total colony ≤ 5 CFU./time		
	Cross-contamination protection(Repeat for 3 times)	Total colony ≤ 5 CFU./time		
Max. Consumption(KVA)		≤ 1500KVA(with spare socket)		
Weight(KG)		150	200	250
Work room dimension(W*D*H)		100x57x63.5	130x57x63.5	160x57x63.5
Outer Size(CM)		120x85.5x235	150x85.5x235	180x79.5x235
Fluorescent tube Size & Quantity		30W × ②	40W × ②	40W × ②
Luminance		20W × ①	30W × ①	40W × ①
Diameter of air outlet		Φ 200	Φ 250	
Wind Direction		From the top		

※The parameters are tested under zero load operation with the room temperature 20° C and the ambient humidity 50% RH.
 ※Not for long time cold storage.



MF5251 Cooler Box

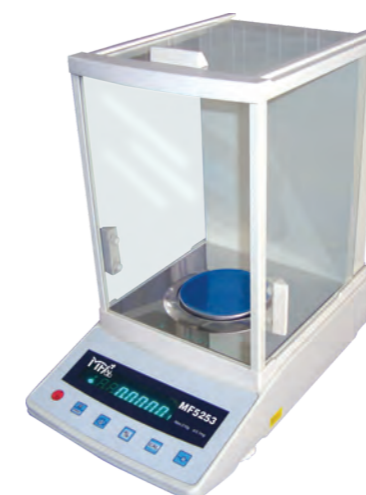
Dimensions	Outer dimensions of box	340x23x275mm
	Inner dimensions of box	235x145x170mm
Capacity	Max space	6L
	Effective space	5.8L
Material of box		PP
Arrange of gel ice boxes (0.4L)		6

MF5252 Micro Balance

3 Weight measuring units G/OZ/OZT available.
 Simple counting function
 3 backlight modes available
 Auto. Shut-off function
 Optional RS-232C interface & draft shield
 Optional Wire remote display(Signal output through RS-232 port)
 Dimensions: 23.5(L)x18(W)x7.5(H)cm
 Pan Size: 11.6cm(round)/12.5(L) x 14.5(W)cm(Square)
 Power supplies: Rechargeable, battery(6V/1.3Ah)
 or DC9V/150mA, ac/dc power adaptor



MF5252A 300g/0.01g Round pan	MF5252B 600g/0.01g Round pan
---	---



MF5253 (0.1mg) Micro Balance

Micro Balance
 Malfunction self-check
 Simple counting
 Weight measuring units convertible(g & ct)
 Percentage weighing
 Standard RS-232C interface
 Max. Capacities 120g
 Pan size: 90mm
 Stable time: within 5 seconds
 Net Weight: approx. 7kg



MF5301

OUTFIT:
 Total Magnification: 40X - 1600X
 Eyepieces: WF10X WF16X
 Objectives: 4X, 10X, 40XS, 100XS(Oil)
 Eyepieces Tube: Monocular 45° Inclined tube rotatable 360°
 Illumination: 6V/20W Halogen Lamp Adjustment
 Coarse Adjustment Range: Coarse and Fine 30mm
 Working Stage: Double Layer Mechanical Stage Size 130mm x 140mm
 moving Range 75mm x 45mm
 Condenser: NA 1.25 abbe Condenser with iris diaphragm, Filter



MF5302

OUTFIT:
 Total Magnification: 40X - 1600X
 Eyepieces: WF10X WF16X
 Objectives: 4X, 10X, 40XS, 100XS(Oil)
 Eyepieces Tube: Binocular 45° Inclined Tube Rotatable 360°
 Illumination: 6V/20W Halogen Lamp Adjustment
 Coarse Adjustable Range: Coarse And Fine 30mm
 Working Stage: Double Layer Mechanical Stage Size 130mm x 140mm
 Moving Range 75mm x 45mm
 Condenser: NA 1.25abbe Condenser With iris Diaphragm, Filter



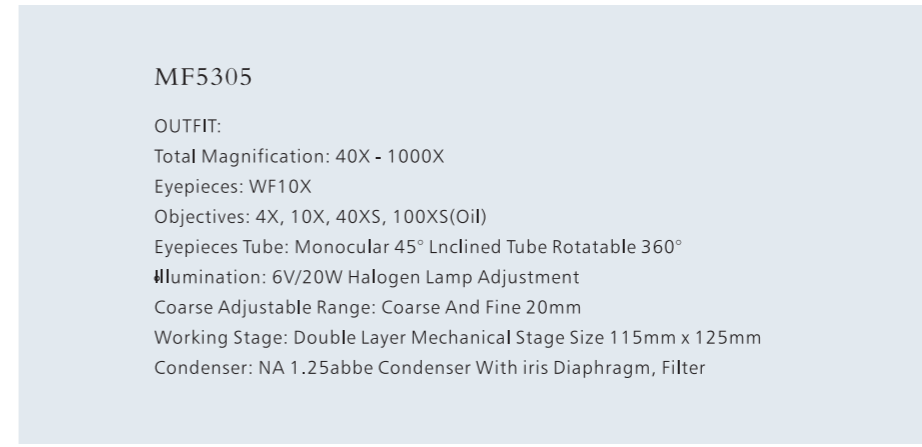
MF5303

OUTFIT:
 Total Magnification: 40X - 1600X
 Eyepieces: WF10X WF16X
 Objectives: 4X, 10X, 40XS, 100XS(Oil)
 Eyepieces Tube: Trinocular 45° Inclined Tube Rotatable 360°
 Illumination: 6V/20W Halogen Lamp Adjustment
 Coarse Adjustable Range: Coarse And Fine 30mm
 Working Stage: Double Layer Mechanical Stage Size 130mm x 140mm
 Moving Range 75mm x 45mm
 Condenser: NA 1.25abbe Condenser With iris Diaphragm, Filter



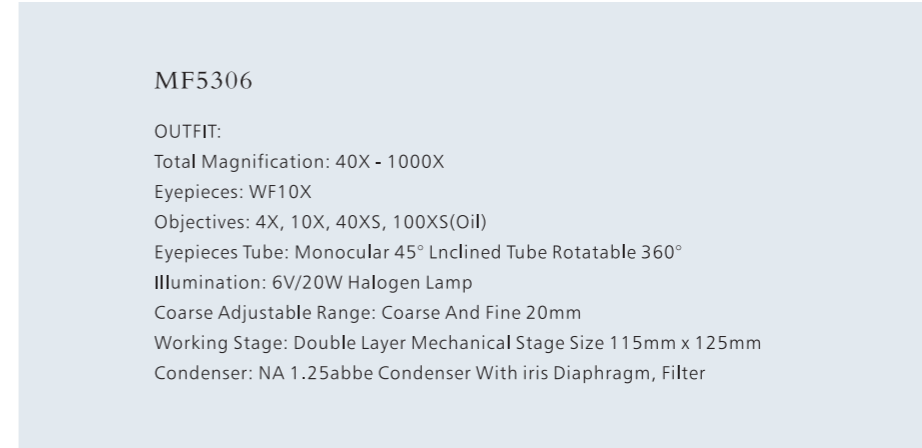
MF5304

OUTFIT:
 Total Magnification: 40X - 1600X
 Eyepieces: WF10X WF16X
 Objectives: 4X, 10X, 40XS, 100XS(Oil)
 Eyepieces Tube: Hinge Binocular 45° Inclined Tube Rotatable 360°
 Illumination: 6V/20W Halogen Lamp Adjustment
 Coarse Adjustable Range: Coarse And Fine 30mm
 Working Stage: Double Layer Mechanical Stage Size 130mm x 140mm
 Moving Range 75mm x 45mm
 Condenser: NA 1.25abbe Condenser With iris Diaphragm, Filter



MF5305

OUTFIT:
 Total Magnification: 40X - 1000X
 Eyepieces: WF10X
 Objectives: 4X, 10X, 40XS, 100XS(Oil)
 Eyepieces Tube: Monocular 45° Inclined Tube Rotatable 360°
 Illumination: 6V/20W Halogen Lamp Adjustment
 Coarse Adjustable Range: Coarse And Fine 20mm
 Working Stage: Double Layer Mechanical Stage Size 115mm x 125mm
 Condenser: NA 1.25abbe Condenser With iris Diaphragm, Filter



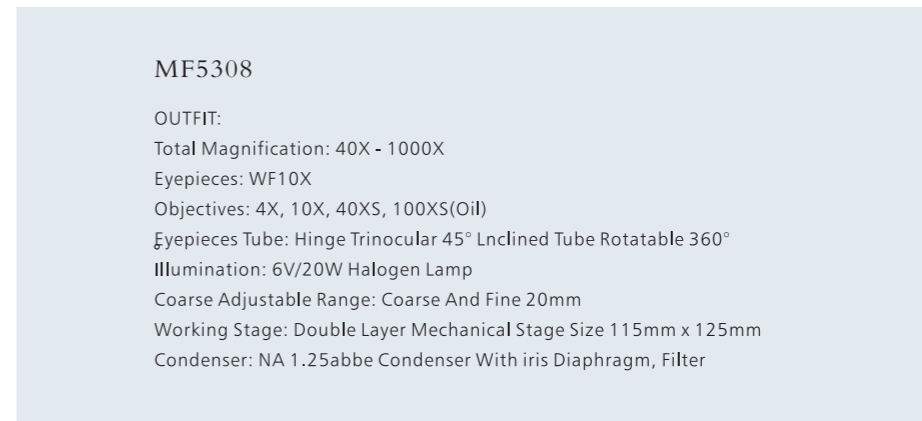
MF5306

OUTFIT:
 Total Magnification: 40X - 1000X
 Eyepieces: WF10X
 Objectives: 4X, 10X, 40XS, 100XS(Oil)
 Eyepieces Tube: Monocular 45° Inclined Tube Rotatable 360°
 Illumination: 6V/20W Halogen Lamp
 Coarse Adjustable Range: Coarse And Fine 20mm
 Working Stage: Double Layer Mechanical Stage Size 115mm x 125mm
 Condenser: NA 1.25abbe Condenser With iris Diaphragm, Filter



MF5307

OUTFIT:
 Total Magnification: 40X - 1000X
 Eyepieces: WF10X
 Objectives: 4X, 10X, 40XS, 100XS(Oil)
 Eyepieces Tube: Hinge Binocular 45° Inclined Tube Rotatable 360°
 Illumination: 6V/20W Halogen Lamp
 Coarse Adjustable Range: Coarse And Fine 20mm
 Working Stage: Double Layer Mechanical Stage Size 115mm x 125mm
 Condenser: NA 1.25abbe Condenser With iris Diaphragm, Filter



MF5308

OUTFIT:
 Total Magnification: 40X - 1000X
 Eyepieces: WF10X
 Objectives: 4X, 10X, 40XS, 100XS(Oil)
 Eyepieces Tube: Hinge Trinocular 45° Inclined Tube Rotatable 360°
 Illumination: 6V/20W Halogen Lamp
 Coarse Adjustable Range: Coarse And Fine 20mm
 Working Stage: Double Layer Mechanical Stage Size 115mm x 125mm
 Condenser: NA 1.25abbe Condenser With iris Diaphragm, Filter





MF5309

OUTFIT:
 LED Display monitor
 Camera: 2.0MP COMS Chip, Resolution 1600x1200
 Display monitor: 3.6" TFT in focus display Resolution: 960 x 240
 Memory: 32MB USB Line: USB2.0 MINI Exterior Memory: SD Card Slot
 Digital Focal Variation: 8X Power: DC-5V, 1A
Microscope
 Total Magnification: 40X - 400X Eyepieces: WF10X LED Display monitor
 Objectives: 4X, 10X, 40XS Eyepieces Tube: Monocular 45° Lnclined Tube Rotatable 360°
 Lighting System: Top and Bottom Light, LED Electrical Illumination
 Work Distance: 27mm Coarse movement distance: 13mm
 Work area: 90mm x 90mm with a mobile foot Condenser: 0.65 condenser, pulling plate light bar



MF5310

OUTFIT:
 Viewing Head: Binocular Head, Inclined at 45°, 360°rotatable
 Eyepieces: SWF 10X/20
 Objectives: 2X, 4X
 Working Distance: 80mm
Illumination: incident illumination 12V/10W OR 12V/15W
 Optional Parts: Fluorescent ring lamp, 1.3 mega pixels electronic eyepiece
 Eyepiece: SWF15X/15 SWF20X/11
 LED Illumination



MF5311

OUTFIT:
 Total Magnification: 100X - 1000X
 Eyepieces: WF10X
 Objectives: 10X, 40XS, 100XS(Oil)
 Eyepieces Tube: Monocular 45° Lnclined Tube Rotatable 360°
Illumination: 6V/20W 12V/20W Halogen Lamp
 Coarse Adjustable Range: Coarse And Fine 20mm
 Working Stage: Double Layer Mechanical Stage Size 115mm x 125mm
 Condenser: Movable Specimen Holder, NA 1.25abbe Condenser With iris Diaphragm, Filter



MF5312

OUTFIT:
 Total Magnification: 40X - 400X
 Eyepieces: WF10X
 Objectives: 4X, 10XS, 40XS
 Eyepieces Tube: Monocular Inclined Tube 45° Lnclined Tube Rotatable 360°
Illumination: LED Electrical illumination
 Coarse Adjustable Range: 15mm
 Working Stage: 90mm x 90mm
 Condenser: NA 0.65 Condenser, Disc Diaphragm
 Optional: WF16X 2X Magnification eyepieces

MF5313

Standard Outfit:
 Viewing Head: 1.3mega pixels CMOS digital monocular head
 Eyepiece: WF10X/18mm
 Objective: achromatic objective: 4X, 10X, 40X(S), 100X(S)oil
 Condenser: NA 1.25 abbe Condenser With iris Diaphragm & Filter
 Focusing: Coaxial coarse & fine focusing adjustment with rack and pinion mechanism, fine focusing scale value 0.002mm.
 Collector: High brightness light collector
 Light Source: Halogen bulb 6V/20W, AC 85V-230V, adjustable brightness



MF5314

Standard Outfit:
 Viewing Head: 1.3mega pixels CMOS digital compensation free binocular head, inclined at 30°
 Interpupillary distance: 55mm-75mm
 Eyepiece: WF10X/18mm
 Objective: achromatic objective: 4X, 10X, 40X(S), 100X(S)oil
 Condenser: NA 1.25 abbe Condenser With iris Diaphragm & Filter
 Focusing: Coaxial coarse & fine focusing adjustment with rack and pinion mechanism, fine focusing scale value 0.002mm.
 Collector: High brightness light collector
 Light Source: Halogen bulb 6V/20W, AC 85V-230V, adjustable brightness



MF5315

Standard Outfit:
 Viewing Head: 1.3mega pixels CMOS digital compensation free binocular head, inclined at 30°
 Interpupillary distance: 55mm-75mm
 Eyepiece: WF10X/18mm
 Objective: achromatic objective: 4X, 10X, 40X(S), 100X(S)oil
 Condenser: NA 1.25 abbe Condenser With iris Diaphragm & Filter
 Focusing: Coaxial coarse & fine focusing adjustment with rack and pinion mechanism, fine focusing scale value 0.002mm.
 Collector: High brightness light collector
 Light Source: Halogen bulb 6V/20W, AC 85V-230V, adjustable brightness
 Optional Parts: 0.3 mega pixels CMOS digital compensation free binocular head, inclined at 30°



MF5316

Standard Outfit:
 Viewing Head: 1.3mega pixels CMOS digital compensation free binocular head, inclined at 30°
 Interpupillary distance: 55mm-75mm
 Eyepiece: WF10X/18mm
 Objective: achromatic objective: 4X, 10X, 40X(S), 100X(S)oil
 Condenser: NA 1.25 abbe Condenser With iris Diaphragm & Filter
 Focusing: Coaxial coarse & fine focusing adjustment with rack and pinion mechanism, fine focusing scale value 0.002mm.
 Collector: High brightness light collector
 Light Source: Halogen bulb 6V/20W, AC 85V-230V, adjustable brightness





MF5319

Viewing Head: Trinocular head
 Interpupillary Distance: 55mm-75mm
 Eyepiece: WF10X/23mm
 Objective: Zoom range 0.63-5x, zoom ratio 1:8
 Working Distance: 110mm
 Illumination: Top illumination: Reflection 12V 20W, bottom illumination: transmission 12V 20W
 Power: 85 - 265V



MF5320

Standard Outfit:
 Viewing Head: Compensation free binocular head, inclined at 30°
 Interpupillary distance: 55mm-75mm
 Eyepiece: WF10X/18mm
 Objective: achromatic objective: 4X, 10X, 40X(S), 100X(S)oil
 Stage: Double layers mechanical stage 180mm x 150mm, move range 75mx50mm
 Condenser: NA 1.25 abbe Condenser With iris Diaphragm & Filter
 Focusing: Coaxial coarse & fine focusing adjustment with rack and pinion mechanism, fine focusing scale value 0.002mm.
 Collector: High brightness light collector
 Light Source: Halogen bulb 6V/20W, AC 85V-230V, adjustable brightness



MF5321

Standard Outfit:
 Viewing Head: Compensation free binocular head, inclined at 30°
 Interpupillary distance: 55mm-75mm
 Eyepiece: WF10X/22mm
 Objective: Infinity objective: 4X, 10X, 40X(S), 100X(S)oil
 Stage: Double layers mechanical stage 180mm x 150mm, move range 75mx50mm
 Condenser: NA 1.25 abbe Condenser With iris Diaphragm & Filter
 Focusing: Coaxial coarse & fine focusing adjustment with rack and pinion mechanism, fine focusing scale value 0.002mm.
 Collector: High brightness light collector
 Light Source: Halogen bulb 6V/20W, AC 85V-230V, adjustable brightness



MF5324

Viewing Head: Compensation free trinocular head, inclined at 30°
 Eyepiece: 10X gridding eyepiece, 10X with reticule WF10X/22mm
 Objective: Infinity plan-objective: 4X, 10X, 40X(S), 100X(S)oil
 Stage: Stage Dia.: φ160mm, rotatable: 360°
 Condenser: Swing Type NA 1.25 abbe Condenser With iris Diaphragm & Filter
 Focusing: Coaxial coarse & fine focusing adjustment with rack and pinion mechanism, fine focusing scale value 0.002mm.
 Collector: High brightness light collector
 Light Source: Halogen bulb 6V/20W, AC 85V-230V, adjustable brightness

MF5328

Outfit:
 Total Magnification: 40X-640X
 Eyepieces: 10X, 16X
 Objectives: 4X, 10X, 40SX5
 Eyepieces Tue: Monocular Vertical tube
 Illumination: Concave-plan reflector. Dia.: φ50mm
 Coarse Adjustment Range: 50mm
 Fine Adjustment Range: 1.8mm - 2.2mm
 Working Stage: 110mmx120mm
 Optional: Electrical Illumination(110V/20W, 220V/20W Optional)



MF5329

Outfit
 Total Magnification : 500X - 100X
 Eyepieces: 5X 10X
 Objectives: 10X 40Xs 100Xs(oil)
 Eyepieces Tube: Monocular Vertical Tube
 Illumination: Concave-Plan Reflector. Dia.□50mm
 Fine Adjustable Range: 1.8mm-2.2mm
 Working Stage: 120mm X 120mm
 Condenser: Movable Specimen Holder, NA1.25abbe Condenser with iris diaphragm, filter
 Optional: Electric Illumination(110V/20W, 220V/20W Optional)



MF5330

Outfit:
 Total Magnification: 10X-40X
 Magnification Eyepieces: WF10X
 Objectives: 1X - 4X
 Eyepieces Tue: Binocular 45°Inclined Tube, CCD Adaptor ting, Rotatable 360°
 Light System: Top and bottom light, 0.75W LED electrical illumination, adjustable light
 Working Stage: φ95mm One-sided glass or Black/White
 Optional: WF20X eyepiece, 0.5x/2x magnification eyepieces



MF5331

OUTFIT:
 Total Magnification: 10X - 40X
 Eyepieces: WF10X
 Objectives: 1X, 2X, 3X, 4X
 Assistant Objectives: FZ0.5, FZ2.0
 Eyepieces Tube: Inclined Tube 60°Inclined tube with: 54mm - 76mm
 Sight Range: 22mm
 Illumination: Transmission light or inclined illumination light, Annular falls the radiation light
 Coarse Adjustment Range: 110mm
 Working Distance: 160mm
 Working Stage: φ95mm One-sided glass or Black/White





MF5332

It's made up of the biological microscope and Epi-fluorescence device.
Epi-fluorescence widely used in biology, medicine, immunology, oncology, genetics, materials science and other fields.

Specification:
Viewing head: Compensation free binocular head inclined at 30°(50mm - 74mm)
Eyepiece: WF10X/22mm
Infinite apochromatic fluorescent objectives: 4X/N.A. 0.15, 10X/N.A. 0.35, 20X/N.A.0.6, 40X(S)/N.A. 0.75,
Nosepiece: Sextuple Nosepiece
Stage: Double layer mechanical stage, Stage Size: 180mmx160mm, Moving Range: 80mmx50mm
Condenser: N.A.1.25 Abbe condenser with iris diaphragm and filters
Focusing: Coaxial coarse & fine focusing adjustment with rack and pinion mechanism.
Fine focusing scale value 0.002mm
Light Source: Transmission Illumination: Halogen Bulb 12V/30W, Brightness Adjustable
Epi-Fluorescent Illumination: 220V(110V), Ultra-high pressure Mercury Lamp100W/DC.
Digital display mercury lamp constant power
Fluorescent Box: G, B, BV, V, U Wave Band

MF5335

Specification:
Viewing Head: Compensation Free Binocular Head, Indined at 45°(50mm-75mm)
Eyepiece: WF10×/20mm
Objective: Long working distance plan-objective:LWDPL4X/0.1W.D.25mm, LWDPL10Z/0.25W.D.11mm,LWDPL20X/0.4W.D.8mm, LWDPL40X/0.6W.D.3.8mm
Long working distance phase contrast objective:LWDPL20X
Stage: Double layer mechanical stage, Stage Size: 242mmx172mm, Center ring stage:110mm, Moving Range: 75mmx50mm
Condenser: N.A.1.25 Abbe condenser with iris diaphragm and filters
Focusing: Coaxial coarse & fine focusing adjustment with rack and pinion mechanism.
Fine focusing scale value 0.002mm
Condenser: N.A.0.3Abbe condenser W.D.75mm
Phase Contrast sliding plate: Center of phase contrast ring plate adjustable
Centering telescope:Centering telescope
Filter: Blue, green, yellow and glass
Light Source: Halogen bulb 12V/50W,AC85V-230 ,Brightness adjustable



MF5333

Specification:
Viewing head: Compensation Free Trinocular Head, Indined at 30° (50mm-75mm) ,
Eyepiece: WF10X/25mm, WF10X/20mm, crosshair with reticule 0.1mm
objectives: Long working distance bright and dark field
Infinite Plan objectives: 5x/0.1B.D/W.D.29.4mm, 10x/0.25B.D/W.D.16mm, 20x/0.40B.D/W.D.10.6mm, 40x/0.60B.D/W.D.5.4mm,
Nosepiece: Quintuple Nosepiece with DIC Jack
Stage: Double layer mechanical stage, Stage Size: 190mmx140mm, Moving Range: 50mmx40mm
Filter: Moving Range: 50mm×40mm,
Focusing: Coaxial coarse & fine focusing adjustment with rack and pinion mechanism.
Fine focusing scale value 0.002mm
Light Source: With aperture iris diaphragm and field iris diaphragm,
Halogen bulb 12V/50W,AC85V-230 ,Brightness adjustable
Polarizing Device: Analyzer rotatable360°, Polarizer & Analyzer can be moved in/out of the optical path
Checking Tool: 0.01mm Micrometer

MF5336

Specification:
Eyepiece: PL10×/18mm
Objective: High quality Achromatic Objective: 4X, 10X, 40X(S), 100X(S)oil
Head: Gemel Binocular Head,30°inclined
Nosepiece: Reversed Quadruple Nosepiece
Condenser: N.A.1.25 Abbe condenser condenser with iris diaphragm and filters holder
Focusing: Low position coaxial coarse and fine adjustment, focus range: 28mm, precision:0.002mm
Stage: 140x132mm mechanical stage, moving range:76x50mm
Illuminator: Adopt variable voltage(90V-240V),60V/20W halogen bulb, with adjustable brightness
Collector System: Critical illumination system



MF5334

This series microscope is designed for several people to observe one specimen together at the same time. It has infinity imaging system, high light illumination system and provide sharp & clear image. Particularly, it is suitable for discussion application in Clinic, research and teaching.

Specification:
Viewing Head: Compensation Free Binocular Head Inclined at 30°3-Teaching binocular head(55mm-75mm),
Eyepiece: WF10×/22mm
Objective: Infinity plan objective: 4X, 10X, 40X(S), 100X(S)Oil
Stage: Double layer mechanical stage, Stage Size: 180mmx150mm, Moving Range: 75mmx50mm
Condenser: N.A.1.25 Abbe condenser with iris diaphragm and filters
Focusing: Coaxial coarse & fine focusing adjustment. Fine focusing scale value 0.002mm
Light Source: Halogen bulb 12V/50W,AC85V-230 , Adjustable Brightness
Illumination: High-light Kohler illumination

MF5337

Optical system: Infinity color corrected optical system
Eyepiece: PL10×/10T, FN10mm with adjustable diopter
Objective: OIP Infinity Plan Achromatic Objectives
Viewing Head: 30°inclined Gemel Binocular Head
Nosepiece: Reversed Quadruple Nosepiece
Stage: 140x132mm mechanical stage, moving range:76x50mm
Condenser: N.A.1.25 Koehler illuminator condenser
Focusing: Coaxial focus system with tension adjustable, coarse:25mm per rotation , with upper limit and tightness adjustment
Illuminator: 100V-240Vflucturate of voltage, Philips 6V/20W halogen bulb with continuous intensity control

